

LIVERMORES

THE ESTATE AGENTS

3 Bedrooms

House - Detached

Price Guide

£500,000

Located in

Dartford



www.livermores.co.uk



6 Marcus Road

Dartford Kent DA1 3JX



WEST DARTFORD..... Guide Price £500,000 to £525,000 Located in a sought after road within a mile walk of DARTFORD GRAMMAR SCHOOLS is this extended detached bungalow offered to the market with NO ONWARD CHAIN. Although the property does require some updating the property would make someone a really lovely home. The property comprises 3 bedrooms, 2 a really good double rooms and an excellent size single bedroom, large through reception of 25ft, extended kitchen and bathroom. Externally there is off road parking, a rear garden of approximately 70ft and access to a garage. VIEWING HIGHLY RECOMMENDED

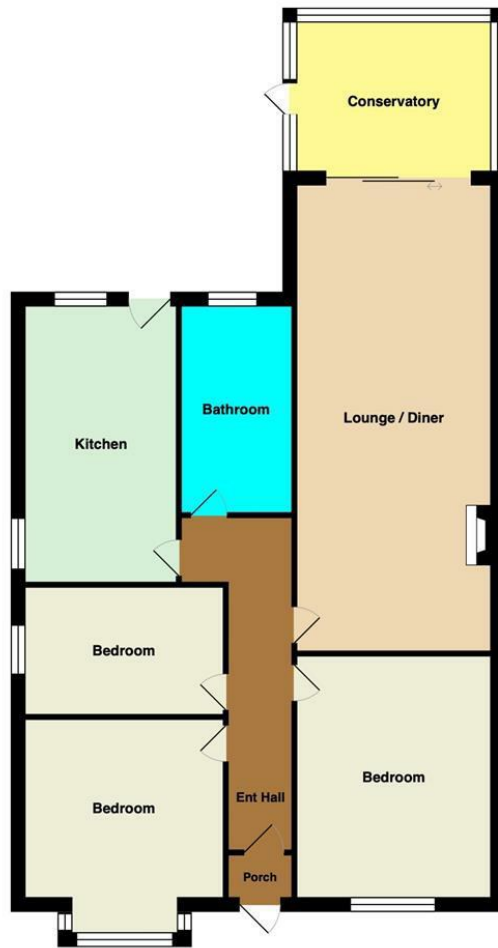
6 Marcus Road

£500,000 Freehold



- GUIDE PRICE £500,000 TO £525,000
- DARTFORD GRAMMAR SCHOOL CATCHMENT
- 3 GOOD SIZE BEDROOMS
- EXTENDED KITCHEN
- SIMILAR PROPERTIES REQUIRED

- WEST DARTFORD
- DETACHED BUNGALOW
- 25FT THROUGH RECEPTION
- OFF ROAD PARKING
- EPC RATING 'E' COUNCIL TAX BAND 'E'



Council Tax Band E

Local Authority Dartford

Agents Note: Whilst every care has been taken to prepare these particulars, they are for guidance purposes only. All measurements are approximate and are for general guidance purposes only and whilst every care has been taken to ensure their accuracy, they should not be relied upon and potential buyers/tenants are advised to recheck the measurements.

Energy Efficiency Rating		Current	Potential
Very energy efficient - lower running costs			
(92 plus) A			
(81-91) B			84
(69-80) C			
(55-68) D		54	
(39-54) E			
(21-38) F			
(1-20) G			
Not energy efficient - higher running costs			
England & Wales		EU Directive 2002/91/EC	

1 Hythe Street

Dartford

Kent

DA1 1BE

LIVERMORES
THE ESTATE AGENTS

dartford@livermores.co.uk

01322 228090

www.company.co.uk