



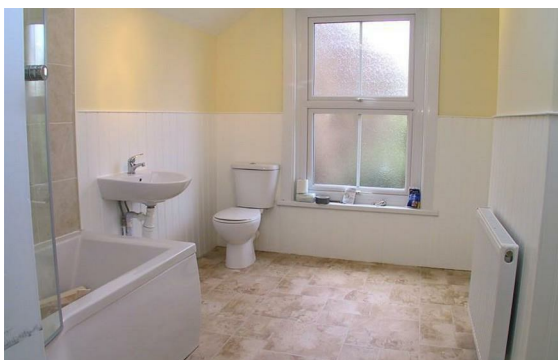
2 Bedrooms
House - Semi-Detached
Located in Crayford
£1,450 PCM



lettings@livermores.co.uk

www.livermores.co.uk

01322 311427



LIVERMORES
THE ESTATE AGENTS

1 Hythe Street
Dartford
Kent
DA1 1BE

01322 311427

lettings@livermores.co.uk

www.livermores.co.uk

A cottage style period two bedroom end of terrace house located close to the town centre. Features include lounge, dining area, kitchen, two bedrooms, large family bathroom, gardens and parking. Offered with white goods. EPC rating D. Council tax band B. Available mid May 2024. Viewing recommended. SIMILAR PROPERTIES REQUIRED DEPOSIT £1673.07.

Energy Efficiency Rating:

Agents Note: Whilst every care has been taken to prepare these particulars, they are for guidance purposes only. All measurements are approximate and are for general guidance purposes only and whilst every care has been taken to ensure their accuracy, they should not be relied upon and potential buyers/tenants are advised to recheck the measurements.