

LIVERMORES

THE ESTATE AGENTS

3 Bedrooms

Bungalow - Detached

Price Guide

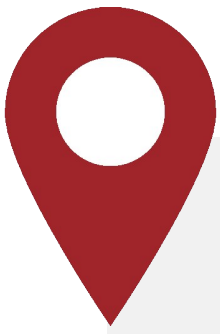
£450,000

Located in

Dartford



www.livermores.co.uk



124 New Road

Dartford Kent DA4 9AR



GUIDE PRICE £450,000 TO £475,000 * BEAUTIFULLY PRESENTED
DETACHED BUNGALOW * NO CHAIN * LOCATED IN A SEMI RURAL
SETTING IN THE VILLAGE OF SOUTH DARENTH * 3 DOUBLE
BEDROOMS * LARGE LOUNGE * FITTED KITCHEN WITH DINING AREA
* LOVELY SHOWER ROOM * MASTER BEDROOM WITH ENSUITE AND
STORAGE * OFF ROAD PARKING * WORKSHOP/STORAGE * REAR
GARDEN WITH DECKED AREA * DOUBLE GLAZING * GAS CENTRAL
HEATING * VIEWING HIGHLY RECOMMENDED



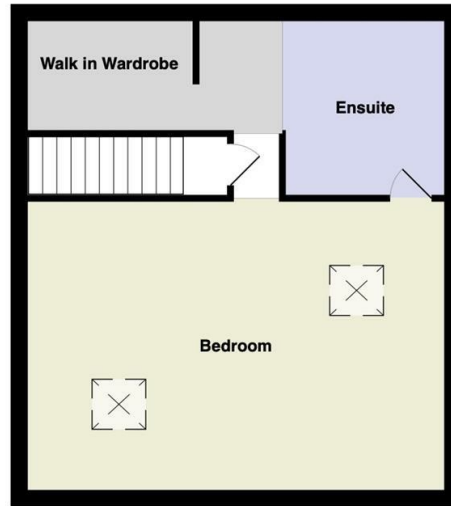
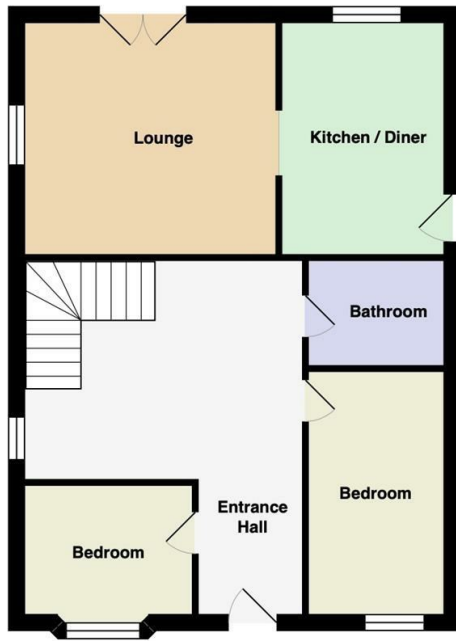
124 New Road

£450,000 Freehold



- GUIDE PRICE £450,000 TO £475,000
- CHAIN FREE!
- LARGE LOUNGE
- 3 BEDROOM DETACHED BUNGALOW
- MASTER BEDROOM WITH ENSUITE
- BEAUTIFUL VIEWS
- STUNNING GROUND FLOOR SHOWER ROOM
- SEMI RURAL LOCATION
- SIMILAR PROPERTIES REQUIRED
- EPC RATING 'E' COUNCIL TAX BAND 'D'





Council Tax Band D

Local Authority Sevenoaks

Agents Note: Whilst every care has been taken to prepare these particulars, they are for guidance purposes only. All measurements are approximate and are for general guidance purposes only and whilst every care has been taken to ensure their accuracy, they should not be relied upon and potential buyers/tenants are advised to recheck the measurements.

Energy Efficiency Rating		Current	Potential
Very energy efficient - lower running costs			
(92 plus) A			
(81-91) B			78
(69-80) C			
(55-68) D		54	
(39-54) E			
(21-38) F			
(1-20) G			
Not energy efficient - higher running costs			
England & Wales		EU Directive 2002/91/EC	

1 Hythe Street

Dartford

Kent

DA1 1BE

LIVERMORES
THE ESTATE AGENTS

dartford@livermores.co.uk

01322 228090

www.livermores.co.uk