

LIVERMORES

THE ESTATE AGENTS

3 Bedrooms

House - End Terrace

Price Guide

£450,000

Located in

Kent



www.livermores.co.uk



27 Shackleton Drive

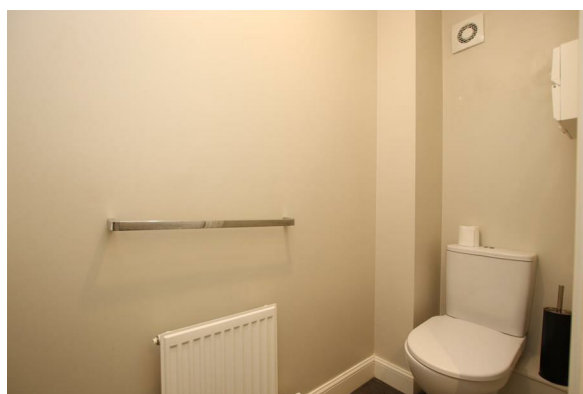
Kent DA1 5UH



GUIDE PRICE £450,000 TO £475,000 * NO CHAIN * 3 DOUBLE BEDROOM
TOWNHOUSE * SET OVER 3 FLOORS * ENSUITE TO MASTER BEDROOM
* 1ST FLOOR BATHROOM * GROUND FLOOR W/C * CONVENIENT FOR
DARTFORD STATION * CENTRAL DARTFORD LOCATION * OFF ROAD
PARKING * VIEWING RECOMMENDED*

27 Shackleton Drive

£450,000 Freehold




- GUIDE PRICE £450,000 TO £475,000
- 3 DOUBLE BEDROOMS
- 1ST FLOOR BATHROOM
- GROUND FLOOR W/C
- SIMILAR PROPERTIES REQUIRED
- CHAIN FREE!
- SET OVER 3 FLOORS
- ENSUITE TO MASTER BEDROOM
- DARTFORD STATION WITHIN A THIRD OF A MILE
- EPC RATING 'B' COUNCIL TAX BAND 'E'

Council Tax Band E

Local Authority Dartford Borough Council

Agents Note: Whilst every care has been taken to prepare these particulars, they are for guidance purposes only. All measurements are approximate and are for general guidance purposes only and whilst every care has been taken to ensure their accuracy, they should not be relied upon and potential buyers/tenants are advised to recheck the measurements.

Energy Efficiency Rating		Current	Potential
Very energy efficient - lower running costs			
(92 plus) A			95
(81-91) B		85	
(69-80) C			
(55-68) D			
(39-54) E			
(21-38) F			
(1-20) G			
Not energy efficient - higher running costs			
England & Wales		EU Directive 2002/91/EC	

1 Hythe Street

Dartford

Kent

DA1 1BE

LIVERMORES
THE ESTATE AGENTS

dartford@livermores.co.uk

01322 228090

www.company.co.uk