

LIVERMORES





Tenure

Our vendor has informed us that this is a Leasehold property.
 Lease Term: Commencing on 25 December 1974 and expiring on 24 March 2140
 Service Charge: £391 half yearly (1 Oct 2025 to 31 March 2026)
 Ground Rent: £250 per year (last requested on 25/03/2025)

Additional Information

Parking: Residents Parking (Permit Required)
 Heating: Gas Boiler
 Electricity Supply: Mains
 Water Supply: Mains
 Drainage: Mains
 Council: Bexley

Broadband: Standard, Superfast and Ultrafast broadband are available. Actual service availability at the property may be different. Visit the Ofcom website for further information.

Mobile Signal/Coverage: You are likely to have good coverage from most networks. Visit the Ofcom website for further information.

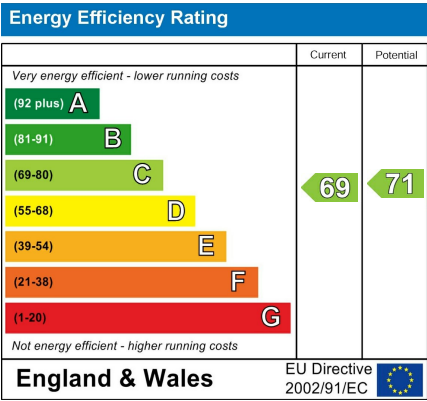
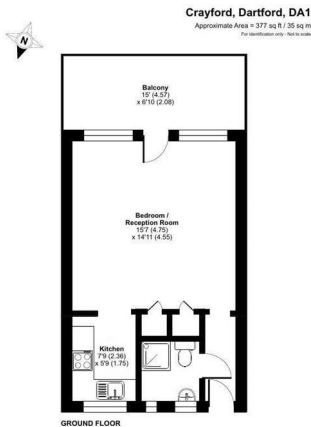
Internal Measurements: Please see the floor plan.

Disclaimer

These particulars should be regarded as a general guide only and therefore should not be relied upon as statements of fact. They do not form part of any contract or offer. All photographs, measurements and distances referred to are given as a guide only and therefore should not be relied upon for any purpose.

If a floorplan is shown, this will not be to scale, and the accuracy is not guaranteed. Main services and appliances have not been tested by the agents and no warranty is given by them as to working order or condition.

Reference to tenure, leases, service charge, ground rent, estate management charges, fixtures, fittings, condition, extensions, planning permission, building consents/regulations, building works, conversions, or any other statement contained in these particulars should not be relied upon and must be verified by a legal representative or solicitor before any contract is entered into. If clarification or further information is required, please contact us before making an appointment to view, especially if you are travelling some distance.



Livermores The Estate Agents
 126 Crayford Road, Crayford, Kent, DA1 4ES
 01322 550777
 crayford@livermores.co.uk

Agents Note: Whilst every care has been taken to prepare these particulars, they are for guidance purposes only. All measurements are approximate are for general guidance purposes only and whilst every care has been taken to ensure their accuracy, they should not be relied upon and potential buyers/tenants are advised to recheck the measurements.