





Additional Information
Tenure: Freehold
Parking: Two off-street parking spaces
Heating: Gas Boiler
Electricity Supply: Mains
Water Supply: Mains
Drainage: Mains
Council: Bexley

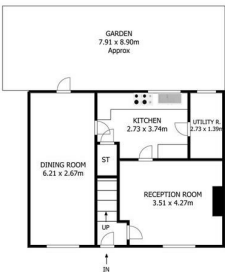
Broadband: Standard and Ultrafast broadband is available. Actual service availability at the property may be different. Visit the Ofcom website for further information.

Mobile Signal/Coverage: You are likely to have good coverage from most networks. Visit the Ofcom website for further information.

Internal Measurements: Please see the floor plan

Disclaimer

These particulars form no part of any contract and are issued as a general guide only. Main services and appliances have not been tested by the agents and no warranty is given by them as to working order or condition. All measurements are approximate and have been taken at the widest points unless otherwise stated. The accuracy of any floor plans published cannot be confirmed. Reference to tenure, building works, conversions, extensions, planning permission, building consents/regulations, service charges, ground rent, leases, fixtures, fittings and any statement contained in these particulars should not be relied upon and must be verified by a legal representative or solicitor before any contract is entered into.



Ground Floor
Dale Road, Crayford, DA1 3PQ



First Floor

Energy Efficiency Rating		
	Current	Potential
Very energy efficient - lower running costs		
(92 plus) A		
(81-91) B		
(69-80) C		
(55-68) D		
(39-54) E		
(21-38) F		
(1-20) G		
Not energy efficient - higher running costs		
	60	77
England & Wales		EU Directive 2002/91/EC

Livermores The Estate Agents
126 Crayford Road, Crayford, Kent, DA1 4ES
01322 550777
crayford@livermores.co.uk

Agents Note: Whilst every care has been taken to prepare these particulars, they are for guidance purposes only. All measurements are approximate are for general guidance purposes only and whilst every care has been taken to ensure their accuracy, they should not be relied upon and potential buyers/tenants are advised to recheck the measurements.