



LIVERMORES
THE ESTATE AGENTS

3 Bedrooms
House - End Terrace
Located in Crayford

£325,000



crayford@livermores.co.uk

www.company.co.uk

01322 550777



129 Green Walk Crayford Kent DA1 4JU



GUIDE PRICE £325,000-£350,000 Located on Green Walk in Crayford, this three-bedroom end terrace house offers a practical layout across 775 square feet. The ground floor features a separate living room, leading to a kitchen at the rear. The bathroom is also located on the ground floor and includes a bath with a shower.

Upstairs, there are three well-sized bedrooms, each benefiting from good natural light. Outside, the south-facing garden offers a decked seating area. There is also off-street parking at the front of the property.

The house is conveniently located near local schools, shops, and Crayford train station, which offers easy access to London. The M25 and A2 are also nearby for those travelling by car.



129 Green Walk

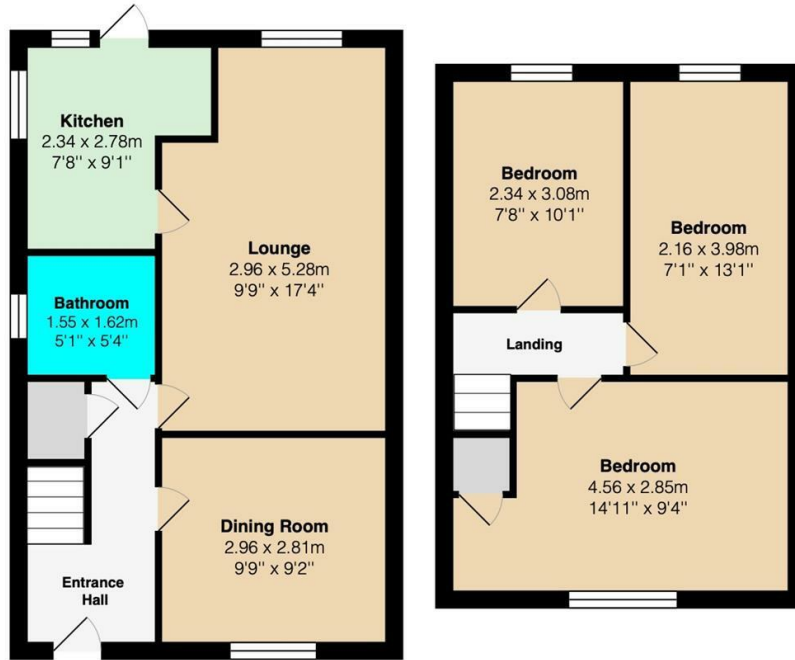
£325,000 Freehold

- GUIDE PRICE £325,000 - £350,000
- GROUND-FLOOR FAMILY BATHROOM
- SOUTH-FACING GARDEN WITH DECKED SEATING AREA
- EASY ACCESS TO CRAYFORD STATION AND TRANSPORT LINKS
- SIMILAR PROPERTIES REQUIRED

- OFF-STREET PARKING
- 775 SQUARE FEET OF LIVING SPACE
- IDEAL FOR FAMILIES OR FIRST-TIME BUYERS
- CLOSE TO LOCAL SCHOOLS, SHOPS, AND PARKS
- COUNCIL TAX BAND C - EPC RATING D







LIVERMORES
THE ESTATE AGENTS

126 Crayford Road
Crayford
Kent
DA1 4ES

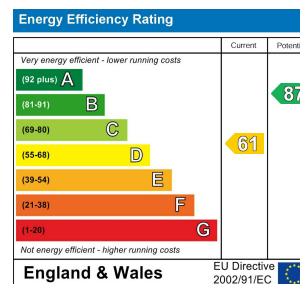
01322 550777

crayford@livermores.co.uk

Council Tax Band: C

Local Authority: Bexley

Agents Note: Whilst every care has been taken to prepare these particulars, they are for guidance purposes only. All measurements are approximate and are for general guidance purposes only and whilst every care has been taken to ensure their accuracy, they should not be relied upon and potential buyers/tenants are advised to recheck the measurements.



www.livermores.co.uk