



**LIVERMORES**  
THE ESTATE AGENTS

3 Bedrooms  
House - End Terrace  
Located in Crayford

£475,000



[crayford@livermores.co.uk](mailto:crayford@livermores.co.uk)

[www.livermores.co.uk](http://www.livermores.co.uk)

01322 550777





# 89 Bascombe Grove Braeburn Park

## Crayford Kent DA1 3RH



Discover this lovely end-of-terrace townhouse's perfect blend of modern convenience and suburban charm. Spanning over 1,065 sq. ft., the home features three well-sized bedrooms, including a master with en-suite shower. The open-plan kitchen and dining room are ideal for family gatherings and entertaining. Step outside to find two off-street parking spaces and a single garage for added convenience. Situated just a five-minute walk from Crayford Train Station (Zone 6), commuting is a breeze, while Crayford High Street's shops and amenities are within easy reach. A ground floor W/C adds convenience, making this home ideal for families or anyone looking for a well-located and practical living space.





# 89 Bascombe Grove

£475,000 Freehold

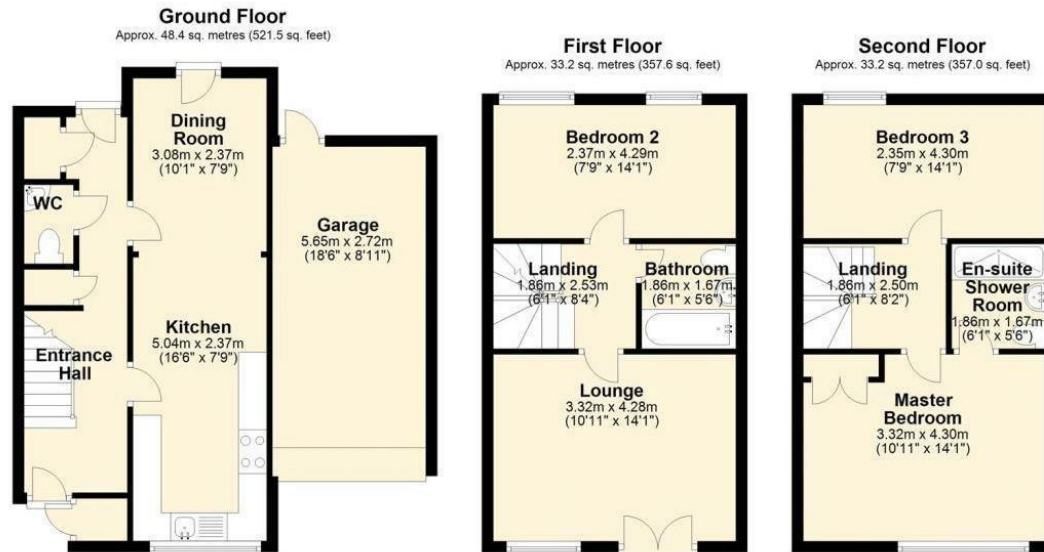
- TWO OFF-STREET PARKING SPACES
- SINGLE GARAGE
- QUIET CUL-DE-SAC
- SIDE ACCESS TO THE REAR GARDEN
- EPC RATING C

- 5 MINUTE WALK TO CRAYFORD TRAIN STATION (ZONE 6)
- SOUGHT AFTER BRAEBURN PARK DEVELOPMENT
- CLOSE TO DESIRABLE PRIMARY & SECONDARY SCHOOLS
- SIMILAR PROPERTIES REQUIRED
- COUNCIL TAX BAND D









Total area: approx. 114.8 sq. metres (1236.2 sq. feet)

**LIVERMORES**  
THE ESTATE AGENTS

126 Crayford Road  
Crayford  
Kent  
DA1 4ES

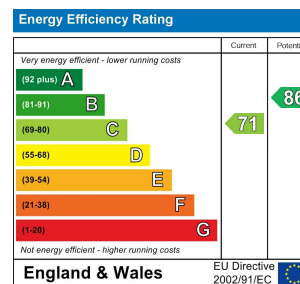
01322 550777

crayford@livermores.co.uk

**Council Tax Band: D**

**Local Authority: Bexley**

Agents Note: Whilst every care has been taken to prepare these particulars, they are for guidance purposes only. All measurements are approximate and are for general guidance purposes only and whilst every care has been taken to ensure their accuracy, they should not be relied upon and potential buyers/tenants are advised to recheck the measurements.



www.livermores.co.uk