



LIVERMORES
THE ESTATE AGENTS

3 Bedrooms
House - Semi-Detached

Located in Crayford

£400,000



crayford@livermores.co.uk

www.company.co.uk

01322 550777



98 Green Walk Crayford Kent DA1 4JL



Welcome to Green Walk, Crayford - a charming location perfect for families! This large 3-bedroom semi-detached house is a gem waiting to be discovered. With ample space for a growing family, this property boasts off-street parking for your convenience.

Situated in a prime location, you'll find great links to local amenities, schools, and easy transport options to London. Whether you're looking for a peaceful retreat or a bustling city life, this property offers the best of both worlds. Don't miss out on the opportunity to make this house your home!

Viewings are highly recommended to fully appreciate this property.



98 Green Walk

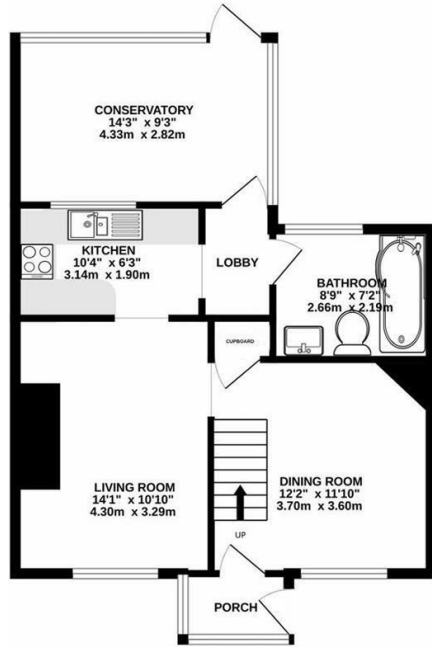
£400,000 Freehold

- LARGE THREE BED SEMI-DETACHED HOUSE
- BATHROOM AND ADDITIONAL WC
- SIDE ACCESS
- WALKING DISTANCE TO SCHOOLS, SHOPS, TRANSPORT TO LONDON
- COUNCIL TAX BAND - C
- IDEAL FOR FAMILIES
- LARGE NORTH FACING GARDEN
- OFF STREET PARKING FOR TWO CARS
- EPC - D
- SIMILAR PROPERTIES REQUIRED

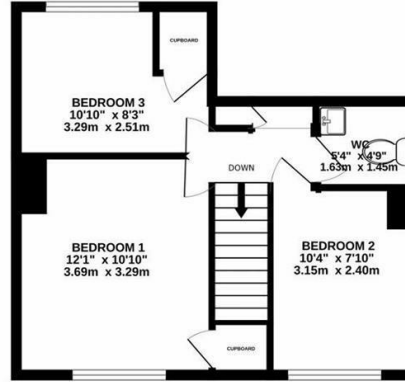




GROUND FLOOR
591 sq.ft. (54.9 sq.m.) approx.

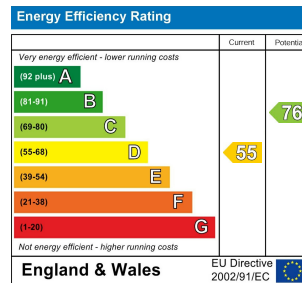


1ST FLOOR
358 sq.ft. (33.3 sq.m.) approx.



TOTAL FLOOR AREA: 949 sq.ft. (88.2 sq.m.) approx.

Whilst every attempt has been made to ensure the accuracy of the floorplan contained here, measurements of doors, windows, rooms and any other items are approximate and no responsibility is taken for any error, omission or mis-statement. This plan is for illustrative purposes only and should be used as such by any prospective purchaser. The services, systems and appliances shown have not been tested and no guarantee as to their operability or efficiency can be given.
Made with Metropix ©2023



LIVERMORES
THE ESTATE AGENTS

126 Crayford Road
Crayford
Kent
DA1 4ES

01322 550777

crayford@livermores.co.uk

www.livermores.co.uk

Council Tax Band:

Local Authority:

Agents Note: Whilst every care has been taken to prepare these particulars, they are for guidance purposes only. All measurements are approximate and are for general guidance purposes only and whilst every care has been taken to ensure their accuracy, they should not be relied upon and potential buyers/tenants are advised to recheck the measurements.