



LIVERMORES
THE ESTATE AGENTS

2 Bedrooms

Maisonette

Located in Belvedere

£250,000



crayford@livermores.co.uk

www.company.co.uk

01322 550777



Flat 2 54 Erith Road

Belvedere DA17 6HR



We are delighted to bring to the market this spacious chain free, two bedroom ground floor maisonette. In good order throughout and comprising lounge, fitted kitchen, two double bedrooms and modern shower room. For those that only require one bedroom, the second bedroom offers the option for conversion into a dining room, or office space, to suit your lifestyle needs. The communal garden is accessed from this room and whilst this area is for the use of other residents, due to its isolated position, it presents a secluded outdoor space to enjoy. The property also comes with one allocated parking bay.

Located in a quiet spot, all amenities are located nearby, including Abbey Wood station with easy access to London via the Elizabeth line. For those that like open green spaces, Frank's Park is located directly behind the property. A beautiful park and a nature conservation area of Borough importance.

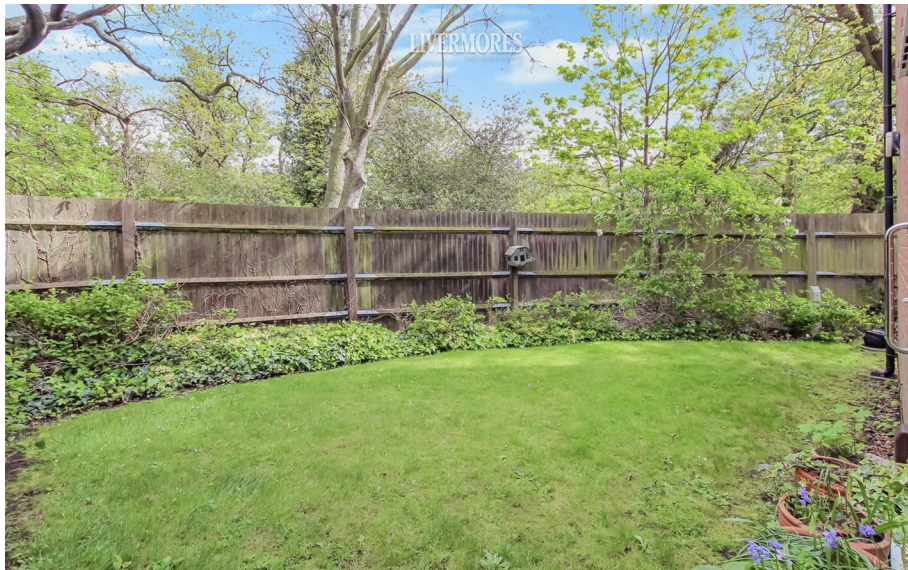
A good size, well presented property with a healthy lease, allocated parking, and an excellent location makes for a fantastic opportunity, with viewing highly recommended.

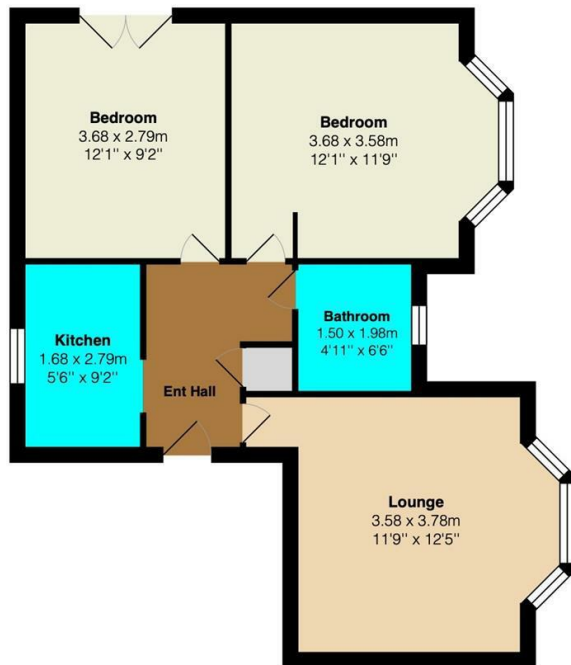


Flat 2 54 Erith Road

£250,000 Leasehold

- CHAIN FREE
- TWO DOUBLE BEDROOMS
- ALLOCATED PARKING BAY
- IDEALLY LOCATED FOR AMENITIES & ABBEY WOOD STATION OFFERING THE ELIZABETH LINE SERVICE
- COUNCIL TAX BAND C EPC RATING C
- GROUND FLOOR MAISONNETTE
- PRESENTED IN GOOD ORDER
- 107 YEARS REMAINING ON THE LEASE
- DOUBLE GLAZING AND GAS CENTRAL HEATING
- SIMILAR PROPERTIES REQUIRED





LIVERMORES
THE ESTATE AGENTS

126 Crayford Road
Crayford
Kent
DA1 4ES

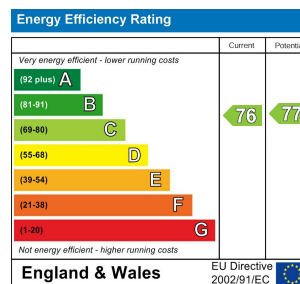
01322 550777

crayford@livermores.co.uk

Council Tax Band: C

Local Authority: Bexley

Agents Note: Whilst every care has been taken to prepare these particulars, they are for guidance purposes only. All measurements are approximate and are for general guidance purposes only and whilst every care has been taken to ensure their accuracy, they should not be relied upon and potential buyers/tenants are advised to recheck the measurements.



www.livermores.co.uk