



**LIVERMORES**  
THE ESTATE AGENTS

5 Bedrooms  
House - Semi-Detached  
Located in Bexleyheath

£750,000



[crayford@livermores.co.uk](mailto:crayford@livermores.co.uk)

[www.company.co.uk](http://www.company.co.uk)

01322 550777



## 83 Holmsdale Grove Bexleyheath Kent DA7 6PA



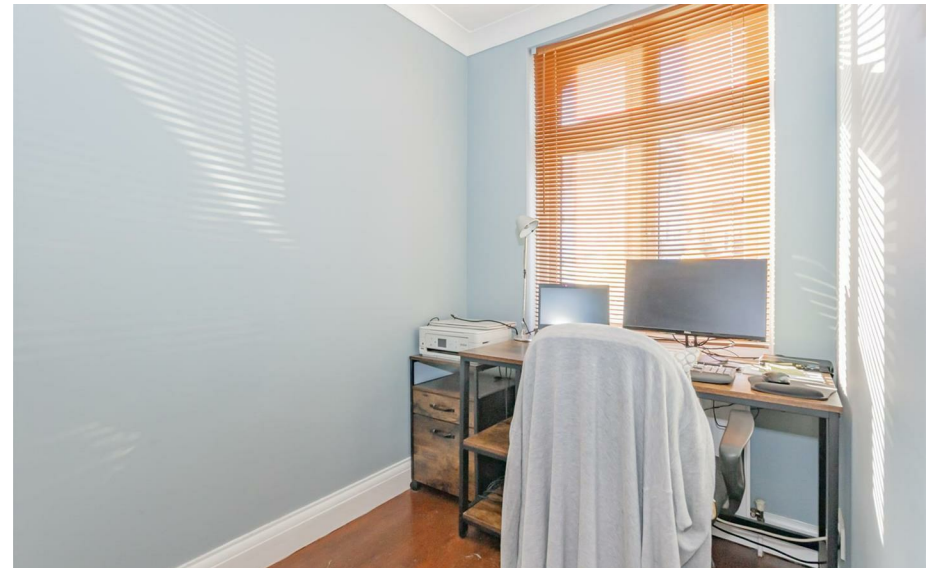
\* SUBSTANTIAL HOME, IDEAL FOR  
LARGE FAMILIES \* LARGE  
OUTBUILDING IN THE GARDEN  
SPANNING 70 SQ. M. (1420.84 SQ. FT.)  
\* DOWNSTAIRS W/C \* OFF-STREET  
PARKING FOR THREE CARS \* OFFICE  
ROOM, PERFECT FOR WORKING  
FROM HOME \* EQUIDISTANT TO  
BARNEHURST AND SLADE GREEN  
TRAIN STATION \* SHORT WALK TO  
THE 99 BUS ROUTE \* SIMILAR  
PROPERTIES REQUIRED \* EPC RATING  
D \* COUNCIL TAX BAND C \*

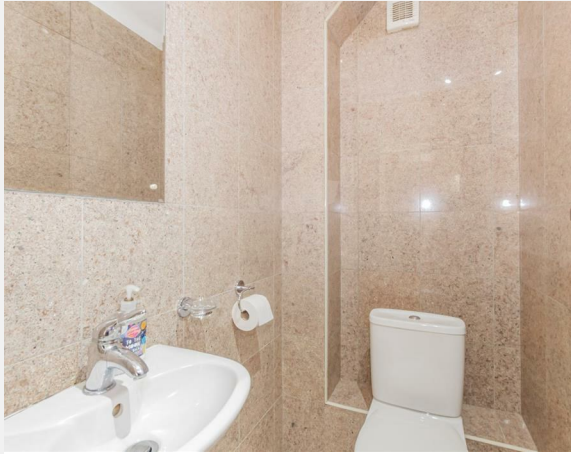


# 83 Holmsdale Grove

£750,000 Freehold

- SUBSTANTIAL HOME, IDEAL FOR LARGE FAMILIES
- DOWNSTAIRS W/C
- OFFICE ROOM, PERFECT FOR WORKING FROM HOME
- SHORT WALK TO THE 99 BUS ROUTE
- EPC RATING D
- LARGE OUTBUILDING IN THE GARDEN SPANNING 70 SQ. M. (1420.84 SQ. FT.)
- OFF-STREET PARKING FOR THREE CARS
- EQIDISTANT TO BARNEHURST AND SLADE GREEN TRAIN STATION
- SIMILAR PROPERTIES REQUIRED
- COUNCIL TAX BAND C





**LIVERMORES**  
THE ESTATE AGENTS

126 Crayford Road  
Crayford  
Kent  
DA1 4ES

01322 550777

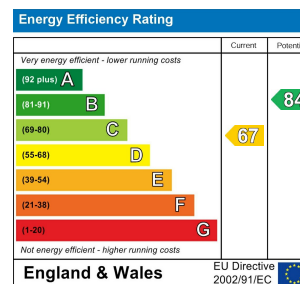
crayford@livermores.co.uk



**Council Tax Band: C**

**Local Authority: Bexley**

Agents Note: Whilst every care has been taken to prepare these particulars, they are for guidance purposes only. All measurements are approximate and are for general guidance purposes only and whilst every care has been taken to ensure their accuracy, they should not be relied upon and potential buyers/tenants are advised to recheck the measurements.



www.livermores.co.uk