



Queensway, Bayswater, W2

Princess Court | 0 Bedrooms

£1,700 per month



LONDON ESTATES



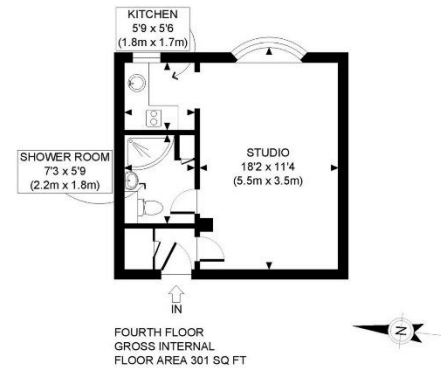
INCLUDES HEATING & HOT WATER | EXCELLENT TRANSPORT LINKS | SINGLE OCCUPIER | FULLY FURNISHED | DAYTIME PORTER | MOMENTS FROM

Available Date: 24th April 2025

EPC Rating: C | Council Tax: B - £1,700 per month



LONDON ESTATES



APPROX. GROSS INTERNAL FLOOR AREA: 301 SQ FT/ 28 SQM

PROPERTY PHOTO PLANS.CO.UK
ONE STOP SHOP FOR PROPERTY MARKETING

This plan is for illustrative purposes only and should be used as such by any prospective client. Whilst every attempt has been made to ensure the accuracy of the Floor Plan contained here, measurements of the doors, windows, rooms and any other items are approximate and no responsibility is taken for any errors, omissions, or misstatement. The services, systems and appliances shown have not been tested and no guarantee as to the operability or efficiency can be given.