

HARRY CHARLES

Property Specialists



Southwold Road, Watford, WD24 7DL

£1,300 Per month

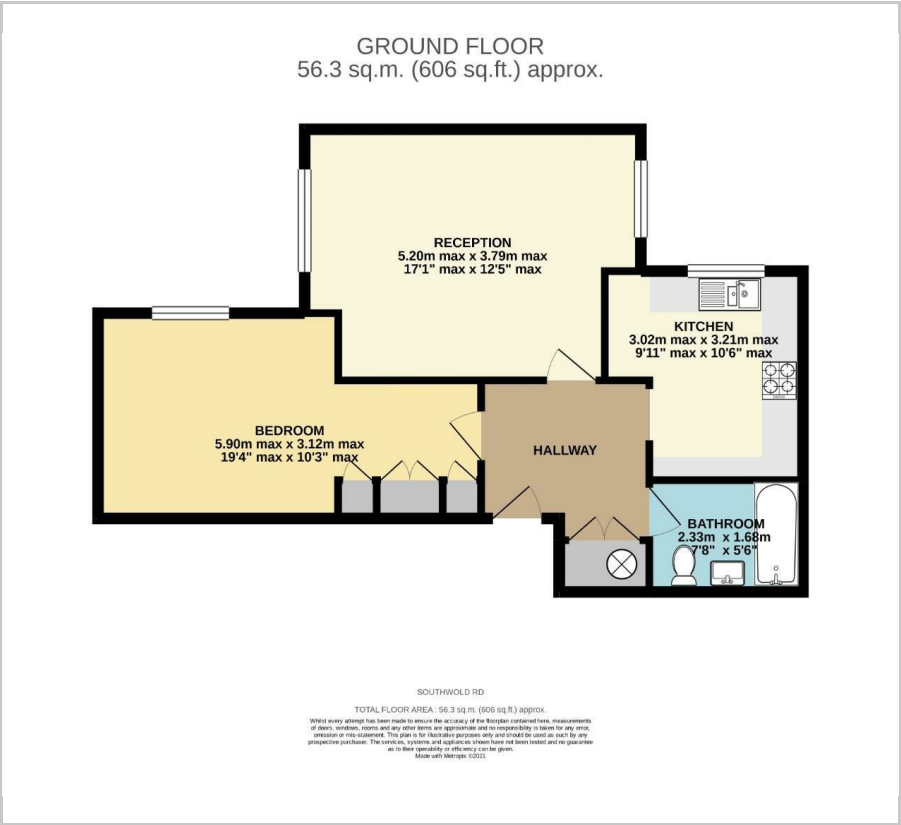


**** AVAILABLE 1ST NOVEMBER - SPACIOUS GROUND FLOOR APARTMENT - LARGER THAN AVERAGE - LOUNGE/DINER - RE-FITTED KITCHEN - DOUBLE BEDROOM WITH ADDITIONAL DRESSING AREA - RE-FITTED BATHROOM - 3 PARKING PERMITS - COUNCIL TAX BAND C - COMMUNAL GARDENS - WELL PRESENTED **** We are delighted to offer for let on an unfurnished basis this larger than average one double bedroom ground floor apartment situated in this popular North Watford location. This well proportioned property benefits from a re-fitted kitchen and bathroom. The apartment comes with 3 parking permits for off road parking. In order to avoid disappointment please contact us without delay to arrange an early appointment to view.

- Spacious Ground Floor Apartment
- Re-fitted Kitchen
- Double Bedroom
- Off Road Parking
- Available 1st November
- Dual Aspect Lounge/Diner
- Re-fitted Bathroom
- Dressing Area To Bedroom
- Council Tax Band C
- Unfurnished



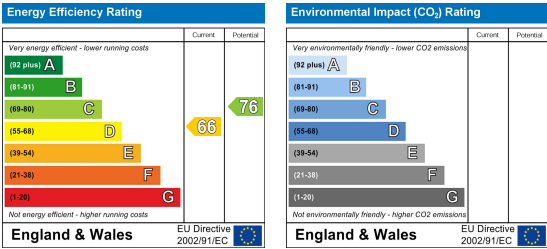
Floor Plan



Area Map



Energy Efficiency Graph



These particulars, whilst believed to be accurate are set out as a general outline only for guidance and do not constitute any part of an offer or contract. Intending purchasers should not rely on them as statements of representation of fact, but must satisfy themselves by inspection or otherwise as to their accuracy. No person in this firms employment has the authority to make or give any representation or warranty in respect of the property.