

HARRY CHARLES

Property Specialists



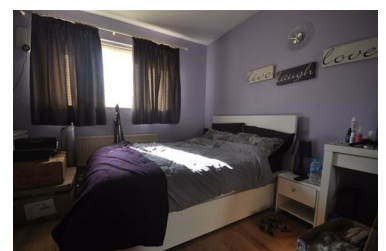
Sherwood Place, Hemel Hempstead, HP2 6PS

£950 Per month



**** Available 13th June **** A bright one bedroom cluster home in the Grove Hill area of Hemel Hempstead, close to local shops, community facilities and local parks. This charming house includes a living room with patio doors onto the garden, a fully fitted kitchen with appliances, a double bedroom with fitted wardrobes, and a modern bathroom with a shower over the bath. Benefits include central heating, double-glazing, residents' parking, and a private, southward-facing garden. Council Tax Band C

- 1 Bed Double Bedroom
- Fitted Wardrobes
- Private Garden
- Council Tax Band C
- Living Room With Patio Doors Onto The Garden
- Residents Parking
- Available 13th June



Additional Information

Parking:

Property comes with allocated spaces

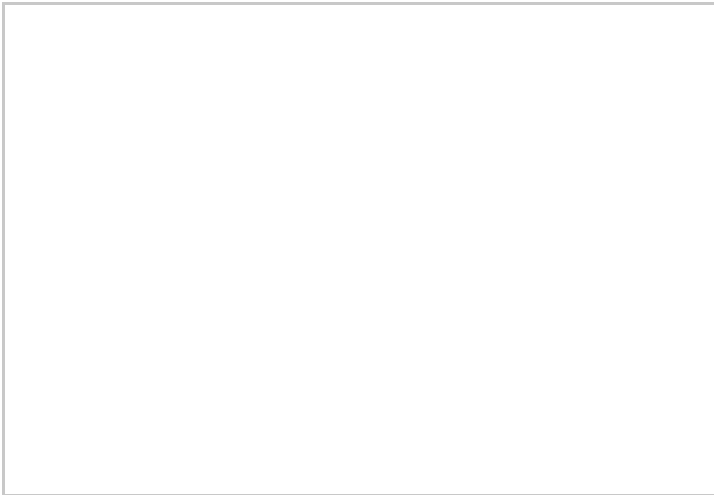
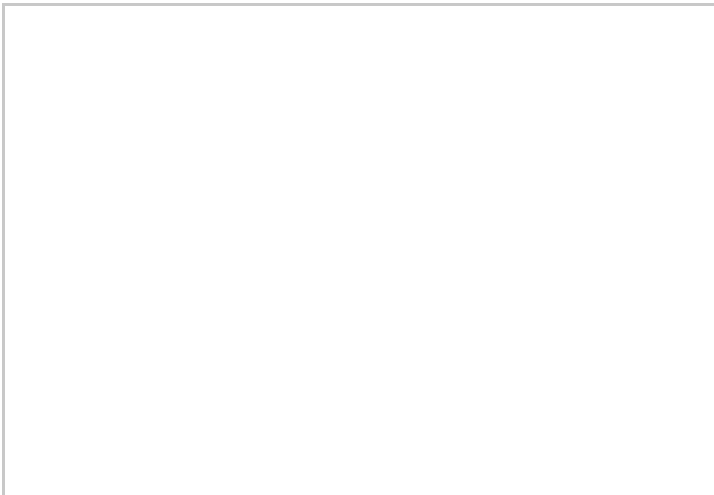
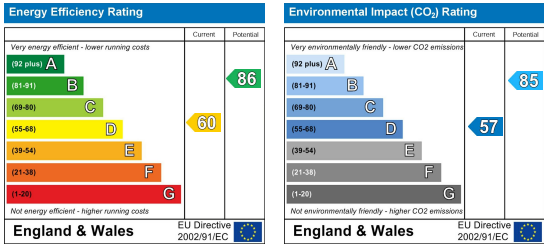
Location:

The property is in the Grove Hill area of Hemel Hempstead, close to local shops and local parks.

Area Map



Energy Efficiency Graph



These particulars, whilst believed to be accurate are set out as a general outline only for guidance and do not constitute any part of an offer or contract. Intending purchasers should not rely on them as statements of representation of fact, but must satisfy themselves by inspection or otherwise as to their accuracy. No person in this firms employment has the authority to make or give any representation or warranty in respect of the property.