

HARRY CHARLES

Property Specialists



Silas Court, Lockhart Road, Watford, WD17 4BQ

£1,250 Per month

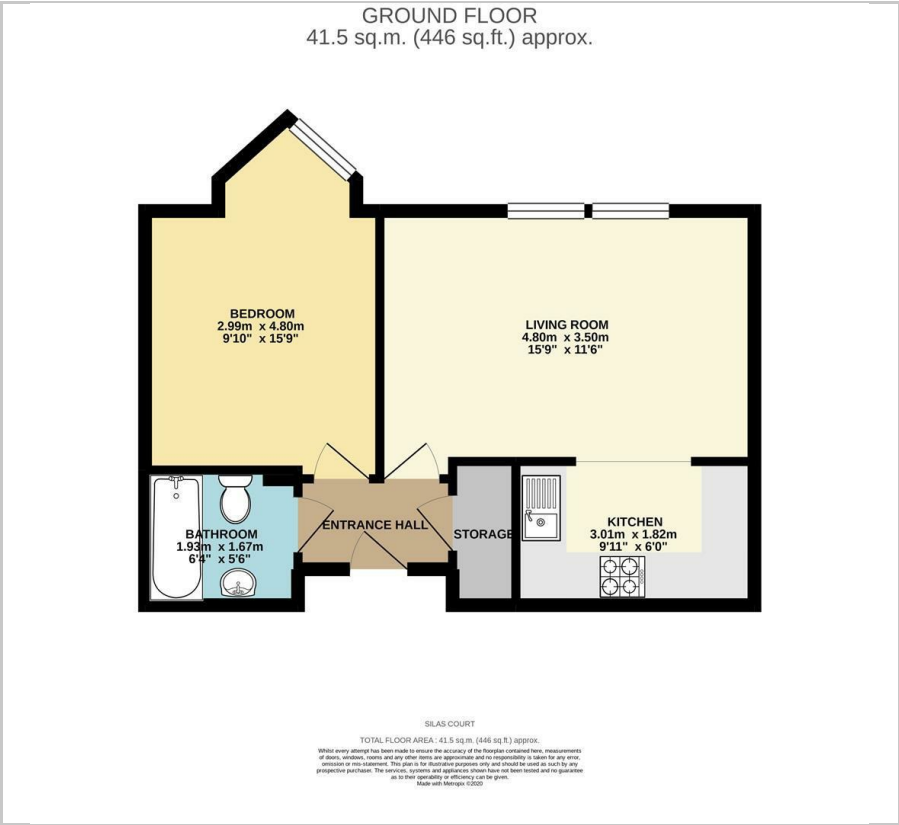


**** AVAILABLE 9TH MAY**** PRESTIGIOUS GATED DEVELOPMENT - USE OF RESIDENTS GYM - GROUND FLOOR ONE DOUBLE BEDROOM APARTMENT - COUNCIL TAX BAND C ** We are delighted to offer for let on an unfurnished basis this ground floor one bedroom apartment situated on the highly regarded Silas Court development which is in Nascot Wood in Watford and being ideally located for Watford Junction mainline railway station. The block has a security intercom entrance system and the apartment has an allocated parking space. The property comprises of an entrance hall, lounge/diner, kitchen, double bedroom and family bathroom. In order to avoid disappointment please contact us without delay to arrange an early appointment to view.

- Ground Floor Apartment
- Allocated Parking
- Kitchen
- Bathroom
- Council Tax Band C
- Gated Development
- Lounge/Diner
- Double Bedroom
- Use Of Gym
- Available 9th May



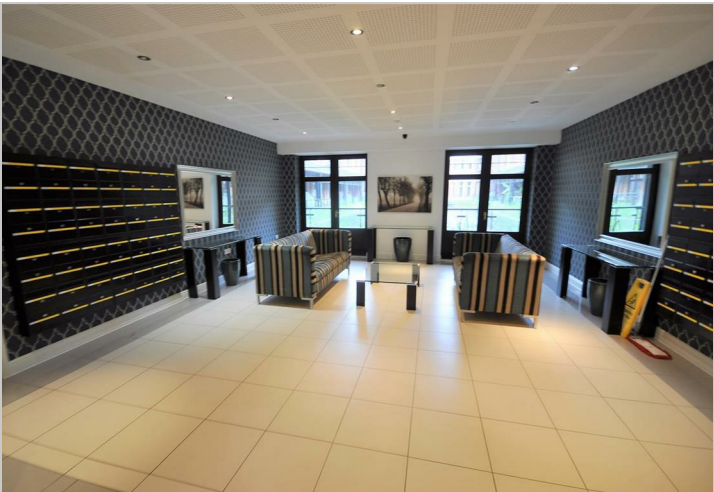
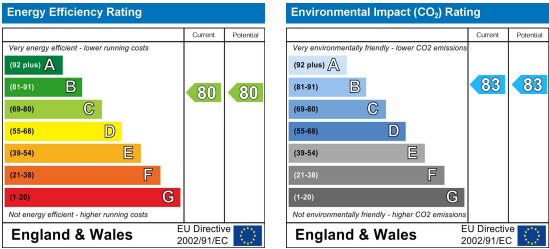
Floor Plan



Area Map



Energy Efficiency Graph



These particulars, whilst believed to be accurate are set out as a general outline only for guidance and do not constitute any part of an offer or contract. Intending purchasers should not rely on them as statements of representation of fact, but must satisfy themselves by inspection or otherwise as to their accuracy. No person in this firms employment has the authority to make or give any representation or warranty in respect of the property.