

# HARRY CHARLES

Property Specialists



Gloucester Court, Watford, WD18 7GF

**Offers in the region of £230,000**



**\*\* NO UPPER CHAIN - EXTENDED LEASE - SOUGHT AFTER LOCATION \*\*** A well presented approx 52sqm one bedroom ground floor apartment close to Watford Metropolitan Line station and local shops. This purpose-built, modern apartment includes a generous living and dining area, an open-plan fitted kitchen with integrated appliances, a double bedroom with a built-in wardrobe space, and a bathroom with three-piece white suite and a shower over the bath. The property also includes ample storage, gas central heating, double glazing, access to communal gardens and an allocated parking space. The property is worthy of an internal viewing so please contact us without delay to arrange an early appointment to view. Council Tax Band C.

- No Upper Chain
- Entry Phone Entrance
- Kitchen
- Double Bedroom
- 1 Allocated Parking Space
- Ground Floor Apartment
- Lounge/Diner
- Bathroom
- Council Tax Band C
- Extended Lease





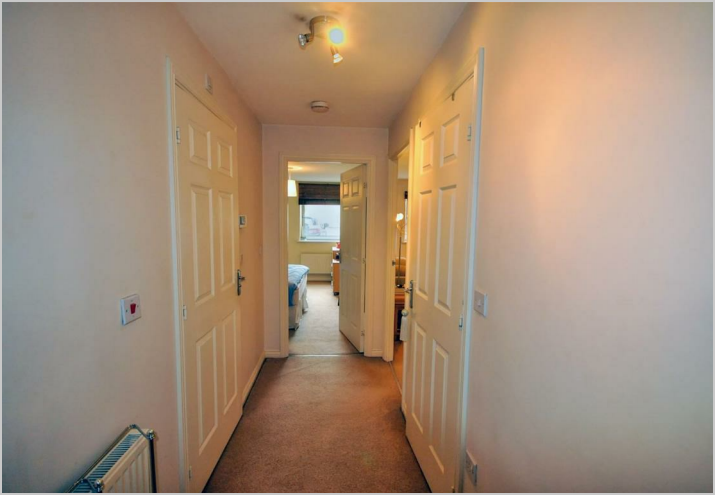
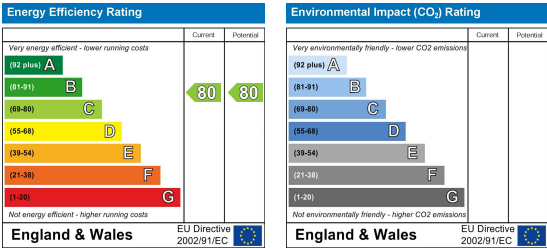
Floor Plan



Area Map



Energy Efficiency Graph



These particulars, whilst believed to be accurate are set out as a general outline only for guidance and do not constitute any part of an offer or contract. Intending purchasers should not rely on them as statements of representation of fact, but must satisfy themselves by inspection or otherwise as to their accuracy. No person in this firms employment has the authority to make or give any representation or warranty in respect of the property.