

HARRY CHARLES

Property Specialists



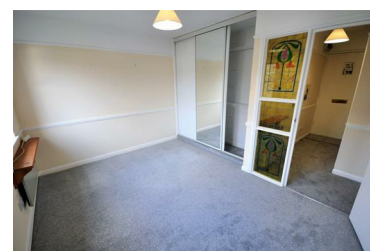
North Orbital Road, Watford, WD25 0RP

£1,000 Per month



** AVAILABLE 10th SEPTEMBER - TOP FLOOR ONE BEDROOM APARTMENT - SPACIOUS LOUNGE - KITCHEN WITH APPLIANCES - DOUBLE BEDROOM WITH BUILT IN WARDROBE- BATHROOM- RE-FITTED CARPETS THROUGHOUT - ONE ALLOCATED PARKING SPACE - USE OF VISITORS PARKING SPACES ** We are delighted to offer for let on an unfurnished basis this one double bedroom top floor apartment ideally situated for the commuter in this Garston location in Watford. The property offers spacious accommodation and is located to the rear of the block and therefore not fronting onto the main road. Externally there are communal gardens and the apartment comes with its own allocated parking space and in addition there is visitors parking available. The property is available immediately and we would ask that you contact us without delay to arrange an early appointment to view. Council Tax Band C

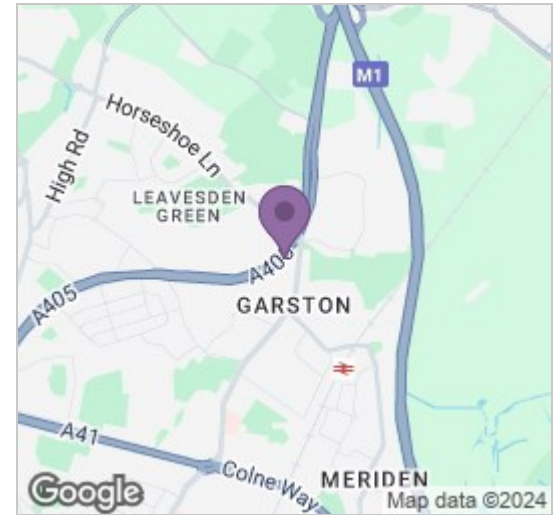
- Top Floor Apartment
- Kitchen With Appliances
- Bathroom
- Council Tax Band C
- Available 10th September
- Spacious Lounge
- Double Bedroom With Built In Wardrobe
- Allocated Parking / Communal Gardens
- Unfurnished
- Re-Carpeted Throughout



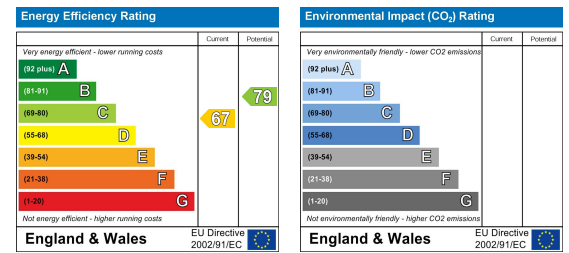
Floor Plan



Area Map



Energy Efficiency Graph



These particulars, whilst believed to be accurate are set out as a general outline only for guidance and do not constitute any part of an offer or contract. Intending purchasers should not rely on them as statements of representation of fact, but must satisfy themselves by inspection or otherwise as to their accuracy. No person in this firm's employment has the authority to make or give any representation or warranty in respect of the property.