

HARRY CHARLES

Property Specialists



Burrell House, Watford, WD24 6AD

£1,800 Per month



**** BRAND NEW 3rd FLOOR TWO BEDROOM APARTMENT - NEVER BEEN LIVED IN - OPEN PLAN LIVING ROOM/KITCHEN - PATIO DOORS LEADING TO BALCONY - MASTER BEDROOM WITH FITTED WARDROBE & EN-SUITE SHOWER ROOM - FURTHER DOUBLE BEDROOM - FAMILY BATHROOM - WASHING MACHINE CUPBOARD - COUNCIL TAX BAND D - SECURITY INTERCOM ENTRANCE - 1 GATED ALLOCATED PARKING SPACE - AVAILABLE NOW **** We are delighted to offer for let on an unfurnished basis this brand new two double bedroom third floor apartment situated in the highly regarded London Square development in North Watford. The property is finished to a very high standard and benefits from an entrance hall, ample storage, an open plan living room/kitchen which leads to a balcony. The master bedroom has a fitted wardrobe and an en-suite shower. There is a further double bedroom and there is a family bathroom. Externally the apartment benefits from a secure allocated parking space to the rear. In order to arrange an early appointment to view, please contact us without further delay.

- Brand New 3rd Floor Apartment
- Open Plan Lounge/Kitchen
- Further Double Bedroom
- Balcony
- High Specification Finish
- Never Been Lived In
- Master Bedroom With En-Suite Shower
- Family Bathroom
- Secure Allocated Parking Space
- Available Now

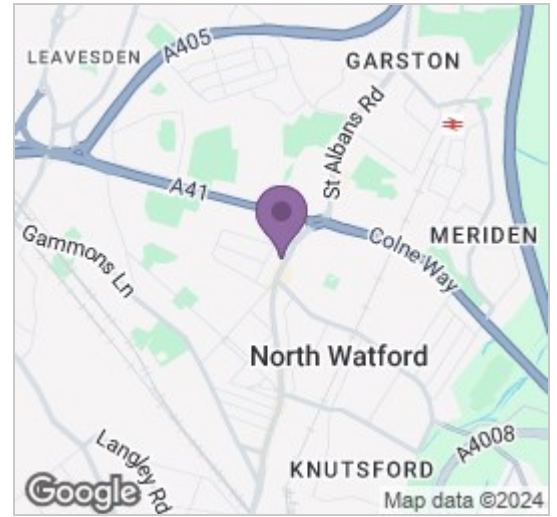


Additional Information

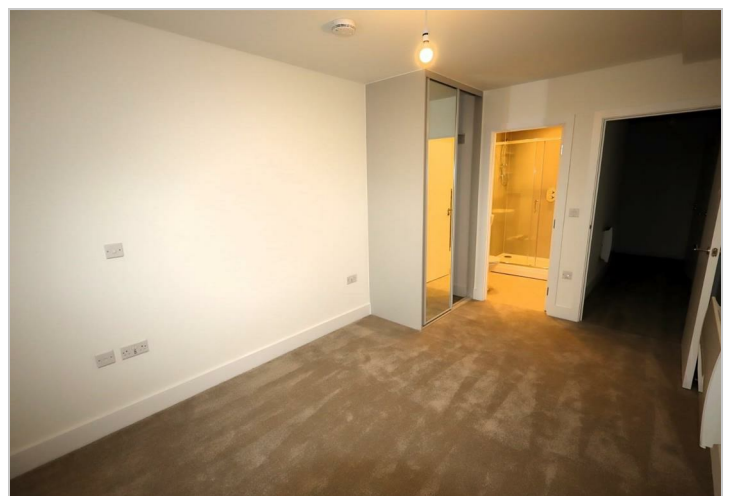
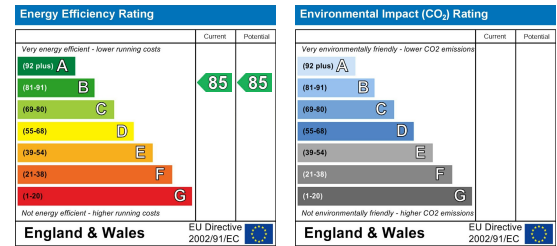
Parking For Viewings

We suggest that you park in the pay and display car park at the top of Longspring next to McDonalds.

Area Map



Energy Efficiency Graph



These particulars, whilst believed to be accurate are set out as a general outline only for guidance and do not constitute any part of an offer or contract. Intending purchasers should not rely on them as statements of representation of fact, but must satisfy themselves by inspection or otherwise as to their accuracy. No person in this firm's employment has the authority to make or give any representation or warranty in respect of the property.