

HARRY CHARLES

Property Specialists



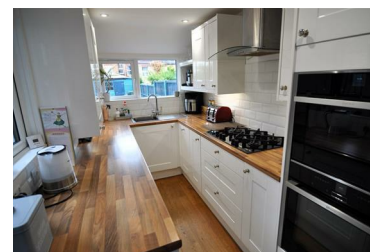
Salisbury Road, Watford, WD24 4DT

Guide price £425,000

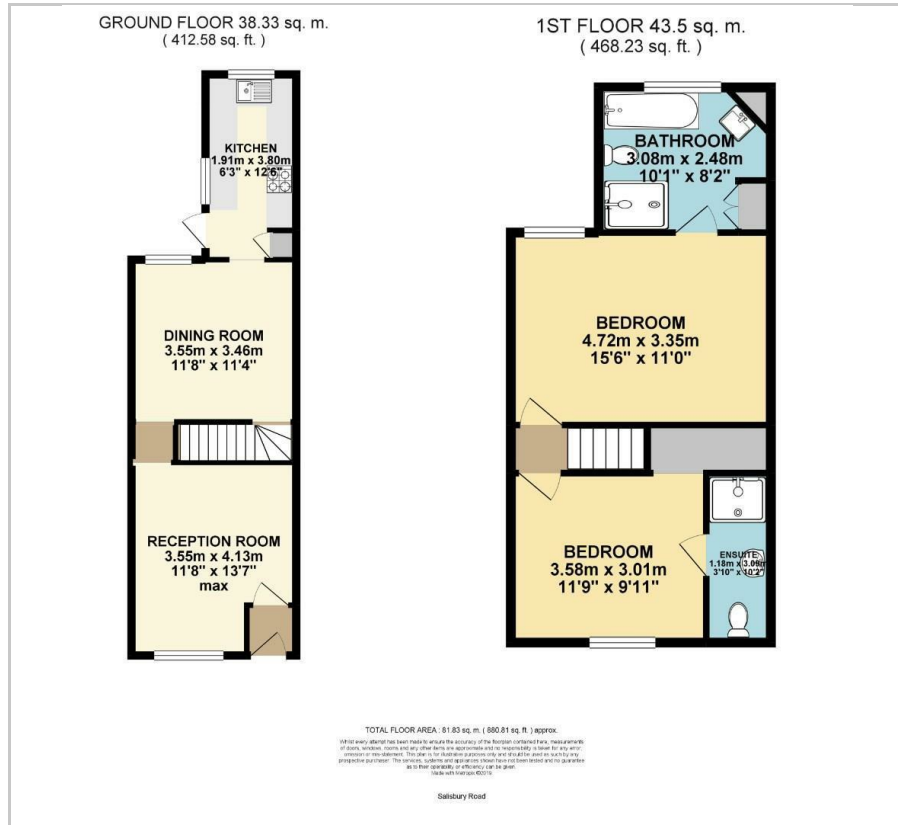


**** EN-SUITE BATHROOM TO MASTER AND EN-SUITE SHOWER ROOM TO SECOND BEDROOM - FULLY RE-FURBISHED THROUGHOUT - RE-FITTED KITCHEN - TWO SEPARATE RECEPTIONS - TWO DOUBLE BEDROOMS - REPLACEMENT DOUBLE GLAZING **** We are delighted to have received Sole agency instructions to offer for sale this immaculately presented and greatly improved two double bedroom Victorian terraced home situated in this popular North Watford location. The property has been the subject of renovation and has the rarely available benefit of en-suites to both of the bedrooms. This property is sure to attract considerable interest and homes of this quality rarely become available so we would ask that you contact us without delay to arrange an early appointment to view.

- Well Presented Two Bedroom Home
- Two Separate Reception Rooms
- Entrance Porch
- Replacement Double Glazing
- Internal Viewing Essential
- En-Suites To Both Double Bedrooms
- Re-fitted Kitchen
- Rear Garden
- Council Tax Band C



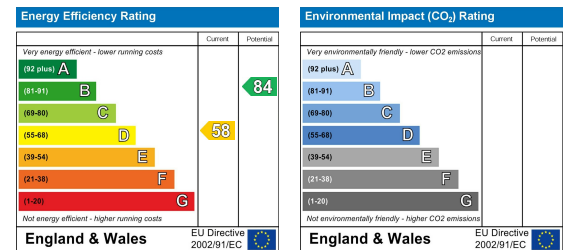
Floor Plan



Area Map



Energy Efficiency Graph



These particulars, whilst believed to be accurate are set out as a general outline only for guidance and do not constitute any part of an offer or contract. Intending purchasers should not rely on them as statements of representation of fact, but must satisfy themselves by inspection or otherwise as to their accuracy. No person in this firm's employment has the authority to make or give any representation or warranty in respect of the property.