

HARRY CHARLES

Property Specialists



Bradshaw Road, Watford, WD24 4DF

Price **£450,000**



**** EXTENDED AND WELL PRESENTED TWO DOUBLE BEDROOM HOME - OPEN PLAN LOUNGE/DINER - RE-FITTED AND EXTENDED KITCHEN/BREAKFAST ROOM - CLOAKROOM - TWO DOUBLE BEDROOMS - RE-FITTED SPACIOUS BATHROOM OFF OF LANDING - ATTRACTIVE REAR GARDEN **** We are delighted to offer for sale this extended and greatly improved two double bedroom home situated on this popular road in North Watford. The property has been extended to the ground floor at the rear and now provides an open plan lounge/diner, re-fitted kitchen/breakfast room and a cloakroom to the ground floor. To the first floor are two double bedrooms and the re-fitted spacious bathroom - all off the landing. There is an attractive garden to the rear that has right of way access to the rear. In order to avoid disappointment please contact us without delay to arrange an early viewing.

- Extended Terraced Home
- Open Plan Lounge/Diner
- Cloakroom
- Re-fitted Spacious Bathroom
- Council Tax Band C
- Very Well Presented
- Re-fitted Kitchen/Breakfast Room
- Two Double Bedrooms
- Attractive Rear Garden
- Internal Viewing Is Imperative



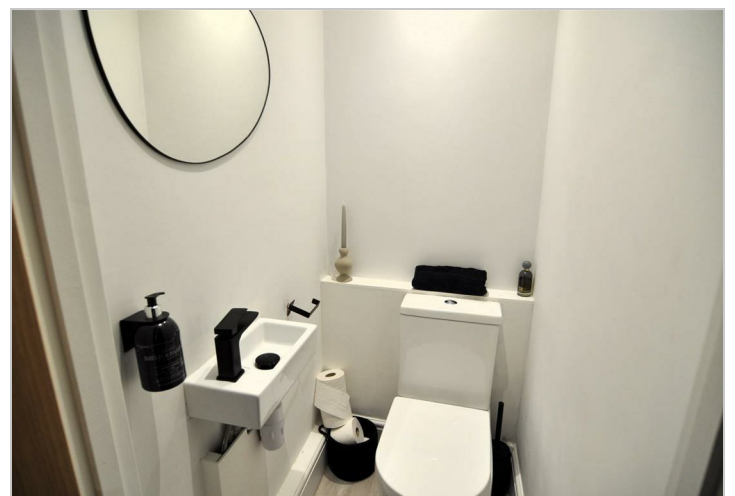
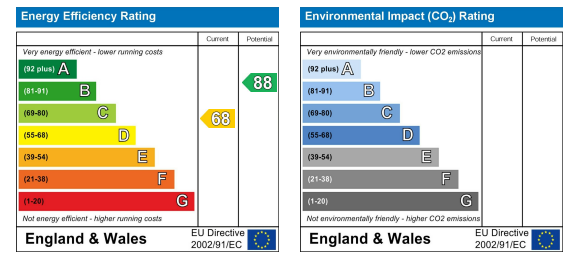
Floor Plan



Area Map



Energy Efficiency Graph



These particulars, whilst believed to be accurate are set out as a general outline only for guidance and do not constitute any part of an offer or contract. Intending purchasers should not rely on them as statements of representation of fact, but must satisfy themselves by inspection or otherwise as to their accuracy. No person in this firm's employment has the authority to make or give any representation or warranty in respect of the property.