

HARRY CHARLES

Property Specialists



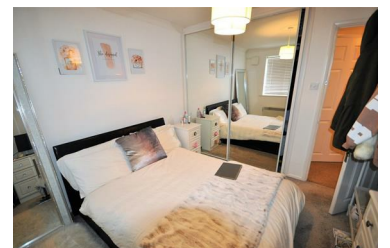
Courtlands Close, Watford, WD24 5GX

Price £240,000



**** TWO BEDROOM GROUND FLOOR APARTMENT - SECURITY ENTRANCE - LOUNGE/DINER- KITCHEN- RE-FITTED BATHROOM - TWO BEDROOMS - DOUBLE GLAZED - OFF ROAD PARKING - COUNCIL TAX BAND C - NO UPPER CHAIN **** We are delighted to offer for Sale this two bedroom ground floor apartment situated in this popular North Watford cul-de-sac in close proximity to the Warner Brothers Studio's . This well presented property comprises of an entrance hall, lounge/diner, kitchen, two bedrooms and bathroom with window. The property comes with parking and is offered with no upper chain. Please contact us without delay to arrange an early appointment to view.

- Ground Floor Apartment
- Security Entrance
- Kitchen
- Off Road Parking
- No Upper Chain
- 2 Bedrooms
- Lounge/Diner
- Bathroom With Window
- Council Tax Band C



Additional Information

Location

The property is situated in a cul-de-sac location in North Watford.

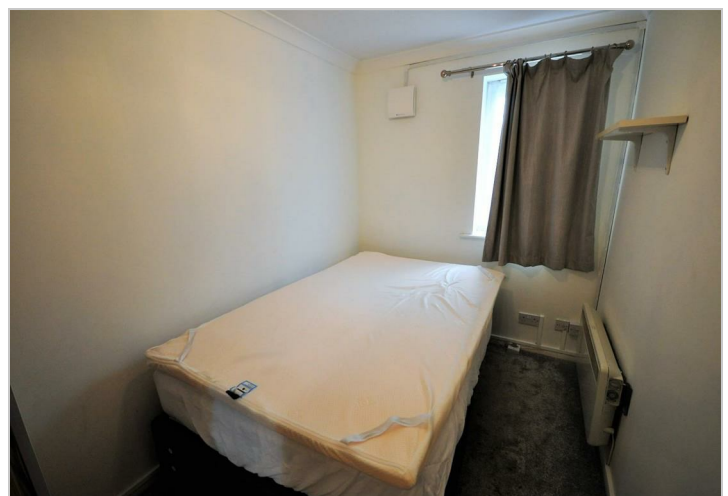
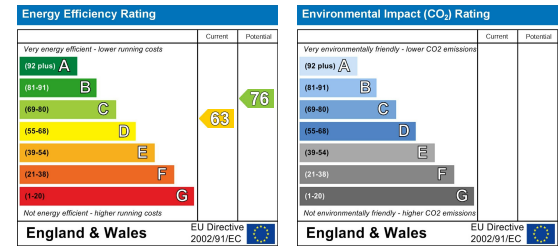
Parking

For viewings there is un-restricted on road parking available within the cul-de-sac.

Area Map



Energy Efficiency Graph



These particulars, whilst believed to be accurate are set out as a general outline only for guidance and do not constitute any part of an offer or contract. Intending purchasers should not rely on them as statements of representation of fact, but must satisfy themselves by inspection or otherwise as to their accuracy. No person in this firm's employment has the authority to make or give any representation or warranty in respect of the property.