

# HARRY CHARLES

Property Specialists



The White House, Hemel Hempstead, HP1 1LD

**£1,075 Per month**



**\*\*AVAILABLE 2nd July 2024 - COUNCIL TAX BAND B- PARKING SPACE TO RENT \*\***  
A Grade II listed Georgian two double bedroom apartment. This historic residence offers extensive modern living accommodation, while retaining a wealth of original features including high ceilings, cornicing and wooden flooring to some areas. The property comprises a spacious open-plan kitchen/reception with carpet to the reception area. Two good size double bedrooms and a family bathroom. The property is just a short walk to Hemel Hempstead town centre and the Old Town. Water is £25.00 pcm extra for an individual or £30.00 pcm for a couple on top of the rent. Also an allocated parking space is available upon request at an amount of £25.00 pcm. Please contact us without delay to arrange an early appointment to view.

- Open Plan Kitchen / Receptionist
- 2 Double Bedrooms
- 1st Floor
- Bathroom
- Unfurnished
- Council Tax Band B
- Available July 2024

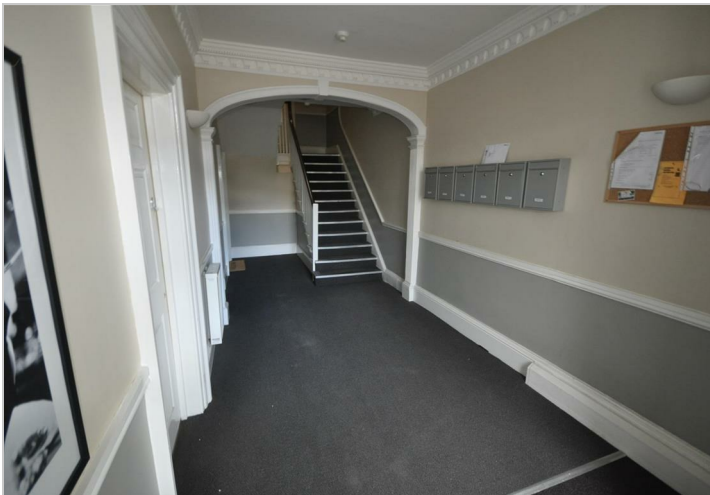
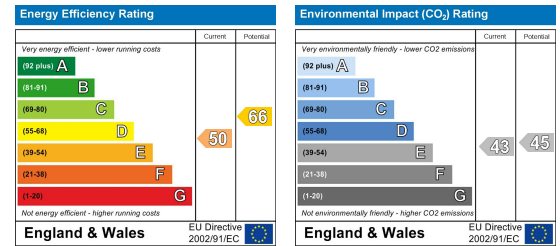


## Additional Information

## Area Map



## Energy Efficiency Graph



These particulars, whilst believed to be accurate are set out as a general outline only for guidance and do not constitute any part of an offer or contract. Intending purchasers should not rely on them as statements of representation of fact, but must satisfy themselves by inspection or otherwise as to their accuracy. No person in this firm's employment has the authority to make or give any representation or warranty in respect of the property.