

HARRY CHARLES

Property Specialists



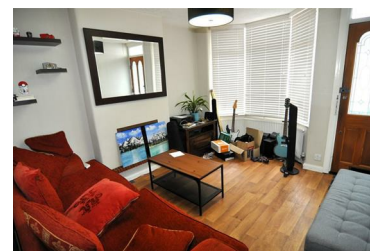
Bradshaw Road, Watford, WD24 4DE

Price **£365,000**

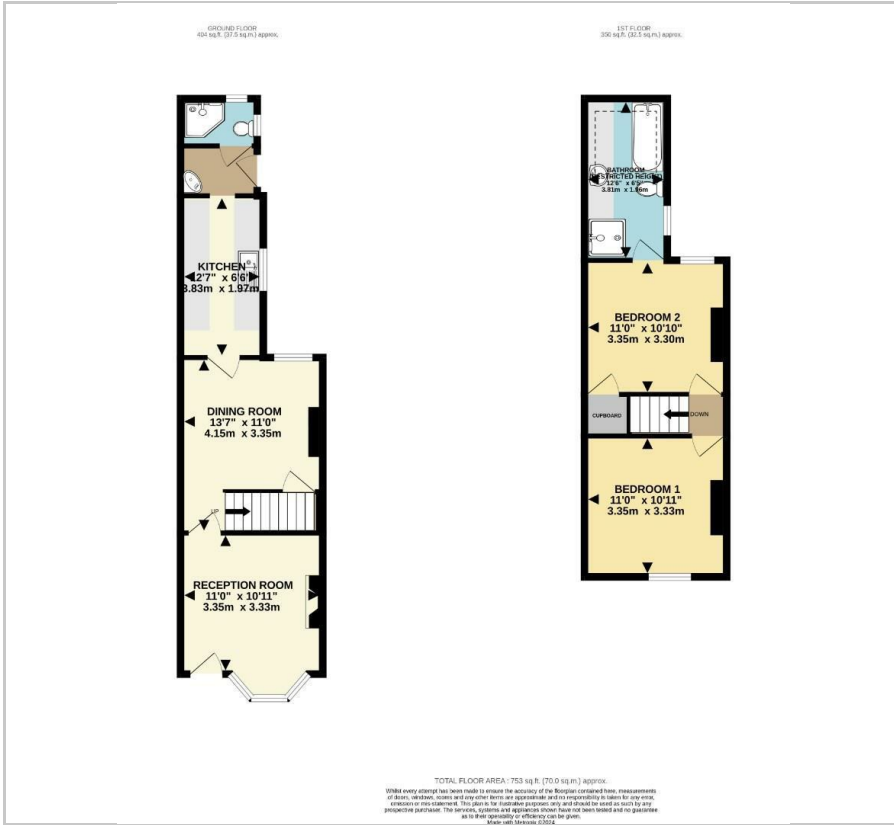


**** TWO BEDROOM TERRACED HOME - 2 SEPARATE RECEPTION ROOMS - KITCHEN - DOWNSTAIRS SHOWER ROOM - EN-SUITE BATHROOM TO THE REAR BEDROOM - COUNCIL TAX BAND C - REAR GARDEN - RESIDENTS PERMIT PARKING AVAILABLE - NO UPPER CHAIN **** We are delighted to offer for sale this two bedroom terraced home situated on this popular North Watford road. The property comprises of two separate reception rooms, a galley kitchen which leads to the downstairs shower room. To the first floor are two bedrooms with an en-suite bathroom to the rear bedroom. Externally there is a garden to the rear and on road residents parking permits are available to purchase. The property is offered with no upper chain and we would ask that you contact us without delay to arrange an early appointment to view.

- Two Bedroom Terraced House
- Kitchen
- En-Suite Bathroom To Rear Bedroom
- Council Tax Band C
- No Upper Chain
- 2 Separate Reception Rooms
- Downstairs Shower Room
- Rear Garden
- Residents Parking Permits Available



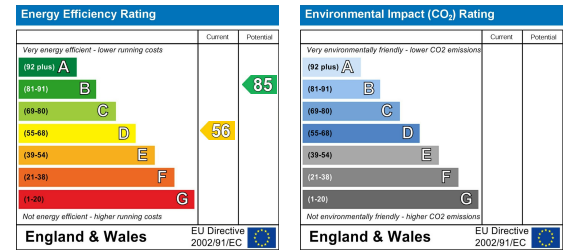
Floor Plan



Area Map



Energy Efficiency Graph



These particulars, whilst believed to be accurate are set out as a general outline only for guidance and do not constitute any part of an offer or contract. Intending purchasers should not rely on them as statements of representation of fact, but must satisfy themselves by inspection or otherwise as to their accuracy. No person in this firms employment has the authority to make or give any representation or warranty in respect of the property.