

HARRY CHARLES

Property Specialists



Elton Park, Watford, WD17 4NW

Offers in the region of £200,000

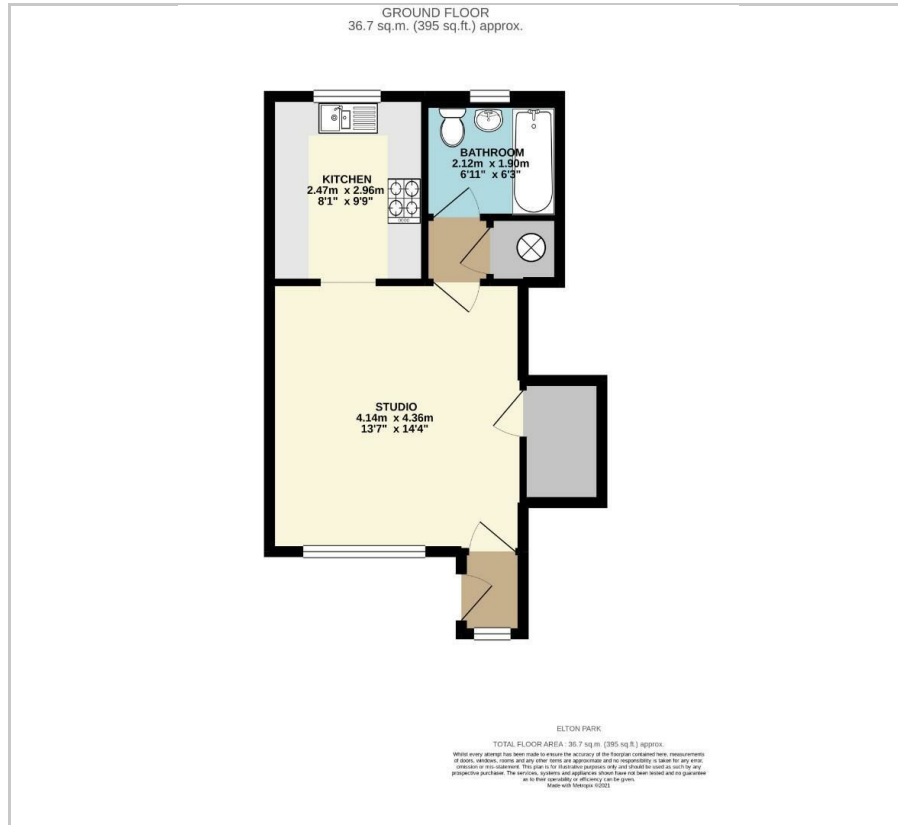


**** GROUND FLOOR SPACIOUS STUDIO FLAT - RE-FITTED KITCHEN - LIVING/BED AREA WITH FITTED WALL MOUNTED BED - BATHROOM WITH WINDOW - UTILITY CUPBOARD - ALLOCATED PARKING - COMMUNAL GARDEN TO REAR - NO UPPER CHAIN - LENGTHY LEASE - NASCOT WOOD CUL-DE-SAC **** We are delighted to have received Sole agency instructions to offer for sale this rarely available ground floor studio flat situated in this popular Nascot Wood cul-de-sac. The property benefits from a high specification re-fitted kitchen, a spacious living/bedroom area with wall mounted bed and a bathroom to the rear. Externally there is an allocated parking space to the front and a communal garden to the rear. The property is offered with no upper chain and we would ask that you contact us without delay to arrange an early appointment to view. Please note that the photographs show the property from nearly 3 years ago before it was let out.

- Ground Floor Studio Apartment
- Fitted Double Bed
- Utility Cupboard
- Allocated Parking Space
- Council Tax Band B
- Re-fitted Kitchen
- Living/Bedroom Area
- Bathroom
- Communal Garden
- No Upper Chain



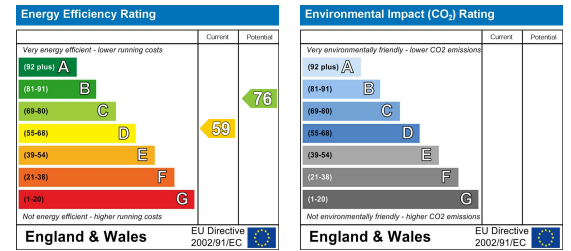
Floor Plan



Area Map



Energy Efficiency Graph



These particulars, whilst believed to be accurate are set out as a general outline only for guidance and do not constitute any part of an offer or contract. Intending purchasers should not rely on them as statements of representation of fact, but must satisfy themselves by inspection or otherwise as to their accuracy. No person in this firm's employment has the authority to make or give any representation or warranty in respect of the property.