

HARRY CHARLES

Property Specialists



St. Albans Road, Watford, WD24 4AU

£1,850 Per month



**** SPACIOUS 3 BEDROOM SPLIT LEVEL MAISONETTE - FULLY RE-FURBISHED - NUMEROUS CHARACTER FEATURES - RE-FITTED KITCHEN/BREAKFAST ROOM - BRIGHT & AIRY LOUNGE/DINER - RE-FITTED BATHROOM AND SEPARATE W.C - MASTER BEDROOM ON 1ST FLOOR - 2 FURTHER BEDROOMS ON 2ND FLOOR - COUNCIL TAX BAND C - NEW CARPETS - RE-DECORATED THROUGHOUT - AVAILABLE NOW **** If you are looking for a spacious 3 bedroom property that has the 'Wow' factor then this could very possibly be the property for you! Being fully re-furnished throughout to provide a very welcoming living space including a re-fitted kitchen/breakfast room and a re-fitted bathroom with separate W.C we would ask that you contact us without delay to arrange an early appointment to view to avoid disappointment.

- Spacious 3 Bedroom Split Level
- Fully Re-Furnished Maisonette
- Numerous Character Features
- Re-fitted Kitchen/ Breakfast Including High Ceilings
- Airy Lounge/Diner
- Re-fitted Bathroom & Separate W.C
- 2 Further Bedrooms On Top Floor
- New Carpets & Re-decorated
- Council Tax Band C
- Available Now



Additional Information

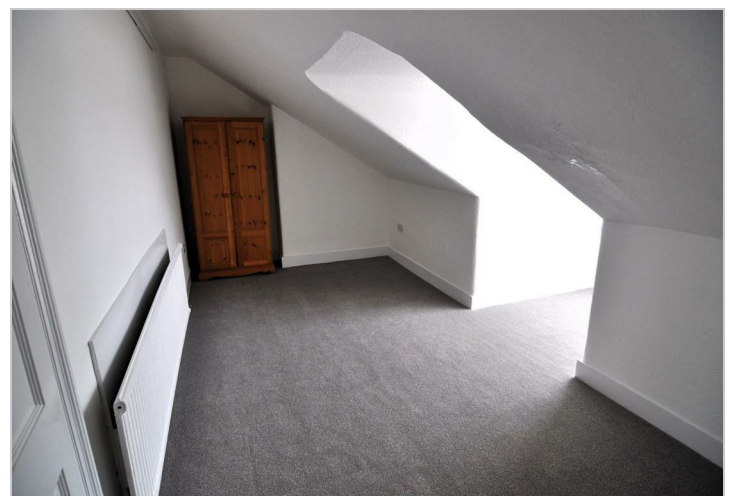
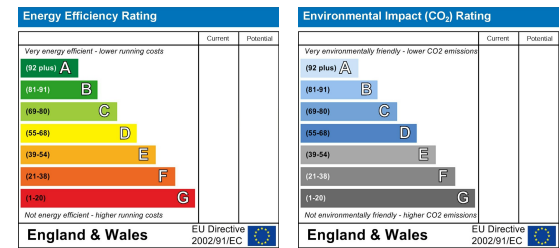
Parking

For viewings there are pay and display bays on St Albans road to the front and there may also be parking in Yarmouth Road - permit time dependant.

Area Map



Energy Efficiency Graph



These particulars, whilst believed to be accurate are set out as a general outline only for guidance and do not constitute any part of an offer or contract. Intending purchasers should not rely on them as statements of representation of fact, but must satisfy themselves by inspection or otherwise as to their accuracy. No person in this firm's employment has the authority to make or give any representation or warranty in respect of the property.