



Poseidon Court Homer Drive, London E14 3UG



welcome to

Poseidon Court Homer Drive, London

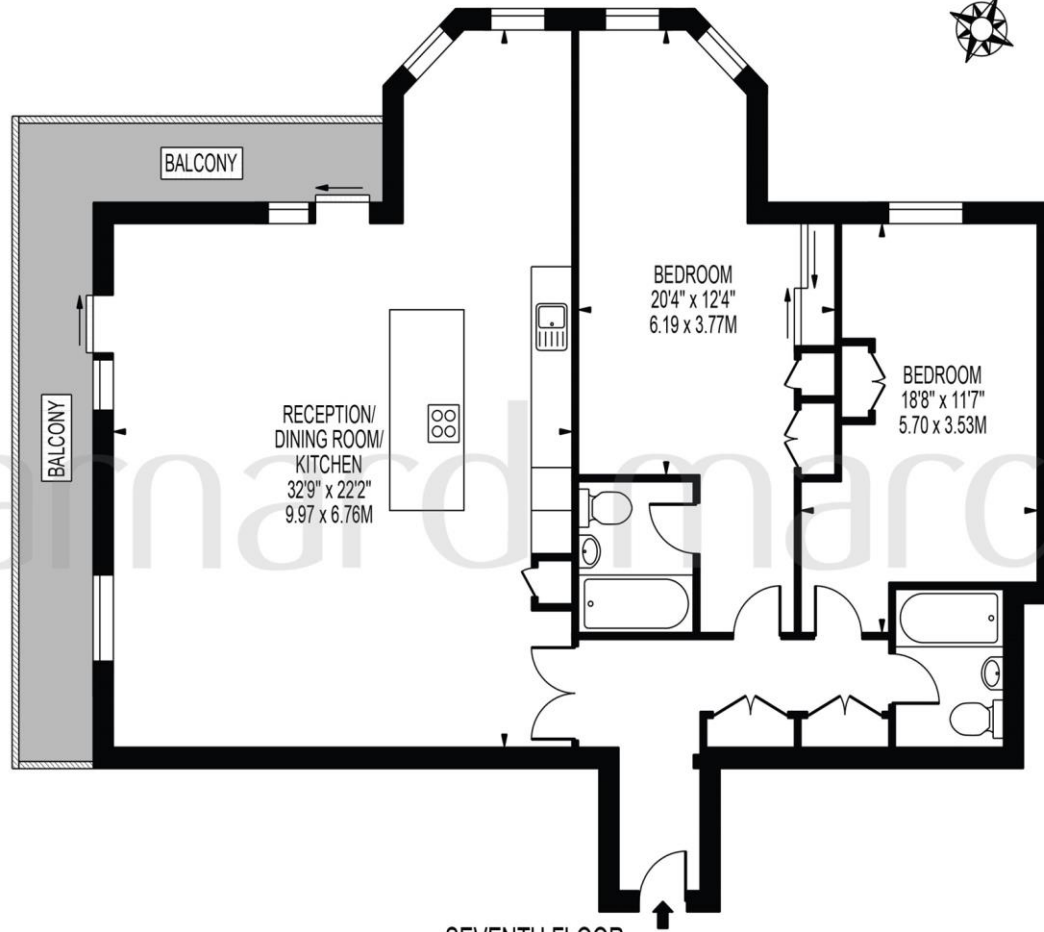
****TWO BEDROOM EXECUTIVE APARTMENT****

Briefly comprising of an entrance hall, a refurbished OPEN-PLAN reception/dining room/kitchen complete with PRIVATE WEST-FACING BALCONY with views of LONDON, MASTER BEDROOM with fully fitted EN-SUITE, second bedroom & family bathroom.



POSEIDON COURT

APPROXIMATE GROSS INTERNAL FLOOR AREA: 1229 SQ FT - 114.22 SQ M



SEVENTH FLOOR

FOR ILLUSTRATION PURPOSES ONLY

THIS FLOOR PLAN SHOULD BE USED AS A GENERAL OUTLINE FOR GUIDANCE ONLY AND DOES NOT CONSTITUTE IN WHOLE OR IN PART AN OFFER OR CONTRACT. ANY INTENDING PURCHASER OR LESSEE SHOULD SATISFY THEMSELVES BY INSPECTION, SEARCHES, ENQUIRIES AND FULL SURVEY AS TO THE CORRECTNESS OF EACH STATEMENT. ANY AREAS, MEASUREMENTS OR DISTANCES QUOTED ARE APPROXIMATE AND SHOULD NOT BE USED TO VALUE A PROPERTY OR BE THE BASIS OF ANY SALE OR LET.

Entrance Hall

Reception/ Dining/ Kitchen

32' 9" x 22' 2" (9.98m x 6.76m)

Private Balcony

Bedroom One

20' 4" x 12' 4" (6.20m x 3.76m)

En-Suite

Bedroom Two

18' 8" x 11' 7" (5.69m x 3.53m)

Bathroom

welcome to

Poseidon Court Homer Drive, London

- TWO BEDROOM EXECUTIVE APARTMENT WITH NO ONWARD CHAIN
- UNDERGROUND ALLOCATED OFF-STREET PARKING
- 24 HOUR CONCIERGE
- GYM, SWIMMING POOL, SAUNA FACILITIES
- STUNNING CITY AND THAMES RIVER VIEWS

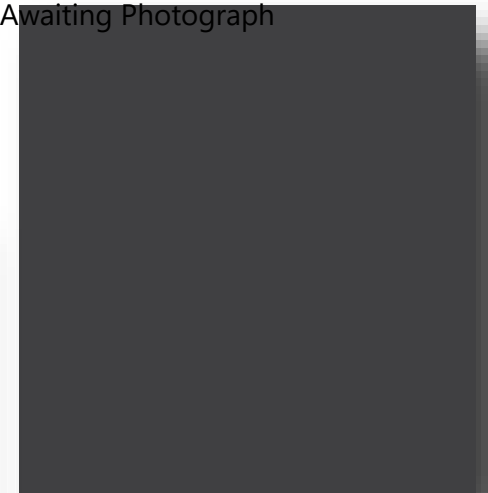
Tenure: Leasehold EPC Rating: D

offers in excess of

£750,000



Awaiting Photograph



view this property online [barnardmarcus.co.uk/Property/PKM102630](https://www.barnardmarcus.co.uk/Property/PKM102630)

This is a Leasehold property with details as follows; Term of Lease 125 years from 25 Mar 1988. Should you require further information please contact the branch. Please Note additional fees could be incurred for items such as Leasehold packs.



Property Ref:
PKM102630 - 0005

1. MONEY LAUNDERING REGULATIONS Intending purchasers will be asked to produce identification documentation at a later stage and we will ask for your co-operation in order that there is no delay in agreeing the sale. 2. These particulars do not constitute part or all of an offer or contract. 3. The measurements indicated are supplied for guidance only and as such must be considered incorrect. Potential buyers are advised to recheck measurements before committing to any expense. 4. We have not tested any apparatus, equipment, fixtures or services and it is in the buyers interest to check the working condition of any appliances. 5. Where an EPC, or a Home Report (Scotland only) is held for this property, it is available for inspection at the branch by appointment. If you require a printed version of a Home Report, you will need to pay a reasonable production charge reflecting printing and other costs. 6. We are not able to offer an opinion either written or verbal on the content of these reports and this must be obtained from your legal representative. 7. Whilst we take care in preparing these reports, a buyer should ensure that his/her legal representative confirms as soon as possible all matters relating to title including the extent and boundaries of the property and other important matters before exchange of contracts.


barnard marcus



020 7635 8641



peckham@barnardmarcus.co.uk



152 Rye Lane, Peckham, LONDON, SE15 4NB



[barnardmarcus.co.uk](https://www.barnardmarcus.co.uk)