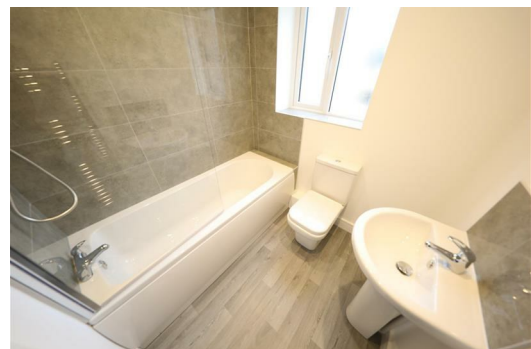




**SYMONDS + GREENHAM**

*Estate and Letting Agents*



## 5 Woodside, Saltshouse Road, Hull, East Yorkshire HU8 9HR

### £265,000

SUTTON PLACE NEW BUILD DEVELOPMENT - FOUR BED SEMI DETACHED HOME - THREE BATHROOMS - INTEGRATED GARAGE - OPEN PLAN KITCHEN/DINER - HELP TO BUY SCHEME AVAILABLE

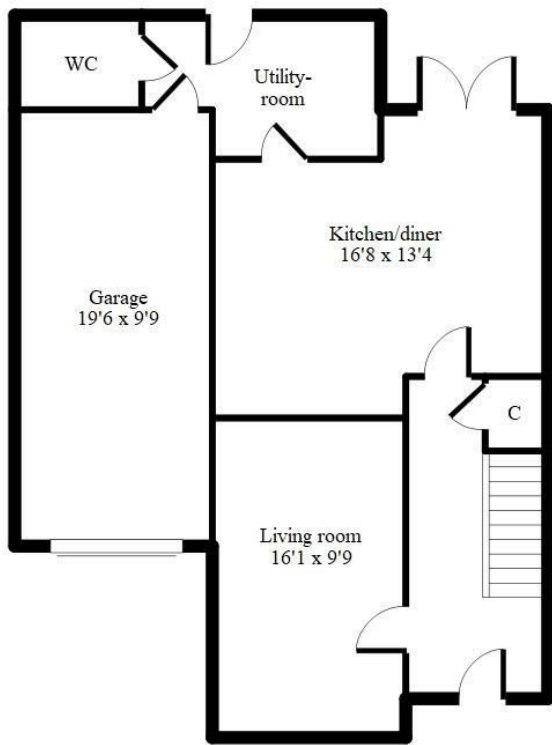
Sutton Village has long been one of the most sought after places to live in Hull and the new development at Sutton Place will be a welcome addition to the picturesque village. This exclusive development will consist of three and four bed semi detached and detached new build homes ranging from £235,000 to £345,000.

Plot 5 is one of a number of stunning four bedroom semi detached homes with three bathrooms including two en suites, living room, open plan kitchen/diner, utility room, downstairs WC and integrated garage.

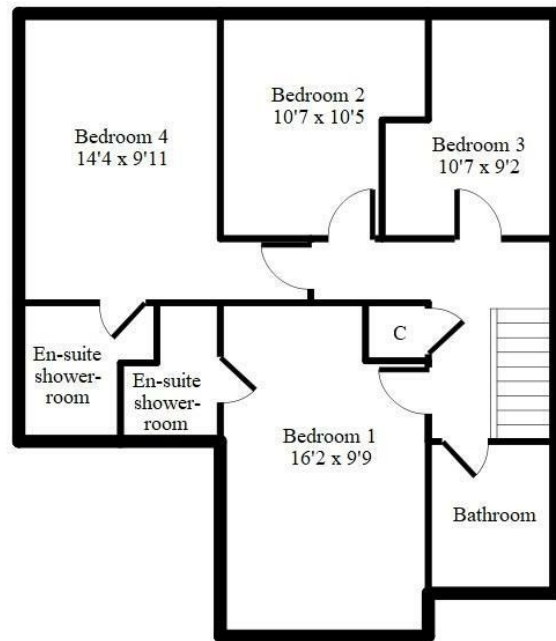
Interest is expected to be very high on these properties so anyone interested in reserving a plot should register their interest as soon as possible.

Call our New Homes Team and book your viewing on one of the show homes today





Ground floor



First floor

DISCLAIMER - Actual room sizes may differ slightly from those detailed on the above floorplans. Some plots will be a mirrored layout of the above floorplan.

Energy Efficiency Rating		Environmental Impact (CO <sub>2</sub> ) Rating	
Current	Potential	Current	Potential
Very energy efficient - lower running costs		Very environmentally friendly - lower CO <sub>2</sub> emissions	
(92 plus) <b>A</b>		(92 plus) <b>A</b>	
(81-91) <b>B</b>		(81-91) <b>B</b>	
(69-80) <b>C</b>		(69-80) <b>C</b>	
(55-68) <b>D</b>		(55-68) <b>D</b>	
(39-54) <b>E</b>		(39-54) <b>E</b>	
(21-38) <b>F</b>		(21-38) <b>F</b>	
(1-20) <b>G</b>		(1-20) <b>G</b>	
Not energy efficient - higher running costs		Not environmentally friendly - higher CO <sub>2</sub> emissions	
England & Wales		England & Wales	
EU Directive 2002/91/EC		EU Directive 2002/91/EC	

