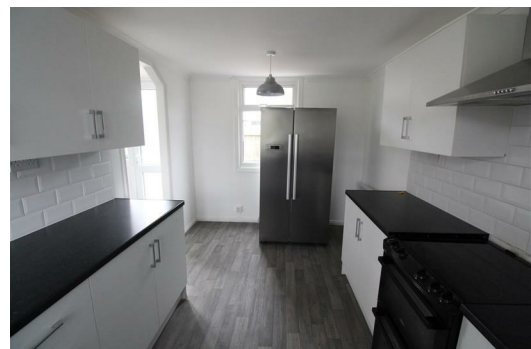




SYMONDS + GREENHAM

Estate and Letting Agents



20 Whitstone Close, Hull, HU7 4DY

£675

THREE BEDROOM
END TERRACE
AVAILABLE NOW

Three bed end terrace property located in the sought-after area of Whitstone Close in Bransholme, Hull. This delightful end-terraced house boasts a cosy reception room, perfect for relaxing after a long day. With three bedrooms, there's ample space for a growing family or for those in need of a home office or guest room.

The property features a well-maintained bathroom, ensuring convenience for all residents. The large rear yard is a fantastic addition, providing a great outdoor space for entertaining guests, gardening, or simply enjoying the fresh air.

Situated in an excellent location, this property offers easy access to local amenities, schools, and transport links, making it ideal for those seeking convenience and a sense of community.

Energy Efficiency Rating		Current	Potential
Very energy efficient - lower running costs			
(92 plus) A			
(81-91) B			
(69-80) C			
(55-68) D			
(39-54) E			
(21-38) F			
(1-20) G			
Not energy efficient - higher running costs			
England & Wales	EU Directive 2002/91/EC	71	85

Environmental Impact (CO ₂) Rating		Current	Potential
Very environmentally friendly - lower CO ₂ emissions			
(02 plus) A			
(81-91) B			
(69-80) C			
(55-68) D			
(39-54) E			
(21-38) F			
(1-20) G			
Not environmentally friendly - higher CO ₂ emissions			
England & Wales	EU Directive 2002/91/EC		

