



# ESTUARY BUSINESS PARK SOUTH LIVERPOOL L24 8QR

Grade 'A' Office suite to Let 5,102 sq Ft  
(473.98 sq M)





# Welcome to KierHouse



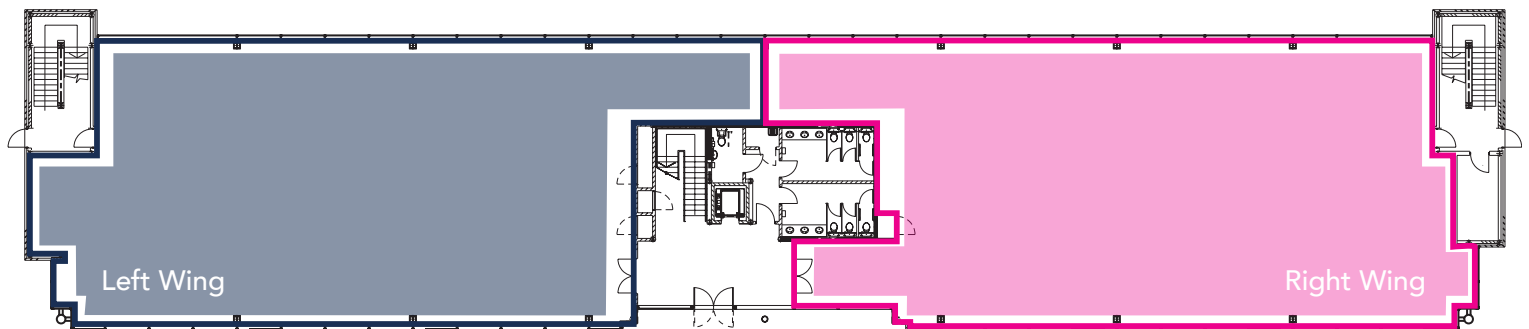
## ACCOMMODATION

- BREEAM rating: Very Good
- Comfort cooling
- Private offices and meeting rooms
- Kitchen facility
- Raised access floors
- Suspended ceilings with LG7 lighting
- 16 car parking spaces





## GROUND FLOOR



5,102 SQ FT (473.98 SQ M)



MEETING ROOM



KITCHEN



Sat Nav: **L24 8RF**

Station	Travel Time
Manchester	35 mins
Chester	45 mins
Southport	45 mins
Leeds	1 hr 45 mins
London Euston	2 hrs

## ESTUARY

Country Walks

This is a location that offers all the amenities you might expect from a master-planned business park, including: Hotels, restaurants, a David Lloyd health and fitness centre, day-care nursery and one of Europe's most successful shopping parks (New Mersey). Neighbouring businesses include Littlewoods, HBOS, Lloyds Banking Group, Riverside Housing and Kier.

Transport connectivity is excellent; with frequent bus services to the city centre and suburbs, Liverpool South Parkway Transport Interchange is just five minutes away by shuttle bus, international flights from Liverpool are on your doorstep and Manchester Airport is an easy 45 minutes by road. Expressways link to the M62 and M56 – both within a ten minute drive.

## Terms

Offices will be offered on an effective full repairing and insuring basis with flexible terms and packages available. To discuss specific requirements please contact the agents.

## Get in Touch

For further information about the available office accommodation or to arrange a viewing, please contact the sole agents.

Neil Kirkham

T: 0151 471 4933 E: Neil.Kirkham@cbre.com

Mark Worthington

T: 0151 230 1130 E: mark@worthingtonowen.com

