

# ON BEHALF OF THE COURT APPOINTED RECEIVER

## TWO BED APARTMENT

Flat 1, 2 Thames Avenue, Windsor,  
SL4 1QP

**Asking £600,000**

### Property Features

- 🏠 Apartment
- 🛏 2 bedrooms
- 📏 1,192 sq. ft.
- 🚿 2 bathrooms
- 📍 Desirable location in  
the heart of Windsor

### CONTACTS

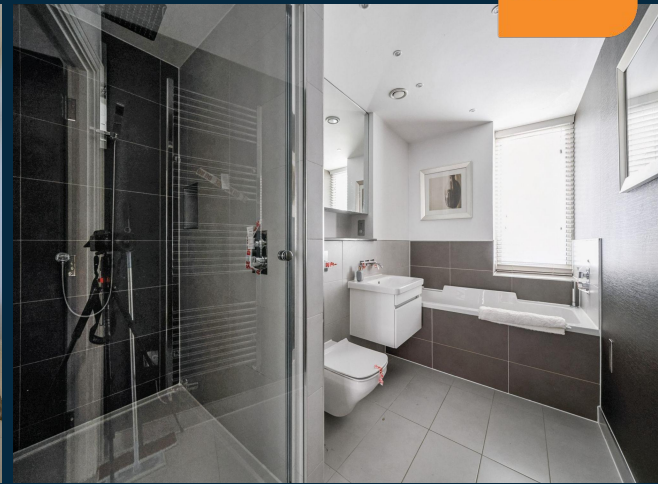
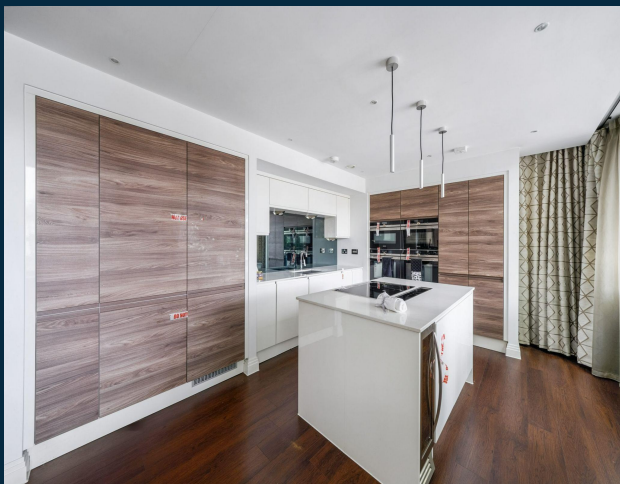
**Amy Selfe**

T: 0161 710 2010

E: [amy.selfe@landwoodgroup.com](mailto:amy.selfe@landwoodgroup.com)

LANDWOOD  
GROUP





**Flat 1, 2 Thames Avenue, Windsor, SL4 1QP**

## DESCRIPTION

The flat is set within a multi storey converted development which is complete with intercom entry and lift access.

Located on the first floor, the flat provides a spacious open plan living/dining/kitchen area with the kitchen having high gloss units and a central island. The flat also offers two bedrooms, one with an ensuite shower room, plus a family bathroom. The finish of the property is modern and stylish with tiled bathrooms, wood flooring to the living area and carpets to the bedrooms. The flat is ideal to move into immediately.



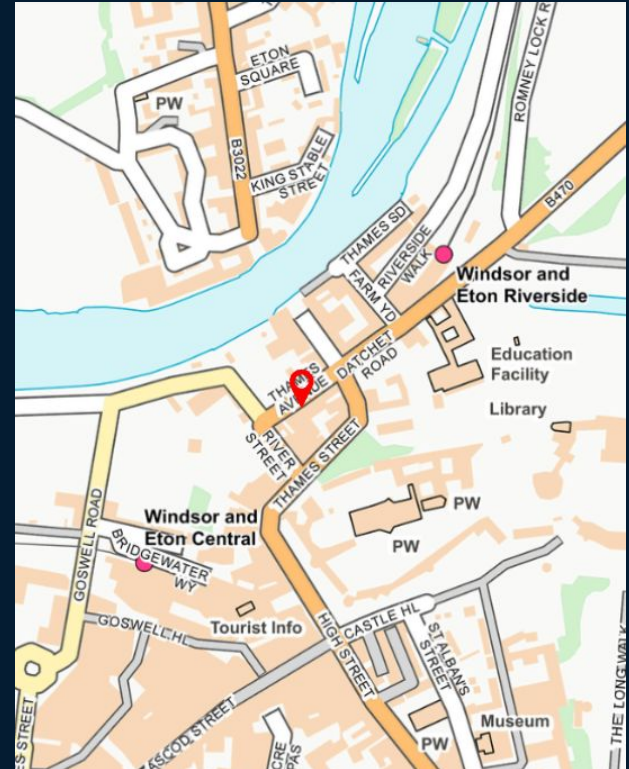
# Settle into Your SURROUNDINGS

## LOCATION

The property is located in the heart of Windsor, located on the edge of the River Thames.

The surrounding area is mixed use with both residential and commercial properties nearby. There are number of apartment buildings are close by amongst restaurants, local shops and tourist attractions.

Windsor Castle, the River Thames and the closest railway station are all within circa 300m from the property. Services to London Paddington take around 30 minutes from the Windsor and Eton Central making the area ideal for commuters.



## TENURE INFORMATION

The property is held leasehold title number BK477295. The lease is for a term of 125 years from July 2015 and there are 115 years remaining.

## ACCOMMODATION

Gross internal Area: 1,192 sq. ft. (111 sq.m)

## EPC

D

## COUNCIL TAX

Band F – Annual Charge for 2025/2026 is £2,661.67.

## PRICE

Seeking offers in the region of £600,000.

## LEGAL COSTS

Each party will be responsible for their own legal costs.

## VIEWINGS

Strictly by appointment.

## CONTACT US TO ENQUIRE



### AMY SELFIE

Associate Director

T: 0161 967 0122

E: [amy.selfe@landwoodgroup.com](mailto:amy.selfe@landwoodgroup.com)

L: Lancaster Buildings, 77 Deansgate, Manchester,  
M3 2BW

Landwood Commercial (Manchester) Ltd for themselves and for the Vendors or Lessors of this property, whose agents they are, give notice that: 1) The information contained within these particulars has been checked and is understood to be materially correct at the date of publication; 2) All descriptions, statements, dimensions, references to condition and permissions for the use and occupation or other details are given in good faith; however, they are made without responsibility and should not be relied upon as representation of fact, intended purchasers or lessors should, by enquiry to our Manchester office, satisfy themselves as to the corrections and availability, in each case, before arrangements are made to view (if the site comprises of buildings); 3) Unless otherwise stated, all prices rents and other charges are quoted exclusive of Value Added Tax (VAT). Any intended purchasers or tenants must satisfy themselves independently as to the incidence of VAT in respect of any transaction; 4) All plant, machinery, equipment, services and fixtures and fittings referred to in these particulars were present at the date of publication. They have not, however, been tested and therefore we give absolutely no warranty as to their condition or operation; 5) These particulars do not constitute part of an offer or contract; 6) The vendors or lessors do not make or give – and neither do Landwood Commercial (Manchester) Ltd, nor any person in their employment have any authority to make or give – any representation or warranty whatsoever in relation to this property.