



Connells

Ashted Drive
Bapchild Sittingbourne

Ashtead Drive Bapchild Sittingbourne ME9 9NF

for sale offers in excess of
£400,000



Property Description

A beautifully presented, three bedroom, family home set in the sought after village of Bapchild. The property is placed at the end of a no through road with fields and countryside nearby and still provides easy access to the main roads with links to Sittingbourne and Faversham.

Bapchild Primary school and pre school are moments walk away, there are local stores to the main road and superstores a further drive away in to Sittingbourne.

The home has been extended to provide a wonderful space for all the family including a modern fitted kitchen, dining room with double doors overlooking the garden and a generous lounge with feature fire place.

The first floor comprises three doubles, the third of which also includes a walk in storage room and further room under the eaves. There is a family bathroom with modern finish to include a bath, WC and wash hand basin, There is also a separate WC, ideal for a larger family.

To the outside, the property enjoys a front lawned garden off road parking for two cars on a driveway with access to an integrated garage, fully powered with plenty of storage space. There is a lawned rear garden with patio area, surrounded by mature trees and shrubs.

Internal viewings are highly recommended to enjoy all this property has to offer.



Entrance Hall

Door to Front

Lounge

14' 4" x 10' 11" (4.37m x 3.33m)

Window to front, carpet, radiator. gas fire with mantle piece.

Dining Room

14' 3" x 10' 7" (4.34m x 3.23m)

Double doors to rear. Carpet, radiator.

Kitchen

13' 11" x 10' 6" (4.24m x 3.20m)

Window. Fitted kitchen with wall & base units, space for dishwasher, washing machine and fridge/freezer. 1 1/2 sink and drainer. Oven/grill and gas hob.

First Floor Landing

Access to loft. Boiler cupboard. Carpet.

Bedroom One

10' 8" x 11' 1" (3.25m x 3.38m)

Window, built in wardrobe. Radiator. Carpet.

Bedroom Two

12' 11" x 11' 1" (3.94m x 3.38m)

Window. Built in wardrobe.

Bedroom Three

12' 2" Max x 13' 1" Max (3.71m Max x 3.99m Max)

Family Bathroom

Window. Suite of: WC, washbasin and bath with a duel headed shower. Towel Rail. Tiled floor and walls.

Separate Wc

WC.

Garage

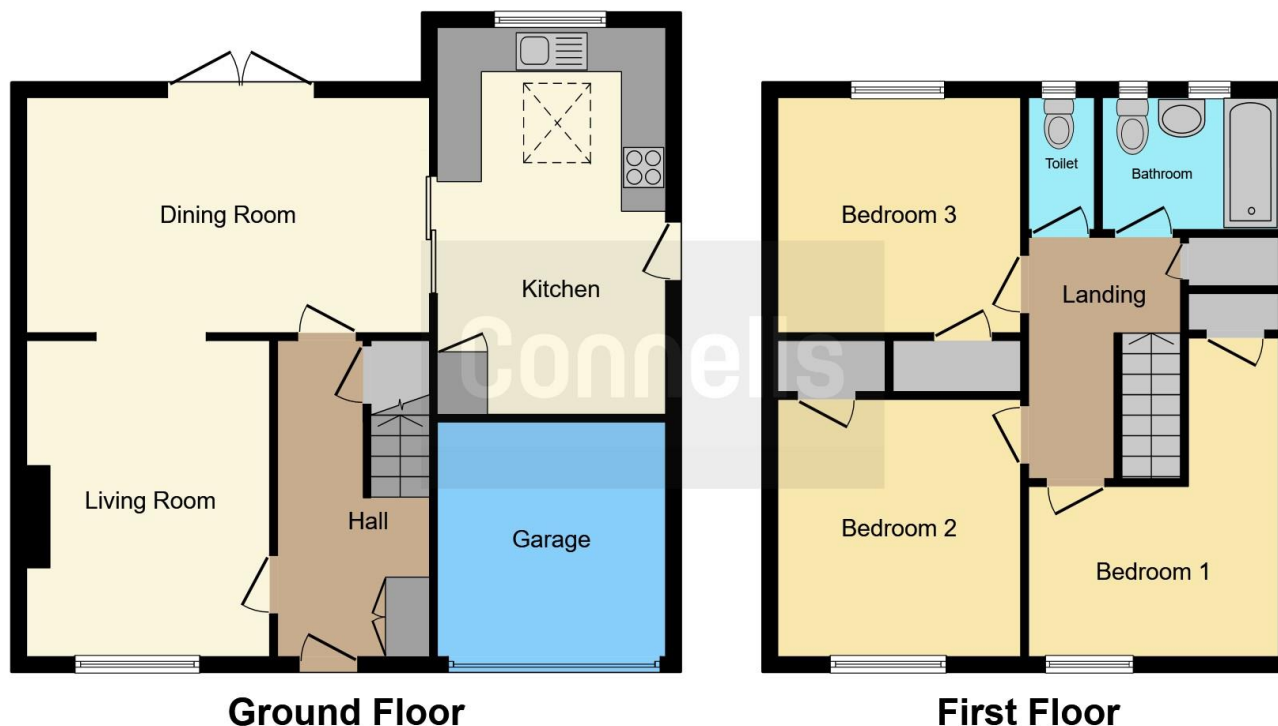
17' x 7' 11" (5.18m x 2.41m)

Double doors with power & light.









This floor plan is for illustrative purposes only. It is not drawn to scale. Any measurements, floor areas (including any total floor area), openings and orientation are approximate. No details are guaranteed, they cannot be relied upon for any purpose and they do not form part of any agreement. No liability is taken for any error, omission or misstatement. A party must rely upon its own inspection(s). Powered by www.focalagent.com

To view this property please contact Connells on

T 01795 477859
E sittingbourne@connells.co.uk

68 High Street
 SITTINGBOURNE ME10 4PB

EPC Rating: D Council Tax
 Band: D

Tenure: Freehold

view this property online connells.co.uk/Property/SIT103842



1. MONEY LAUNDERING REGULATIONS Intending purchasers will be asked to produce identification documentation at a later stage and we would ask for your co-operation in order that there will be no delay in agreeing the sale. 2. These particulars do not constitute part or all of an offer or contract. 3. The measurements indicated are supplied for guidance only and as such must be considered incorrect. Potential buyers are advised to recheck measurements before committing to any expense. 4. We have not tested any apparatus, equipment, fixtures, fittings or services and it is in the buyers interest to check the working condition of any appliances.

Connells Residential is registered in England and Wales under company number 1489613, Registered Office is Cumbria House, 16-20 Hockliffe Street, Leighton Buzzard, Bedfordshire, LU7 1GN. VAT Registration Number is 500 2481 05.

See all our properties at www.connells.co.uk | www.rightmove.co.uk | www.zoopla.co.uk

Property Ref: SIT103842 - 0007