



Connells

School Lane
Lower Halstow Sittingbourne

School Lane Lower Halstow Sittingbourne ME9 7ET

for sale offers in excess of
£425,000



Property Description

£425,000- £450,000 -

Step inside this Bungalow and you will be Impressed by the size of the accommodation its offers!

The Lounge is a lovely, welcoming space to relax or spend times with friends and family.

The Kitchen is spacious with a range of gloss units, integrated dishwasher and benefits from a built in Oven and Hob with the added benefit of a hot tap.

There is also a built-in dining/breakfast table that reflects the worktops for added style.

Set off with High Quality Flooring this Kitchen really is the Hub of the home.

There are 2 Double Bedrooms that are bright and airy.

The Family Bathroom is a good size with attractive sanitary ware.

The Rear Garden enjoys a large space and is perfect for entertaining or enjoying the peace of Village life.

To the rear of the property, you access the garage and additional parking this property offers.

This property must be viewed to appreciate all it offers and the lifestyle you can enjoy.



Entrance Hall

23' 6" x 8' 2" extending to (7.16m x 2.49m extending to)

Lounge/Diner

20' 10" x 13' 11" (6.35m x 4.24m)

Kitchen

18' 10" x 11' 7" (5.74m x 3.53m)

Master Bedroom

11' 8" x 10' 6" (3.56m x 3.20m)

Bedroom 2

11' 5" x 10' 6" (3.48m x 3.20m)

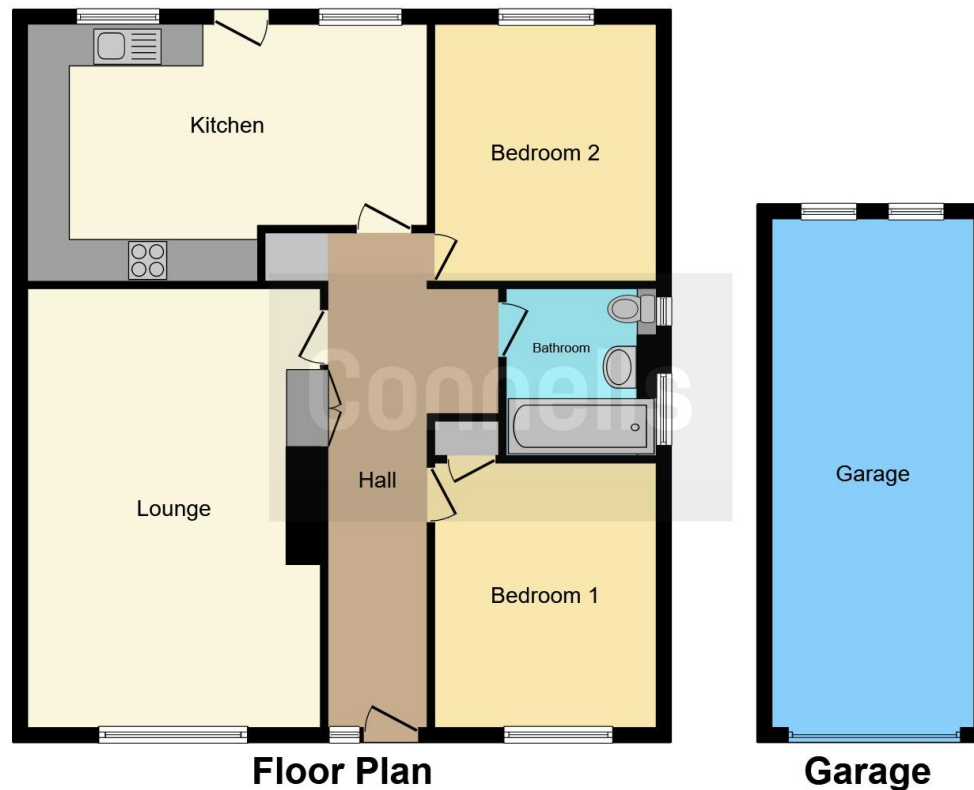
Family Bathroom

7' 10" x 6' (2.39m x 1.83m)









This floor plan is for illustrative purposes only. It is not drawn to scale. Any measurements, floor areas (including any total floor area), openings and orientation are approximate. No details are guaranteed, they cannot be relied upon for any purpose and they do not form part of any agreement. No liability is taken for any error, omission or misstatement. A party must rely upon its own inspection(s). Powered by www.focalagent.com

To view this property please contact Connells on

T 01795 477859
E sittingbourne@connells.co.uk

68 High Street
 SITTINGBOURNE ME10 4PB

EPC Rating: D

view this property online connells.co.uk/Property/SIT103428

Tenure: Freehold



1. MONEY LAUNDERING REGULATIONS Intending purchasers will be asked to produce identification documentation at a later stage and we would ask for your co-operation in order that there will be no delay in agreeing the sale. 2. These particulars do not constitute part or all of an offer or contract. 3. The measurements indicated are supplied for guidance only and as such must be considered incorrect. Potential buyers are advised to recheck measurements before committing to any expense. 4. We have not tested any apparatus, equipment, fixtures, fittings or services and it is in the buyers interest to check the working condition of any appliances.

Connells Residential is registered in England and Wales under company number 1489613, Registered Office is Cumbria House, 16-20 Hockliffe Street, Leighton Buzzard, Bedfordshire, LU7 1GN. VAT Registration Number is 500 2481 05.

See all our properties at www.connells.co.uk | www.rightmove.co.uk | www.zoopla.co.uk

Property Ref: SIT103428 - 0004