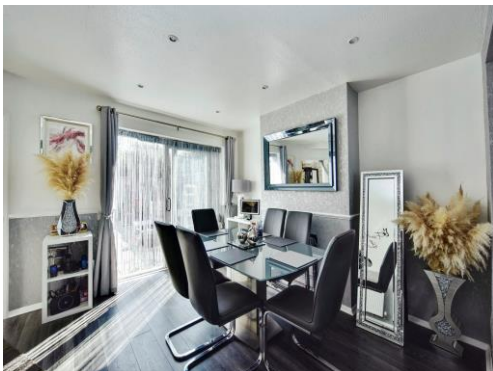




Connells

Vincent Gardens
Sheerness



Property Description

Step inside this property and you will be WOWED by its Decor and Presentation!

The Kitchen is a well- planned space with a Range of Fitted Units lovely worktops and the additional Benefit of a Built in Oven and Hob.

The Spacious Lounge/Diner is Open Plan and gives a feeling of a welcoming space perfect for relaxing or entertaining family and friends.

Upstairs there are 3 beautifully decorated Bedrooms with the Master being a generous size the Second a Double and the Third also a good size.

The Family Bathroom is well designed with built in storage and also has the Stunning Decor that features throughout this property.

The Attractive Rear Garden is a lovely space to relax in, Family friendly and excellent for Entertaining.

This Property must be viewed to Appreciate the Size and Standard of the Accommodation it Offers.

Lounge/Dining Room

24' 4" x 13' 8" (7.42m x 4.17m)

Kitchen

11' x 5' 8" (3.35m x 1.73m)

Bedroom 1

11' 9" x 10' 8" (3.58m x 3.25m)

Bedroom 2

11' 11" x 9' 6" (3.63m x 2.90m)

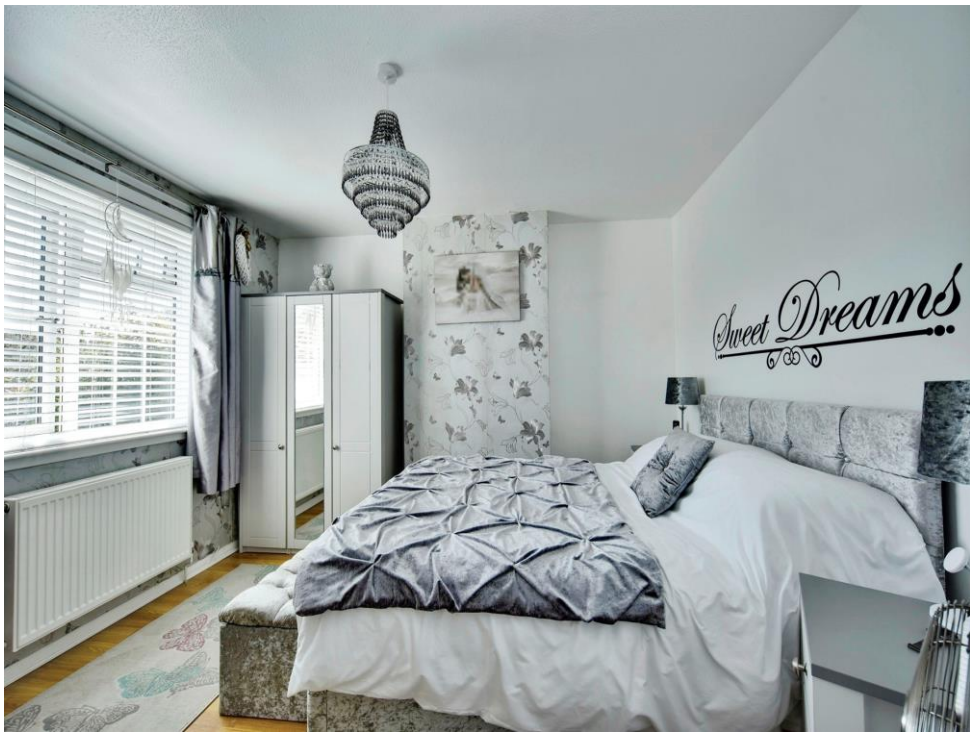
Bedroom 3

11' 8" x 6' 9" (3.56m x 2.06m)

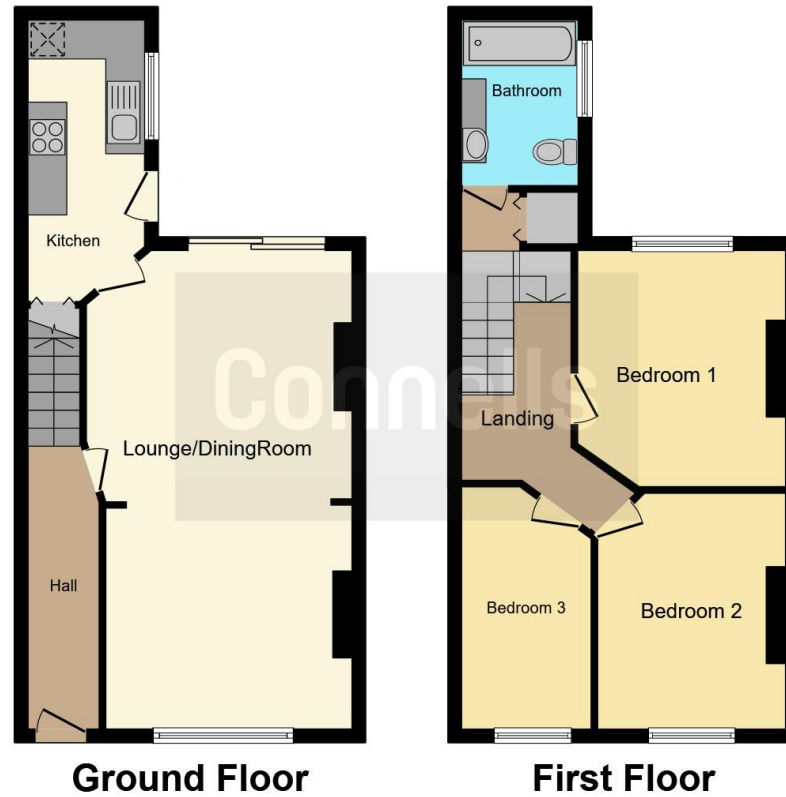
Bathroom

8' 6" x 5' 7" (2.59m x 1.70m)









This floor plan is for illustrative purposes only. It is not drawn to scale. Any measurements, floor areas (including any total floor area), openings and orientation are approximate. No details are guaranteed, they cannot be relied upon for any purpose and they do not form part of any agreement. No liability is taken for any error, omission or misstatement. A party must rely upon its own inspection(s). Powered by www.focalagent.com

To view this property please contact Connells on

T 01795 477859
E sittingbourne@connells.co.uk

68 High Street
 SITTINGBOURNE ME10 4PB

EPC Rating: D

Tenure: Freehold

view this property online connells.co.uk/Property/SIT103379



1. MONEY LAUNDERING REGULATIONS Intending purchasers will be asked to produce identification documentation at a later stage and we would ask for your co-operation in order that there will be no delay in agreeing the sale. 2. These particulars do not constitute part or all of an offer or contract. 3. The measurements indicated are supplied for guidance only and as such must be considered incorrect. Potential buyers are advised to recheck measurements before committing to any expense. 4. We have not tested any apparatus, equipment, fixtures, fittings or services and it is in the buyers interest to check the working condition of any appliances.

Connells Residential is registered in England and Wales under company number 1489613, Registered Office is Cumbria House, 16-20 Hockliffe Street, Leighton Buzzard, Bedfordshire, LU7 1GN. VAT Registration Number is 500 2481 05.

See all our properties at www.connells.co.uk | www.rightmove.co.uk | www.zoopla.co.uk

Property Ref: SIT103379 - 0003