



Connells

Blossom Street
Bapchild Sittingbourne



Property Description

Connells are proud to present to the market this stunning two bedroom semi-detached home in Blossom Street in Bapchild on the outskirts of Sittingbourne.

Accommodation is set over two floors with the ground floor comprising of a bright and airy entrance hall with a downstairs cloakroom. The stylish, fully fitted kitchen is set towards the front of the house and the lounge can be found to the rear and provides direct access to the private rear garden. Both bedrooms are great sized double bedrooms and can be found on the first floor along with the family bathroom.

Blossom Street can be found in Bapchild which is just a short drive from Sittingbourne and provides easy access to Canterbury and Ashford with both reachable within 20 minutes. Bapchild also offers great schools, local shops and fantastic transport links.

For your chance to view, please call the sole agent Connells before it's too late.

Cloakroom

5' 3" x 2' 10" (1.60m x 0.86m)

Lounge

14' 5" x 14' 9" (4.39m x 4.50m)

Kitchen

10' 5" x 7' (3.17m x 2.13m)

Bedroom 1

12' 7" x 8' 5" (3.84m x 2.57m)

Bedroom 2

14' 5" x 9' 6" (4.39m x 2.90m)

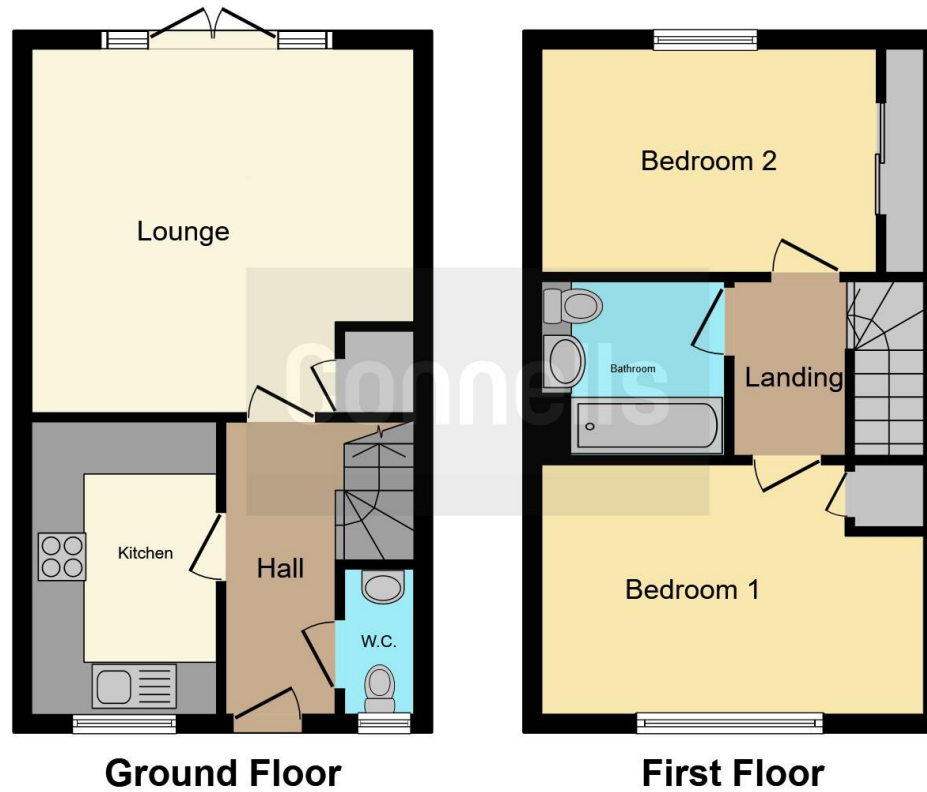
Bathroom

6' 9" x 6' 11" (2.06m x 2.11m)









This floor plan is for illustrative purposes only. It is not drawn to scale. Any measurements, floor areas (including any total floor area), openings and orientation are approximate. No details are guaranteed, they cannot be relied upon for any purpose and they do not form part of any agreement. No liability is taken for any error, omission or misstatement. A party must rely upon its own inspection(s). Powered by www.focalagent.com

To view this property please contact Connells on

T 01795 477859
E sittingbourne@connells.co.uk

68 High Street
 SITTINGBOURNE ME10 4PB

EPC Rating: B

view this property online connells.co.uk/Property/SIT103397

Tenure: Freehold



1. MONEY LAUNDERING REGULATIONS Intending purchasers will be asked to produce identification documentation at a later stage and we would ask for your co-operation in order that there will be no delay in agreeing the sale. 2. These particulars do not constitute part or all of an offer or contract. 3. The measurements indicated are supplied for guidance only and as such must be considered incorrect. Potential buyers are advised to recheck measurements before committing to any expense. 4. We have not tested any apparatus, equipment, fixtures, fittings or services and it is in the buyers interest to check the working condition of any appliances.

Connells Residential is registered in England and Wales under company number 1489613, Registered Office is Cumbria House, 16-20 Hockliffe Street, Leighton Buzzard, Bedfordshire, LU7 1GN. VAT Registration Number is 500 2481 05.

See all our properties at www.connells.co.uk | www.rightmove.co.uk | www.zoopla.co.uk

Property Ref: SIT103397 - 0003