



**Connells**

Victoria Street  
Sheerness





### Property Description

This Great Home has so much to offer to the discerning buyer, with off road parking and close to local amenities and schools it must be viewed to appreciate the accommodation on offer.

The Lounge Diner is spacious and a great place for relaxing with family and friends.

The kitchen has a range of stylish units and leads to the Garden which is a very large outside space.

Upstairs you have 3 Bedrooms and a Family Bathroom with Walk in Shower.

The Garden is a splendid place to entertain family and friends who will be Wowed by the Garden Room with its Bar and Entertainment area.

Definitely a property to put on your viewing list if you're a Family or First Time Buyers!



**Entrance Hall**

15' 2" x 3' 7" ( 4.62m x 1.09m )

**Lounge/Dining Room**

24' x 13' 2" ( 7.32m x 4.01m )

**Kitchen**

14' 4" x 5' 10" ( 4.37m x 1.78m )

**Bedroom 1**

15' 10" x 9' 4" ( 4.83m x 2.84m )

**Bedroom 2**

10' 9" x 8' 1" ( 3.28m x 2.46m )

**Bedroom 3**

12' 1" x 6' 9" ( 3.68m x 2.06m )

**Bathroom**

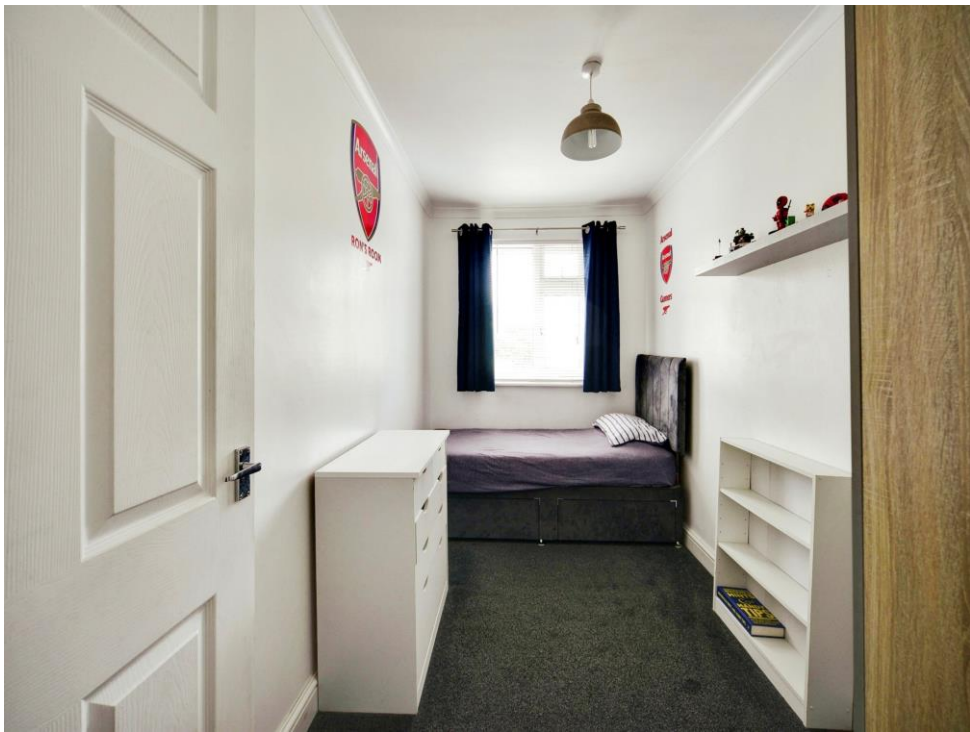
11' 5" x 5' 9" ( 3.48m x 1.75m )

**Garden Room/Bar**

20' 8" x 11' 8" ( 6.30m x 3.56m )













This floor plan is for illustrative purposes only. It is not drawn to scale. Any measurements, floor areas (including any total floor area), openings and orientation are approximate. No details are guaranteed, they cannot be relied upon for any purpose and they do not form part of any agreement. No liability is taken for any error, omission or misstatement. A party must rely upon its own inspection(s). Powered by [www.focalagent.com](http://www.focalagent.com)

To view this property please contact Connells on

**T 01795 477859**  
**E [sittingbourne@connells.co.uk](mailto:sittingbourne@connells.co.uk)**

68 High Street  
 SITTINGBOURNE ME10 4PB

**EPC Rating: C**

Tenure: Freehold

**view this property online [connells.co.uk/Property/SIT103255](http://connells.co.uk/Property/SIT103255)**



1. MONEY LAUNDERING REGULATIONS Intending purchasers will be asked to produce identification documentation at a later stage and we would ask for your co-operation in order that there will be no delay in agreeing the sale. 2. These particulars do not constitute part or all of an offer or contract. 3. The measurements indicated are supplied for guidance only and as such must be considered incorrect. Potential buyers are advised to recheck measurements before committing to any expense. 4. We have not tested any apparatus, equipment, fixtures, fittings or services and it is in the buyers interest to check the working condition of any appliances.

Connells Residential is registered in England and Wales under company number 1489613, Registered Office is Cumbria House, 16-20 Hockliffe Street, Leighton Buzzard, Bedfordshire, LU7 1GN. VAT Registration Number is 500 2481 05.

**See all our properties at [www.connells.co.uk](http://www.connells.co.uk) | [www.rightmove.co.uk](http://www.rightmove.co.uk) | [www.zoopla.co.uk](http://www.zoopla.co.uk)**

Property Ref: SIT103255 - 0004