



Connells

Field View Queenborough Road
Minster On Sea SHEERNESS

Field View Queenborough Road Minster On Sea SHEERNESS ME12 3DF

for sale guide price
£475,000



Property Description

This property really must be viewed to appreciate the size and standard of accommodation it offers.

In a popular location and with the versatility of the separate 2 Bedroom Detached Annexe this offers extra living space for a growing family or a separate home for elderly relatives or young adults looking for their own space, it also offers the opportunity to achieve extra income from letting the annexe.

Step into this property and you have a spacious hallway from which the accommodation flows perfectly, to a good- sized Kitchen with a range of units which leads to a large extension perfect for storage or a separate work area.

The Lounge/Diner is a pleasant area for relaxing or entertaining, leading to a lovely conservatory which overlooks a pleasant Garden.

Upstairs you have 2 Bathrooms and 3 Comfortable Bedrooms with the 4th Bedroom being on the ground floor this also offers flexible accommodation.

The Gated Driveway for both properties offer parking for several cars.



Lounge

26' 9" x 13' 7" (8.15m x 4.14m)

Kitchen

11' 2" x 9' 10" (3.40m x 3.00m)

Conservatory

11' 9" x 11' 4" (3.58m x 3.45m)

Side Room

19' x 6' 3" (5.79m x 1.91m)

Dressing Room

7' 4" x 6' 3" (2.24m x 1.91m)

Bedroom 1

13' 1" x 11' 9" (3.99m x 3.58m)

Ensuite

5' 2" x 6' 6" (1.57m x 1.98m)

Bedroom 2

9' 6" x 7' 9" (2.90m x 2.36m)

Bedroom 3

10' x 9' (3.05m x 2.74m)

Bedroom 4/Utilitiy

10' 1" x 10' 4" (3.07m x 3.15m)

Bathroom

10' 4" x 5' 7" (3.15m x 1.70m)

Annexe Lounge

12' 3" x 9' 7" (3.73m x 2.92m)

Annexe Kitchen

12' 1" x 12' 5" (3.68m x 3.78m)

Annexe Bedroom 1

9' 4" x 7' 5" (2.84m x 2.26m)

Annexe Bedroom 2

8' 6" x 6' (2.59m x 1.83m)

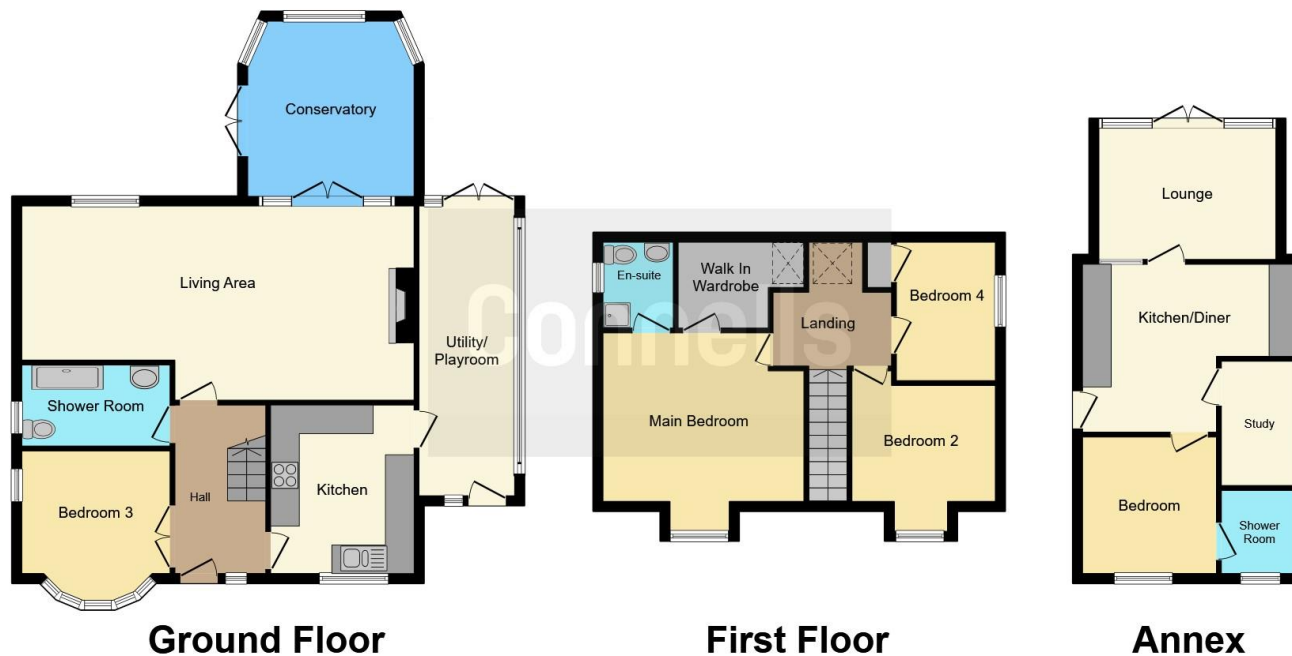
Annexe Shower Room

5' 8" x 6' 10" (1.73m x 2.08m)









This floor plan is for illustrative purposes only. It is not drawn to scale. Any measurements, floor areas (including any total floor area), openings and orientation are approximate. No details are guaranteed, they cannot be relied upon for any purpose and they do not form part of any agreement. No liability is taken for any error, omission or misstatement. A party must rely upon its own inspection(s). Powered by www.focalagent.com

To view this property please contact Connells on

T 01795 477859
E sittingbourne@connells.co.uk

68 High Street
 SITTINGBOURNE ME10 4PB

EPC Rating: C

view this property online connells.co.uk/Property/SIT103339

Tenure: Freehold



1. MONEY LAUNDERING REGULATIONS Intending purchasers will be asked to produce identification documentation at a later stage and we would ask for your co-operation in order that there will be no delay in agreeing the sale. 2. These particulars do not constitute part or all of an offer or contract. 3. The measurements indicated are supplied for guidance only and as such must be considered incorrect. Potential buyers are advised to recheck measurements before committing to any expense. 4. We have not tested any apparatus, equipment, fixtures, fittings or services and it is in the buyers interest to check the working condition of any appliances.

Connells Residential is registered in England and Wales under company number 1489613, Registered Office is Cumbria House, 16-20 Hockliffe Street, Leighton Buzzard, Bedfordshire, LU7 1GN. VAT Registration Number is 500 2481 05.

See all our properties at www.connells.co.uk | www.rightmove.co.uk | www.zoopla.co.uk

Property Ref: SIT103339 - 0004