



Connells

Shortlands Road
Sittingbourne



Property Description

This 3 bedroom terraced home is a fantastic addition to the market. As you walk into the home you enter the porch which gives you space to kick off your shoes and hang up your coats. The lounge is an open plan lounge diner giving you plenty of living space before you walk through to the galley kitchen with a range of units. The rear garden is a manageable size and allows room to entertain guests and enough space for the kids to kick a ball around.

On the first floor there are two double bedrooms and a bathroom. The home has been extended creating second floor to which gives you another bedroom which is a brilliant size.

The home is situated in a convenient part of town within walking distance of Sittingbourne town centre. The home is close to local amenities and is a short walk from the mainline railway station making this area popular with commuters. The home is ideal for first time buyers and a great investment for those looking to explore the buy to let market.



Entrance Porch

5' 1" x 2' 9" (1.55m x 0.84m)

Lounge

27' 5" x 11' 11" (8.36m x 3.63m)

Kitchen

15' 10" x 7' 6" (4.83m x 2.29m)

Bedroom 1

12' 1" x 12' 1" (3.68m x 3.68m)

Bedroom 2

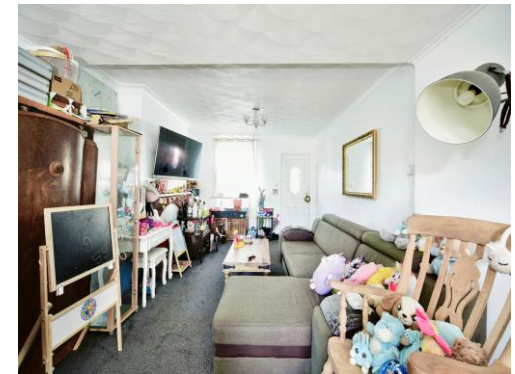
11' 11" x 8' 8" (3.63m x 2.64m)

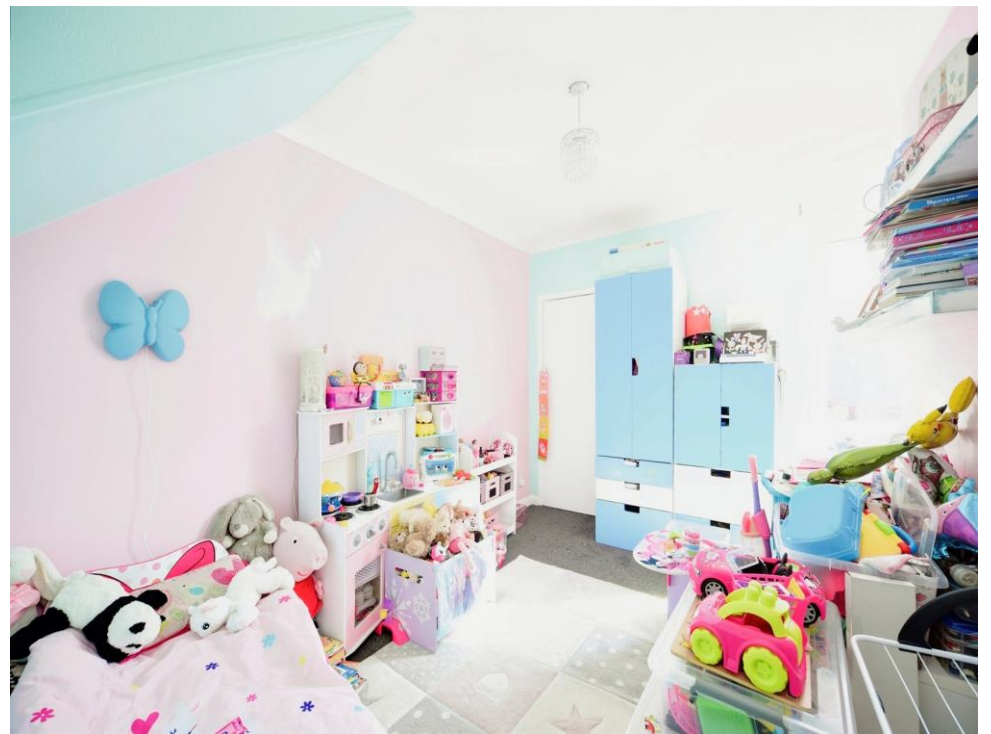
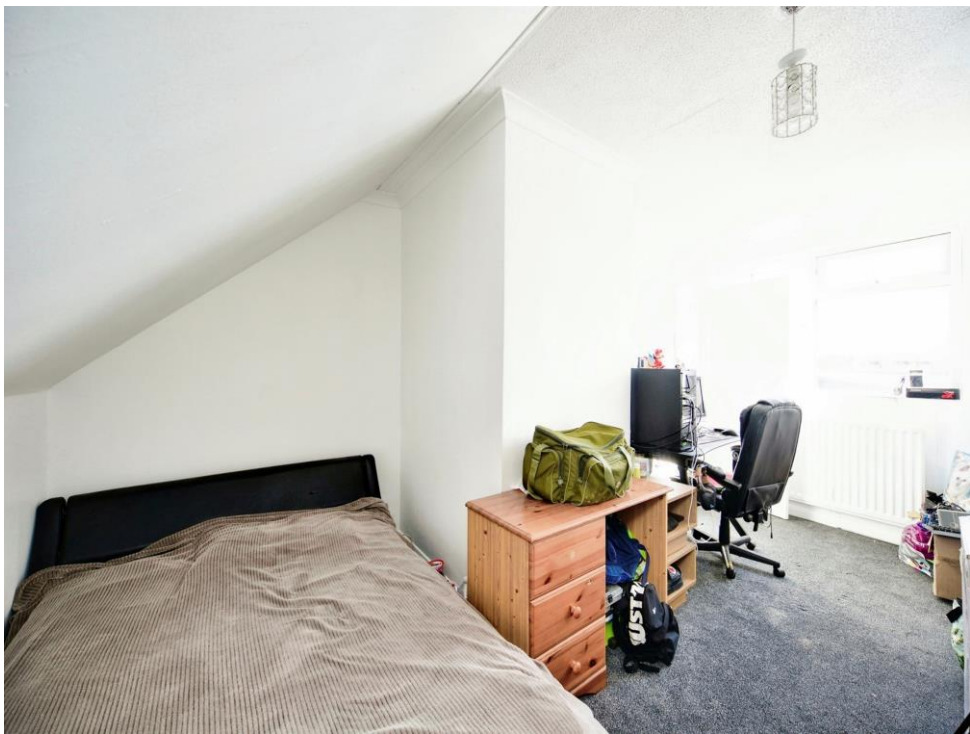
Bedroom 3

6' x 16' 3" (1.83m x 4.95m)

Bathroom

10' x 6' 10" (3.05m x 2.08m)









This floor plan is for illustrative purposes only. It is not drawn to scale. Any measurements, floor areas (including any total floor area), openings and orientation are approximate. No details are guaranteed, they cannot be relied upon for any purpose and they do not form part of any agreement. No liability is taken for any error, omission or misstatement. A party must rely upon its own inspection(s). Powered by www.focalagent.com

To view this property please contact Connells on

T 01795 477859
E sittingbourne@connells.co.uk

68 High Street
 SITTINGBOURNE ME10 4PB

EPC Rating: D

Tenure: Freehold

view this property online connells.co.uk/Property/SIT103301



1. MONEY LAUNDERING REGULATIONS Intending purchasers will be asked to produce identification documentation at a later stage and we would ask for your co-operation in order that there will be no delay in agreeing the sale. 2. These particulars do not constitute part or all of an offer or contract. 3. The measurements indicated are supplied for guidance only and as such must be considered incorrect. Potential buyers are advised to recheck measurements before committing to any expense. 4. We have not tested any apparatus, equipment, fixtures, fittings or services and it is in the buyers interest to check the working condition of any appliances.

Connells Residential is registered in England and Wales under company number 1489613, Registered Office is Cumbria House, 16-20 Hockliffe Street, Leighton Buzzard, Bedfordshire, LU7 1GN. VAT Registration Number is 500 2481 05.

See all our properties at www.connells.co.uk | www.rightmove.co.uk | www.zoopla.co.uk

Property Ref: SIT103301 - 0004