



**Connells**

Harper Way  
Sittingbourne



### Property Description

This immaculately presented three bedroom detached family home should be at the very top of your viewing list. Located on the highly sought-after Heron Fields development this property boasts plenty of living accommodation throughout. Benefits include off road driveway parking to the front of the property, generous sized rear garden, open plan modern fitted kitchen/dining room, spacious lounge and a downstairs w/c. Upstairs boasts three good sized bedrooms with the master benefiting from ensuite shower room and the family bathroom. Call us today to arrange your viewing appointment!



## Cloakroom

## Lounge

15' 11" x 10' 10" ( 4.85m x 3.30m )

## Kitchen / Diner

11' 9" x 17' 9" ( 3.58m x 5.41m )

## Bedroom One

9' 10" x 14' 3" ( 3.00m x 4.34m )

## Ensuite

## Bedroom Two

10' x 11' ( 3.05m x 3.35m )

## Bedroom Three

11' x 7' 6" ( 3.35m x 2.29m )

## Bathroom

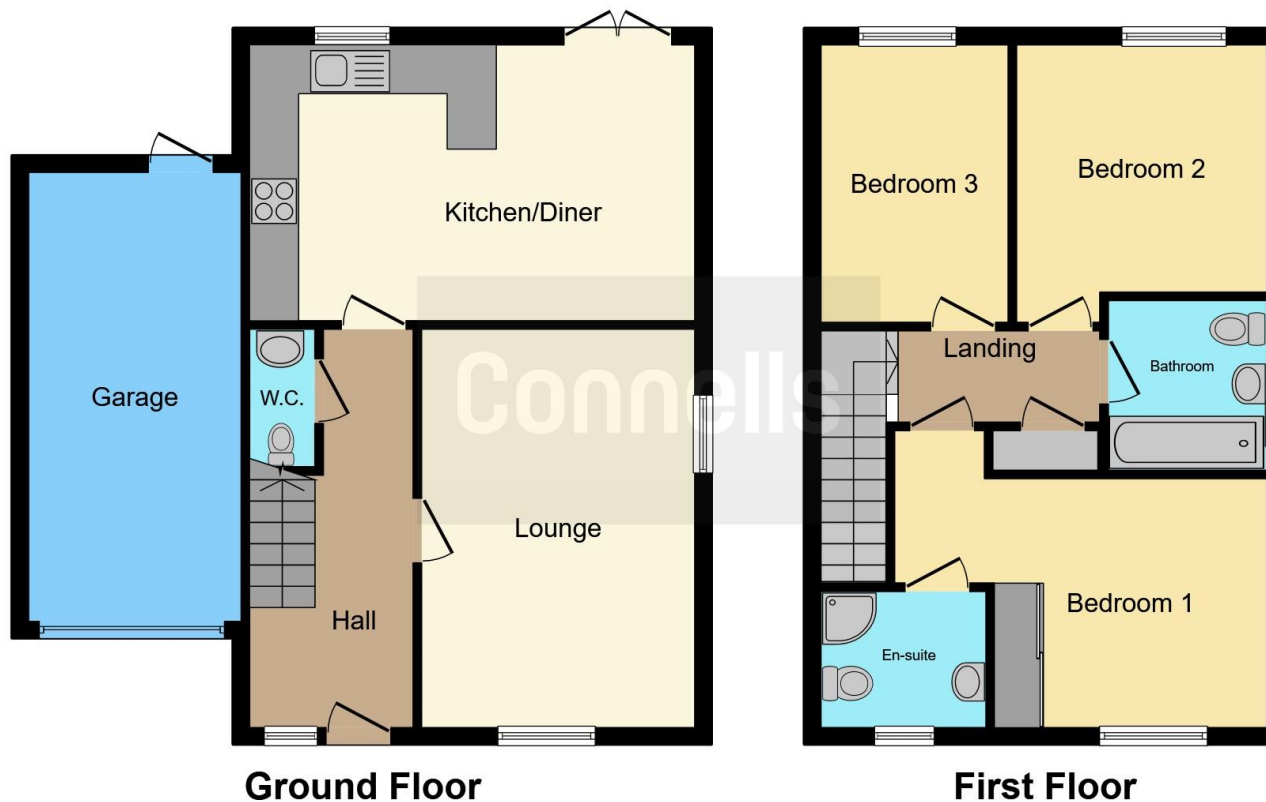
6' 9" x 6' 4" ( 2.06m x 1.93m )

## Garage









This floorplan is for illustrative purposes only and is not drawn to scale. Measurements, floor-areas, openings and orientations are approximate. They should not be relied upon for any purpose and do not form any part of an agreement. No liability is taken for any error or mis-statement. All parties must rely on their own inspections.

To view this property please contact Connells on

**T 01795 477859**  
**E [sittingbourne@connells.co.uk](mailto:sittingbourne@connells.co.uk)**

68 High Street  
 SITTINGBOURNE ME10 4PB

**EPC Rating: B**

Tenure: Freehold

**view this property online [connells.co.uk/Property/SIT103037](http://connells.co.uk/Property/SIT103037)**



1. MONEY LAUNDERING REGULATIONS Intending purchasers will be asked to produce identification documentation at a later stage and we would ask for your co-operation in order that there will be no delay in agreeing the sale. 2. These particulars do not constitute part or all of an offer or contract. 3. The measurements indicated are supplied for guidance only and as such must be considered incorrect. Potential buyers are advised to recheck measurements before committing to any expense. 4. We have not tested any apparatus, equipment, fixtures, fittings or services and it is in the buyers interest to check the working condition of any appliances.

Connells Residential is registered in England and Wales under company number 1489613, Registered Office is Cumbria House, 16-20 Hockliffe Street, Leighton Buzzard, Bedfordshire, LU7 1GN. VAT Registration Number is 500 2481 05.

**See all our properties at [www.connells.co.uk](http://www.connells.co.uk) | [www.rightmove.co.uk](http://www.rightmove.co.uk) | [www.zoopla.co.uk](http://www.zoopla.co.uk)**

Property Ref: SIT103037 - 0007