



**SARAH CLARK**  
PROPERTY CONSULTANTS

KINGS QUARTER APARTMENTS, CHARLES STREET,  
BRISTOL, BS1 3NN



## One-Bedroom Apartment – Kings Quarter, Bristol BS1

Situated within the popular Kings Quarter development, this contemporary one-bedroom apartment offers stylish city-centre living and is available to purchase on a 40% shared ownership basis, with the potential to acquire the remaining 60% from Brighter Places.

The property features a bright and spacious open-plan living area with a modern fitted kitchen, a generous double bedroom, and a sleek bathroom. Large windows allow plenty of natural light throughout, creating an inviting and airy feel. The building also benefits from secure entry and lift access for added convenience.

Perfectly positioned moments from Bristol's vibrant city centre, Kings Quarter offers easy access to shops, cafés, and transport links. Ideal for first-time buyers seeking modern living in a prime location.

Approximate Additional Charges:  
Shared Ownership Rent\* – £190.16  
Service Charge Inc Ground Rent – £191.17

Financials:  
Full Market Value: £205,000  
Share for Sale (40%): £82,000  
Retained Share (Brighter Places): 60%  
Lease Length: 99 years from 2007  
Tax Band: B



### Features

- 40% shared ownership
- Bright and spacious open-plan living area
- Contemporary fitted kitchen
- Generous double bedroom
- Sleek modern bathroom
- Secure entry system and lift access
- Large storage space
- Ideal for first-time buyers



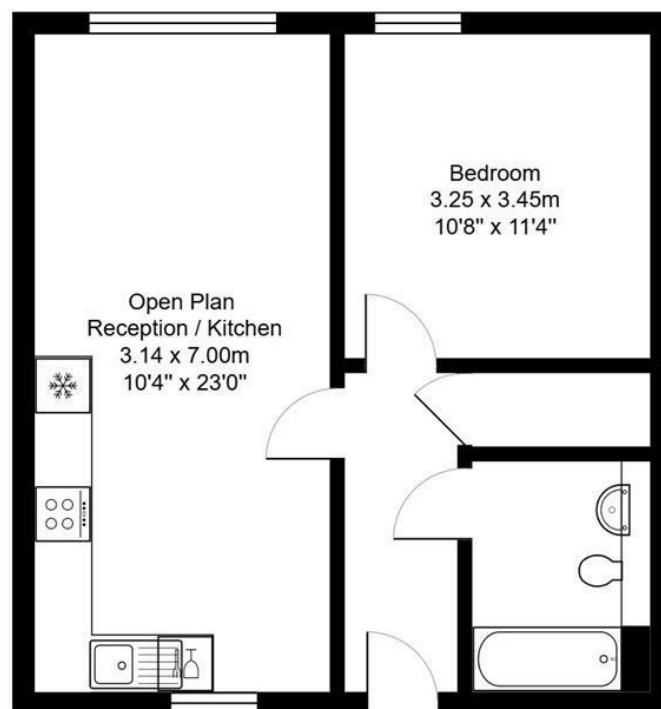




**TENURE**  
LEASEHOLD

**SERVICES**  
£161.17

**LOCAL AUTHORITY**

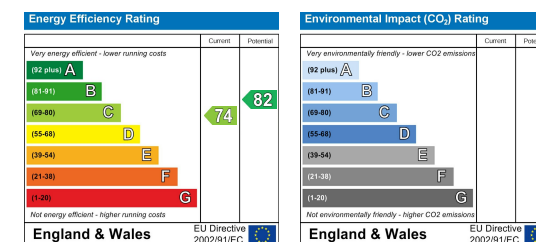


Second Floor



Total Area: 45.9 m<sup>2</sup> ... 494 ft<sup>2</sup>

All measurements of walls, doors, windows, fittings and appliances, their size and locations are approximate and cannot be regarded as being an accurate representation neither by the vendor nor their agent.  
[www.inovusproperty.co.uk](http://www.inovusproperty.co.uk)



IMPORTANT: we would like to inform prospective purchasers that these sales particulars have been prepared as a general guide only. A detailed survey has not been carried out, nor the services, appliances and fittings tested. Room sizes should not be relied upon for furnishing purposes and are approximate. If floor plans are included, they are for guidance only and illustration purposes only and may not be to scale. If there are any important matters likely to affect your decision to buy, please contact us before viewing the property.