



SARAH CLARK  
PROPERTY CONSULTANTS

GARDEN FLAT, 20 |  
BEAUFORT ROAD, CLIFTON, BS8 2JY



A beautifully presented two-bedroom garden flat, set in this handsome period property in the sought after area of Clifton. With a thoughtfully designed layout and a private and pretty rear garden, this property is ideal for those seeking a sophisticated home close to Clifton Village and the Downs.

The accommodation offers a combination of period elegance with modern design. The large bright lounge is situated to the rear of the property and is positioned to maximise the benefits of the rear garden, with french doors leading to the rear patio this is a lovely space for relaxing and entertaining.

The central hallway is large enough to be used as a dining hall or study area - enhancing the sense of space and flexibility.

The modern kitchen is fully equipped with a range of wall and base units for storage and has integrated appliances including, range cooker, dish washer, fridge and freezer and wine cooler. There is also an additional utility area outside.

The two bedrooms are situated to the front of the property and the master benefits a large bay overlooking the front garden. The second bedroom could also function well



## Features

- No Onward Chain
- Two Bedroom Apartment
- Private South Facing Rear Garden
- Modern Fully Equipped Kitchen
- Contemporary Shower Room
- Large Light Lounge
- Master Bedroom with Large Bay
- Clifton Location







### Lounge

17'7" x 19'7" (5.36 x 5.99)

The large bright lounge is situated to the rear of the property so that you can have maximum enjoyment of the garden. The large lounge is neutrally decorated with wooden flooring throughout.

### Kitchen

5'10" x 14'9" (1.79 x 4.51)

The modern kitchen is fully equipped with a range of wall and base units for storage and has integrated appliances including, range cooker, dish washer, fridge and freezer and wine cooler. There is also an additional utility area outside.

### Hall/Dining Room

15'3" x 7'10" (4.65 x 2.39)

This spacious area could be used as a dining hall or a useful home study area.

### Bedroom One

12'11" x 19'10" (3.96 x 6.07)

This magnificent bedroom has neutral decoration and carpet and benefits a bay window looking onto the front garden. There are two built-in storage cupboards.

### Bedroom Two

8'6" x 12'2" (2.61 x 3.72)

The second bedroom has neutral decoration and carpet throughout.

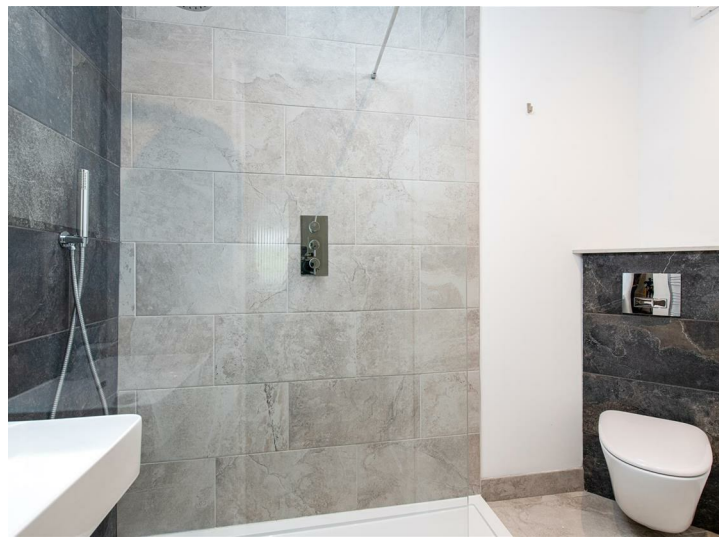
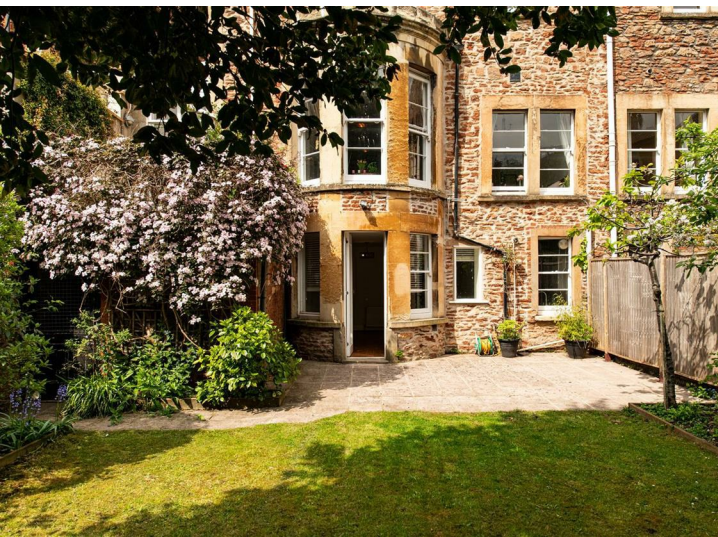
### Shower Room

The contemporary shower room has been finished to a high standard and has a walk-in rainfall shower, floating basin, wc with concealed cistern and modern tiling throughout.

### Outside

A pretty rear garden with a mix of lawn and patio areas and planted with apple and pear trees and mature shrubs.

There is also access to the utility area housing the washing machine and further communal storage area.



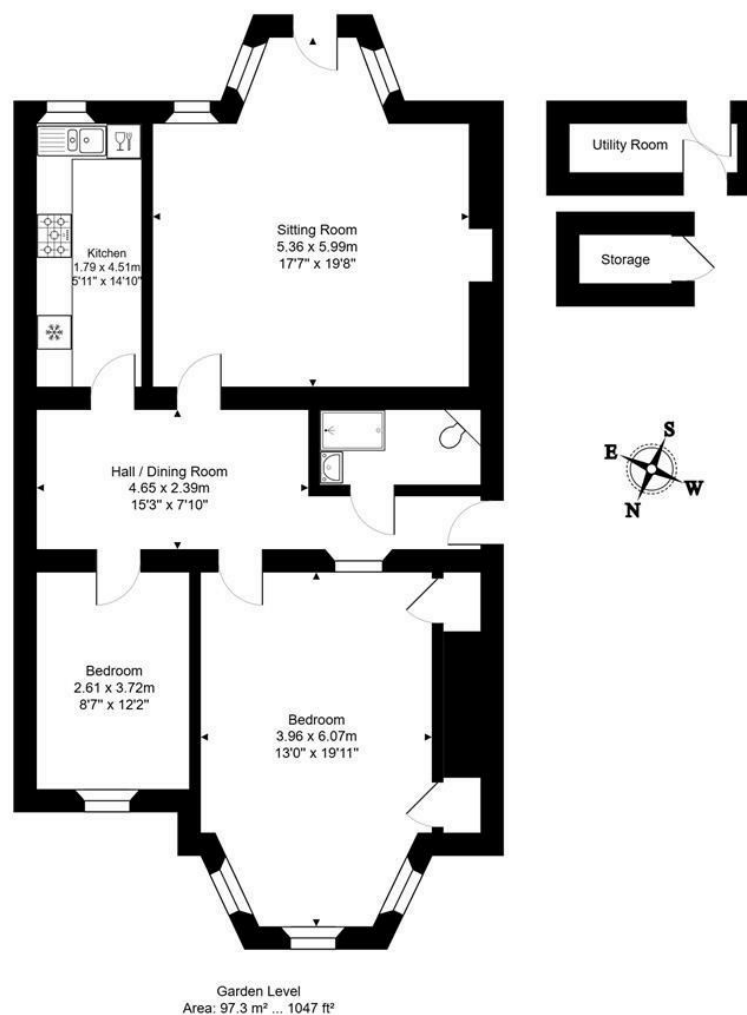
TENURE  
LEASEHOLD

SERVICES

Customise to type text here

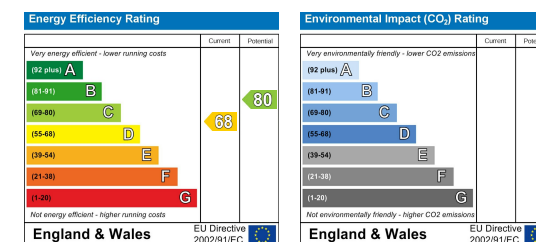
LOCAL AUTHORITY

Customise to type text here



Total Area: 101.0 m² ... 1087 ft²

All measurements of walls, doors, windows, fittings and appliances, their size and locations are approximate and cannot be regarded as being an accurate representation neither by the vendor nor their agent.  
[www.inovusproperty.co.uk](http://www.inovusproperty.co.uk)



IMPORTANT: we would like to inform prospective purchasers that these sales particulars have been prepared as a general guide only. A detailed survey has not been carried out, nor the services, appliances and fittings tested. Room sizes should not be relied upon for furnishing purposes and are approximate. If floor plans are included, they are for guidance only and illustration purposes only and may not be to scale. If there are any important matters likely to affect your decision to buy, please contact us before viewing the property.