



R Series 750 RT, Bates Wharf Marina
Chertsey, KT16 8LG

From £501,600

- Magnificent 2 double bedroom houseboat
- Fantastic open plan kitchen/living room
- Shower room
- Decked balcony and roof terrace

H₂O
HOMES



Redefine a lifestyle on the water with the magnificent 2 double bedroom R Series 750RT. This stunning houseboat is built to a high specification with all the creature comforts of a main home. Be blown away by the light infused rooms and superior finish of this houseboat with the added benefit of a fabulous 500sqft roof terrace. Moored in Bates Wharf marina the picturesque setting is superbly situated on the River Thames with the delightful nature reserve of Chertsey Meads on your doorstep and has easy transport links to both the M25 and M3.

ENTRANCE HALL

The inviting and spacious hallway is flooded with light from its striking angular windows. Here there is a large utility cupboard housing a washing machine and further storage cupboard.

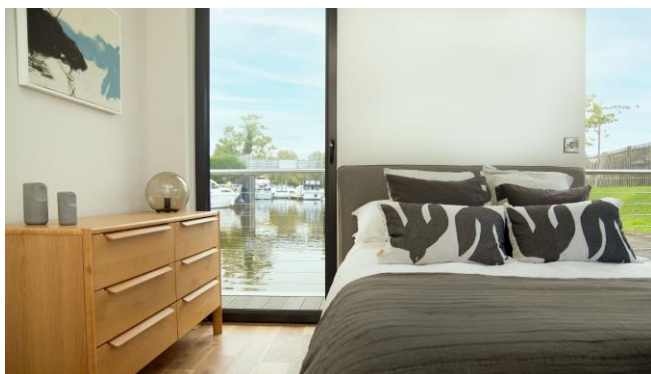
OPEN PLAN KITCHEN/LIVING/DINING ROOM

Floor to ceiling, picture windows and large sliding door to the decked balcony welcome you into this stunning space where there is an instant calming connection with the water. The kitchen is fully fitted with integrated appliances including eye-level oven, induction hob, extractor hood, fridge, freezer and dishwasher. Underslung composite sink with mixer tap and composite drainer. The living/dining area is just the spot for either relaxing or entertaining and leads straight onto the balcony.



MAIN BEDROOM

With a double aspect the spacious main suite has a useful fitted double wardrobe and access to the rear deck with stairs leading to the roof terrace.



BEDROOM TWO

The angular windows in this double bedroom frames those peaceful water views beautifully and also benefits from a fitted double wardrobe.

SHOWER ROOM

The contemporary shower room comprises of a large shower cubicle with thermostatically controlled shower. Wall hung hand basin with mixer tap and mirror with sensor integral light over. Wall hung WC with concealed cistern. To add to the finish, a chrome heated towel rack and ceramic tiled floor.

ROOF TERRACE

Accessed via external stairs.



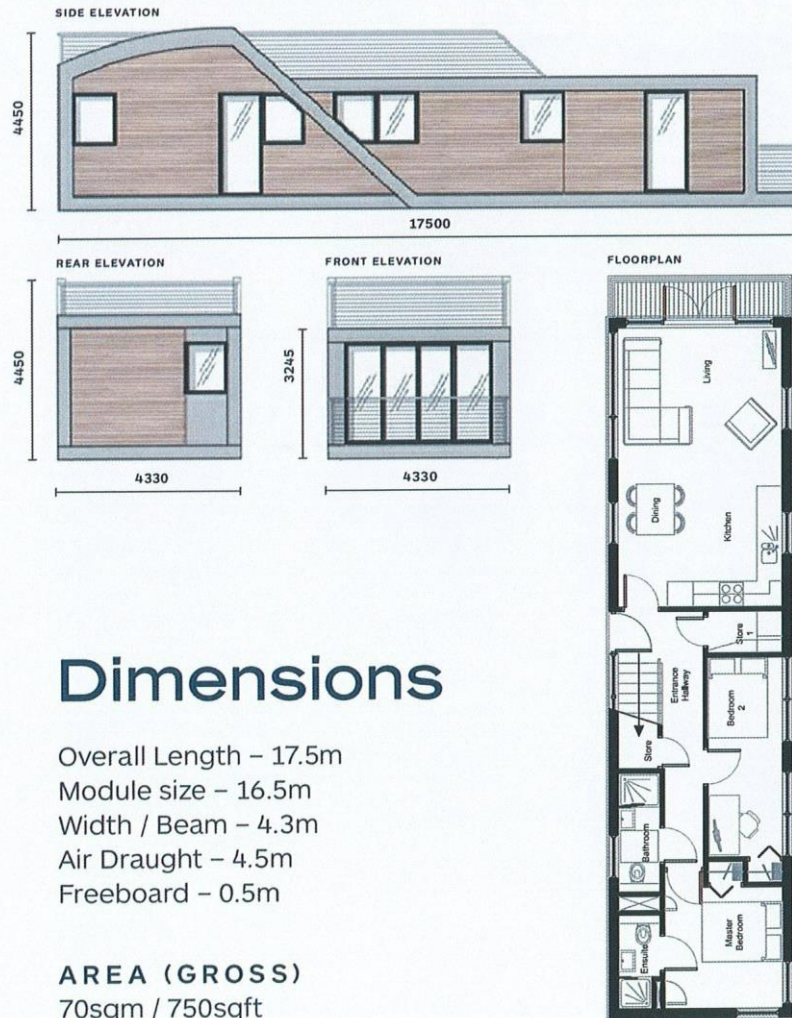
INFORMATION

The houseboat benefits from efficient LED lighting and quality solid wood flooring in all the main rooms. The heating is provided by Dimplex wall mounted heaters and contemporary chrome furniture throughout.

Please note that images are for illustrative purposes and fixtures and fittings subject to change to individual requirements.



1



Dimensions

Overall Length – 17.5m
Module size – 16.5m
Width / Beam – 4.3m
Air Draught – 4.5m
Freeboard – 0.5m

AREA (GROSS)
70sqm / 750sqft

FOR ILLUSTRATIVE PURPOSES ONLY

SUBJECT TO CHANGE DUE TO INDIVIDUAL REQUIREMENTS

BOAT INFORMATION

Floation System :
Fully enclosed concrete pontoon
Constructed to Eurocode 2 BS EN

MOORING FEE

£8,658.00 per annum.

WARRANTY

12 month defects period
60 year design life on structure
50 year design life on pontoons
10 years design life on cladding
(Subject to reasonable maintenance).

OFFICE

34 Waterfront, Brighton Marina Village,
Brighton, East Sussex, BN2 5WA

Tel: 01273 688 448
brighton@h2ohomes.co.uk
www.h2ohomes.co.uk

Agents Note: Whilst every care has been taken to prepare these sales particulars, they are for guidance purposes only. All measurements are approximate and are for general guidance purposes only and whilst every care has been taken to ensure their accuracy, they should not be relied upon and potential buyers are advised to recheck the measurements