



1 Mayfield Villas, Longparish, SP11 6PF
Price Guide £495,000



1 Mayfield Villas, Longparish, Price Guide £495,000

PROPERTY DESCRIPTION BY Mr Wayne Turpin

Positioned in the picturesque and sought after village of Longparish, Graham & Co are delighted to offer to the market this pretty extended semi-detached character cottage having accommodation over three floors. The cottage itself benefits from an entrance hall leading to the living room with newly fitted log burner, dining room, rear lobby and a newly fitted ground floor bathroom. To the first floor there are two double bedrooms and shower room with stairs leading to second floor and bedroom three. Outside a driveway runs to the side of the property leading to the double garage. Rear garden itself is a feature and set in two sections with the first formal garden having lawn, abundance of mature flower and shrub beds leading to the large second section having productive areas, fruit cages and gate leading to parkland.



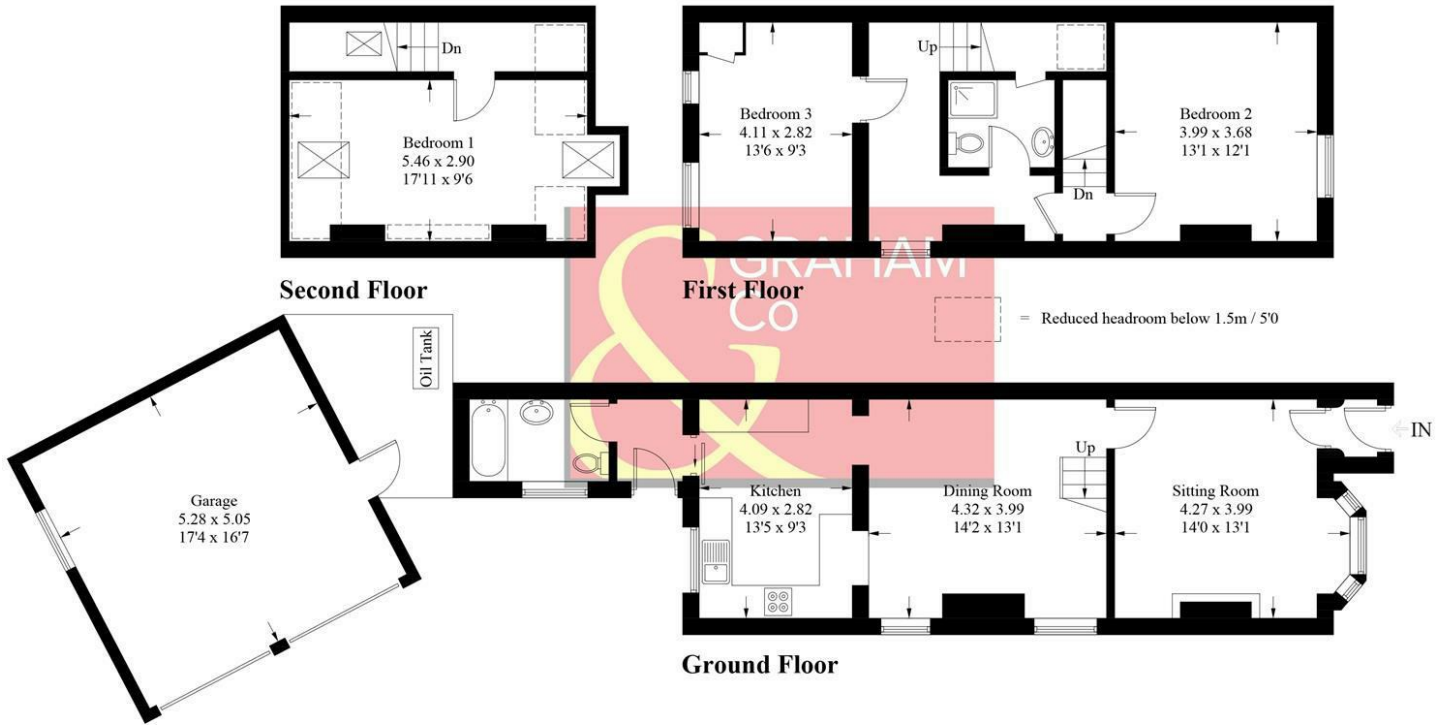


Longparish boasts a church, public house, excellent village school, post office/store whilst nearby Andover and/or Winchester offer a more comprehensive range of facilities both with theatres cinemas sports centres shopping and restaurants. The mainline railway station in nearby Andover offers a fast service to London Waterloo in just over an hour, and the village is close to the A303 which gives access to London via the M3 and the West Country.



Mayfield Villas, SP11

Approximate Gross Internal Area = 121.4 sq m / 1307 sq ft
 Garage = 26.8 sq m / 288 sq ft
 Total = 148.2 sq m / 1595 sq ft



PRODUCED FOR GRAHAM AND CO

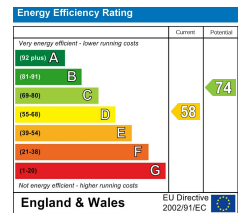
Whilst every attempt has been made to ensure the accuracy of the floorplan, measurements of doors, windows and rooms are approximate. These plans are for representation purposes only as defined by RICS Code of Measuring Practice and used as such by any prospective purchaser. © Emzo Marketing (ID683549)

MORTGAGE ADVICE Across The Market Mortgages

An independent Mortgage brokerage offering expert advice from across the whole market. Whether you are a first-time buyer, home mover, remortgaging or buying a Buy-To-Let investment. Tristan can provide expert & reliable advice, in a clear jargon free language. Book a free consultation today.

E - tristan@atmmortgages.com M - 07545320380

www.atmmortgages.com



Tax Band: E



OPEN 7 DAYS

If you are considering selling your home please contact us today for your free no obligation valuation

IMPORTANT: we would like to inform prospective purchasers that these sales particulars have been prepared as a general guide only. A detailed survey has not been carried out, nor the services, appliances and fittings tested. Room sizes should not be relied upon for furnishing purposes and are approximate. If floor plans are included, they are for guidance only and illustration purposes only and may not be to scale. If there are any important matters likely to affect your decision to buy, please contact us before viewing the property.

