



## The Sidlesham, Shopwyke Lakes, Sheerwater Way

Guide Price £595,000



# The Sidlesham, Shopwyke Lakes

Sheerwater Way, Chichester

Step into The Sidlesham and up into a life of luxury.

With the five bedrooms across the three floors, allows total flexibility for all the family, there's plenty of space for families to grown into The Sidlesham house type.

Have endless fun with the family or host fabulous dinner parties in the open plan kitchen / dining room, which opens into your own private garden and patio space. Looking for a more formal touch? Step into the ground floor lounge with the front facing bay window. Storage space and a handy wc gives this floor added, practical touches. Step up into the following two floors, where you can relax and wash off the day.

Discover and enjoy the close proximity of the lakes and green surroundings at The Sidlesham.

NB Internal Images are digitally dressed for illustrative purposes only and are NOT plot specific.

\*terms & conditions apply.

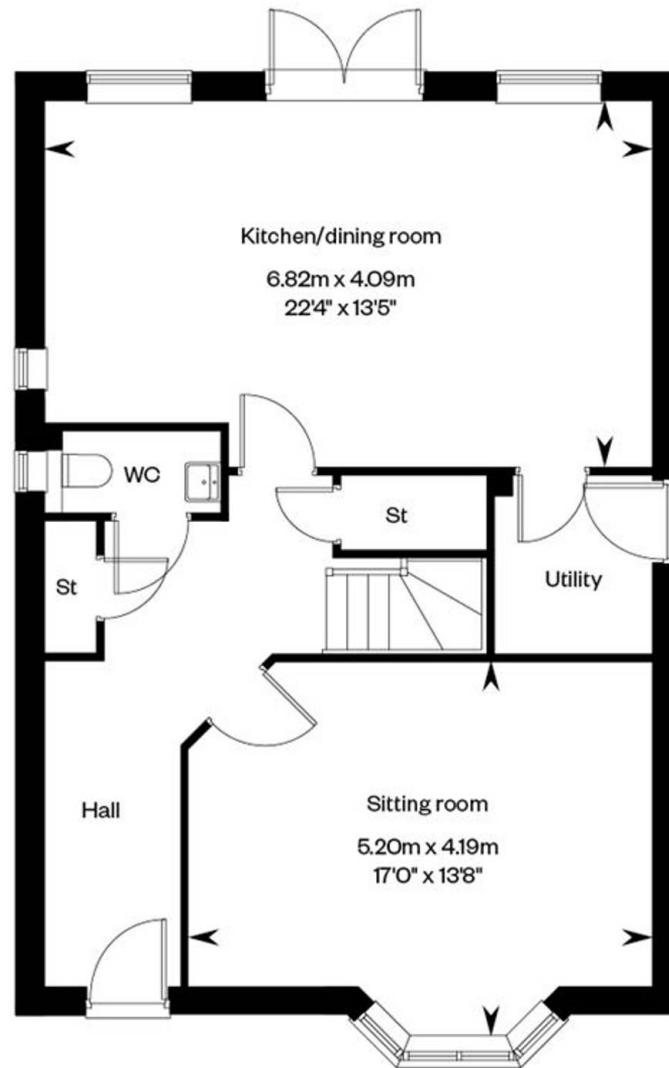
- Kitchen/Dining Room with Doors to Garden
- Cloakroom and Separate Utility Room
- First Floor Study
- Bedrooms 4 & 5 and Shower Room on 2nd Floor
- Living Room with En Suite & Dressing Room
- Bedrooms 2, 3 and Family Bathroom on First Floor
- Garage and Parking
- Appliances, Flooring & Turf Included



## The Sidlesham

Plots 192, 194 & 196 – as shown

Plots 193, 195, 203, 223, 231, 234 & 235 – handed

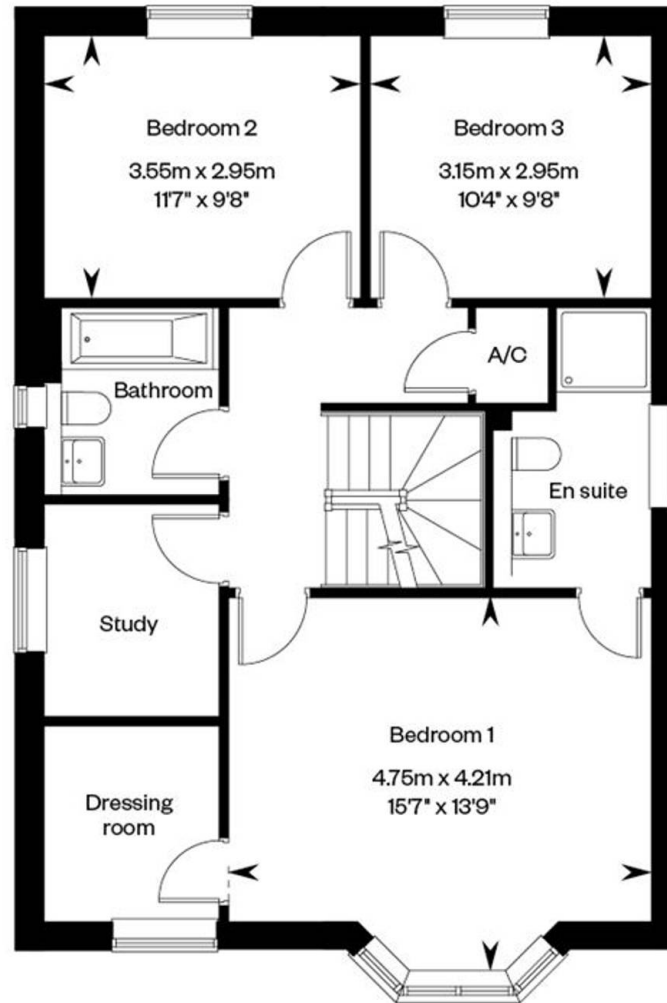


Ground floor

## The Sidlesham

Plots 192, 194 & 196 – as shown

Plots 193, 195, 203, 223, 231, 234 & 235 – handed



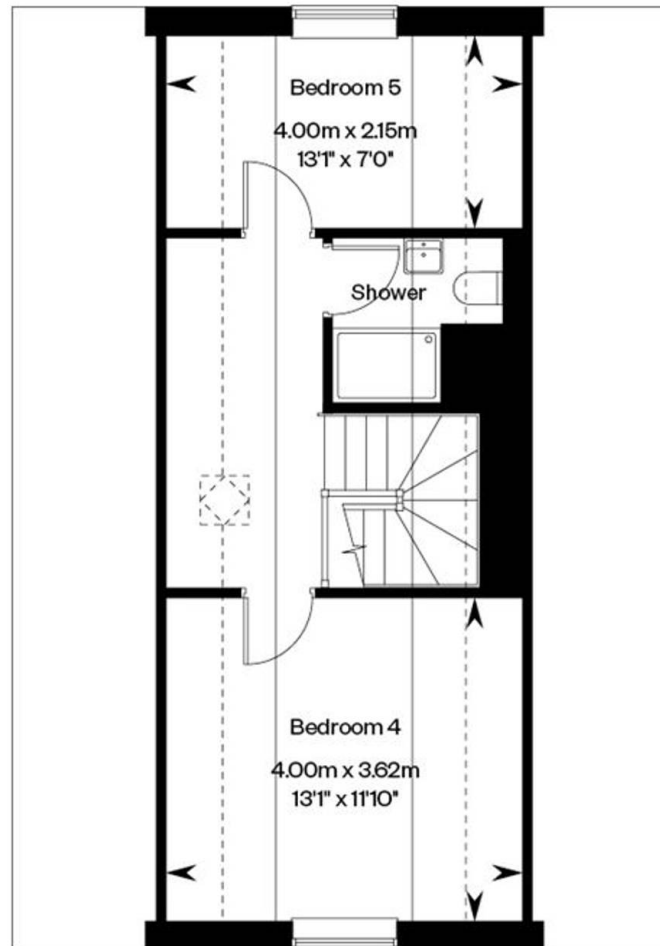
First floor



## The Sidlesham

Plots 192, 194 & 196 – as shown

Plots 193, 195, 203, 223, 231, 234 & 235 – handed



Second floor



# 03

Final homes remaining at  
Shopwyke Lakes

## Henry Adams New Homes

Henry Adams LLP, Rowan House Baffins Lane - PO19 1UA

01243 521833

[newhomes@henryadams.co.uk](mailto:newhomes@henryadams.co.uk)

[www.simpynewhomes.com](http://www.simpynewhomes.com)

Agents Note - Our particulars are for guidance only and are intended to give a fair overall summary of the property. They do not form part of any contract or offer, and should not be relied upon as a statement or representation of fact. Measurements, areas and distances are approximate only. Photographs may include lifestyle shots and pictures of local views. No undertaking is given as to the structural condition of the property, or any necessary consents or the operating ability or efficiency of any service, system or appliance. Please ask if you would like further information, especially before you travel to the property.