



## Pump House

Chapel Place, EC2, 10 Chapel Place, London, EC2A 3DQ

**Characterful office  
building for let located  
in the iconic Shoreditch  
Triangle**

**2,833 sq ft**  
(263.19 sq m)

- Top floor benefiting from vaulted ceiling and spectacular light well providing fantastic natural light throughout
- Secure communal courtyard
- Ground to second floor
- Good ceiling height

# Pump House, Chapel Place, EC2, 10 Chapel Place, London, EC2A 3DQ

## Description

10 Chapel place is situated in the sought after and vibrant Shoreditch Triangle just off Old street and accessed from Rivington street. This characterful building is home a creative community of office suites. A security guard is employed during the day to look after the estate and direct visitors.

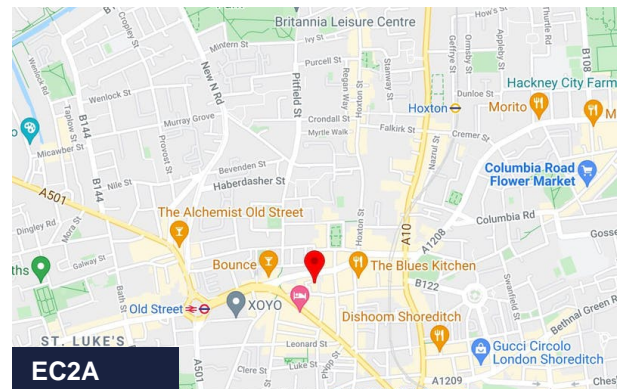
The three floors all enjoy great natural light and good ceiling height with opening windows to two aspects and the second floor also enjoys a superb, vaulted ceiling which is partially glazed and also benefits from a mezzanine level. There is current four toilets spread over the floors and accessed from the shared stair.

## Location

Chapel Place is an attractive private courtyard development accessed from Rivington Street and Old Street, within the vibrant 'Shoreditch Triangle'. This busy mixed-used area is occupied by many thriving businesses and is well served by many shops, eateries, bars and amenities.

## Specification

- Great natural light
- Vaulted ceiling
- Mezzanine on 2nd floor
- Tea-point
- Good ceiling height



## Summary

Available Size	2,833 sq ft
Rent	£39.50 per sq ft
Rates Payable	Upon Enquiry
EPC Rating	Upon Enquiry

## Viewing & Further Information



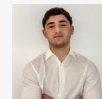
Harry Mann

0203 911 3711 | 07947728313  
hmann@stirlingackroyd.com



Harry Clowser

0203 911 3711 | 07708499262  
hclowser@stirlingackroyd.com



Joe Harris

02039113676 | 07809091305  
jharris@stirlingackroyd.com



Lucy Stephens

020 3967 0094  
lucys@stirlingackroyd.com



George Brereton









