



FOR SALE

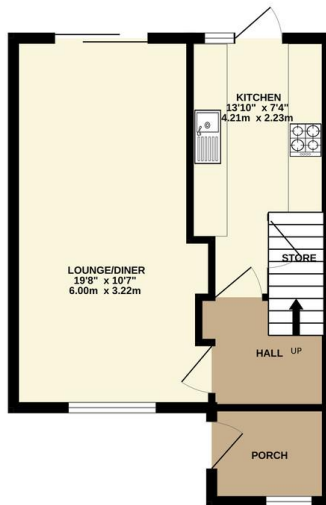
2 Bed End Terraced House in Briar Road, Thurnby Lodge LE5 2HB
£190,000

Two bedroom semi-detached home, located in the highly sought-after Thurnby Lodge area of Leicester. The property is offered to the market with no upward chain and requires some cosmetic improvements, presenting an excellent opportunity for buyers to add their own personal touch. Benefits include a larger than average landscaped rear garden, off-road parking, and well-proportioned living accommodation. Contact Phillips George today to arrange your appointment.



GROUND FLOOR
360 sq.ft. (33.4 sq.m.) approx.

1ST FLOOR
329 sq.ft. (30.6 sq.m.) approx.



TOTAL FLOOR AREA : 689 sq.ft. (64.0 sq.m.) approx.

Whilst every attempt has been made to ensure the accuracy of the floorplan contained here, measurements of doors, windows, rooms and any other items are approximate and no responsibility is taken for any error, omission or mis-statement. This plan is for illustrative purposes only and should be used as such by any prospective purchaser. The services, systems and appliances shown have not been tested and no guarantee as to their operability or efficiency can be given.
Made with Metropac ©2023

EPC Ordered.

- Two Bedroom End Town House
- Located In Popular Thurnby Lodge Area (LE5)
- Offered With No Upward Chain
- Spacious Lounge Diner With Patio Doors
- Fitted Kitchen With Pantry And Garden Access
- Larger Than Average Landscaped Rear Garden

Agents Note: Whilst every care has been taken to prepare these sales particulars, they are for guidance purposes only. All measurements are approximate are for general guidance purposes only and whilst every care has been taken to ensure their accuracy, they should not be relied upon and potential buyers are advised to recheck the measurements.

