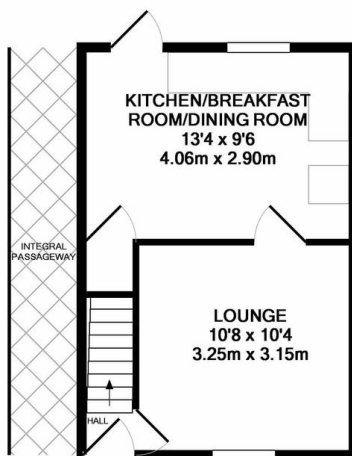




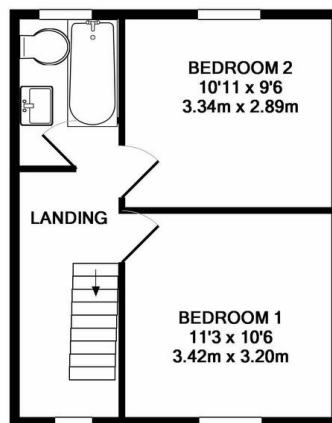
TO LET

2 Bed Mid Terraced House in Chapel Street, Barwell LE9 8DE
£700 pcm

Attractive, two bedroom mid terraced property in good condition available to let in the heart of Barwell. The property comprises porch, living room, kitchen diner, landing, two double bedrooms and bathroom, with a spacious garden to the rear. Offered unfurnished, the property is fully double glazed and centrally heated and comes with on road parking to the front. An excellent property for a professional or working couple. Sorry no pets will be considered for this property.



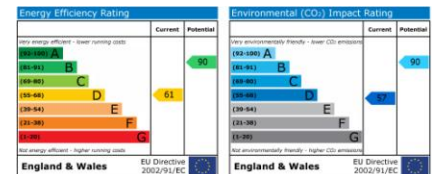
GROUND FLOOR
APPROX. FLOOR
AREA 265 SQ.FT.
(24.6 SQ.M.)



1ST FLOOR
APPROX. FLOOR
AREA 314 SQ.FT.
(29.1 SQ.M.)

FLOOR PLAN BY PHILLIPS GEORGE
TOTAL APPROX. FLOOR AREA 579 SQ.FT. (53.8 SQ.M.)

Whilst every attempt has been made to ensure the accuracy of the floor plan contained here, measurements of doors, windows, rooms and any other items are approximate and no responsibility is taken for any error, omission, or mis-statement. This plan is for illustrative purposes only and should be used as such by any prospective purchaser. The services, systems and appliances shown have not been tested and no guarantee as to their operability or efficiency can be given
Made with Metropix ©2018



- Mid Terraced Property
- Village Centre Location
- Two Bedrooms
- Living Room
- Kitchen / Diner
- Bathroom Upstairs
- Double Glazed Throughout
- Well Presented Throughout

Agents Note: Whilst every care has been taken to prepare these sales particulars, they are for guidance purposes only. All measurements are approximate and for general guidance purposes only and whilst every care has been taken to ensure their accuracy, they should not be relied upon and potential buyers are advised to recheck the measurements.

