



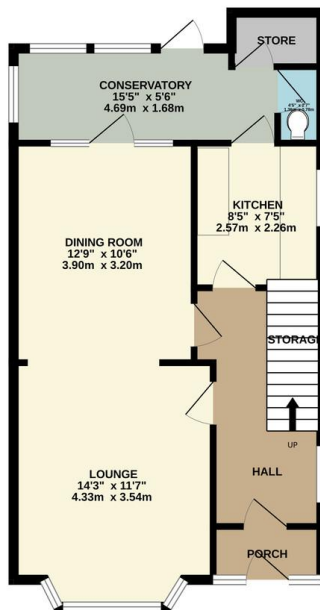
FOR SALE

3 Bed Semi-Detached House in Fairholme Road, West Knighton LE2 6GL
£290,000

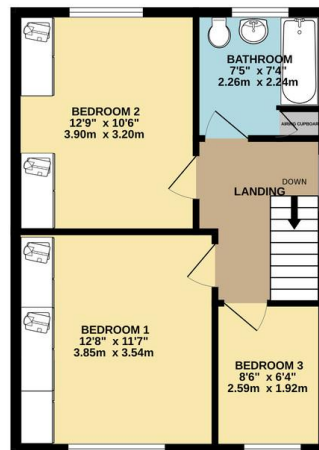
A neatly presented, chain-free three-bedroom semi-detached home in the sought-after area of West Knighton, set on a generous landscaped plot. Features include a bright conservatory, ample off-road parking and a detached garage. Contact Phillips George to arrange your viewing.



GROUND FLOOR
577 sq.ft. (53.6 sq.m.) approx.



1ST FLOOR
456 sq.ft. (42.4 sq.m.) approx.



TOTAL FLOOR AREA: 1033 sq.ft. (96.0 sq.m.) approx.
Whilst every effort has been made to ensure the accuracy of the floorplan contained here, measurements of doors, windows, rooms and any other items are approximate and no responsibility is taken for any error, omission or misstatement. This plan is for illustrative purposes only and should be used as such for any prospective purchaser. The services, systems and appliances shown have not been tested and no guarantee as to their operability or efficiency can be given.
Made with Metropix C2025

EPC Ordered

- Semi Detached
- Three Bedrooms
- Highly Popular Location
- No Upward Chain
- West Knighton
- Large Gardens
- Off Road Parking
- Detached Garage

Agents Note: Whilst every care has been taken to prepare these sales particulars, they are for guidance purposes only. All measurements are approximate are for general guidance purposes only and whilst every care has been taken to ensure their accuracy, they should not be relied upon and potential buyers are advised to recheck the measurements.

