



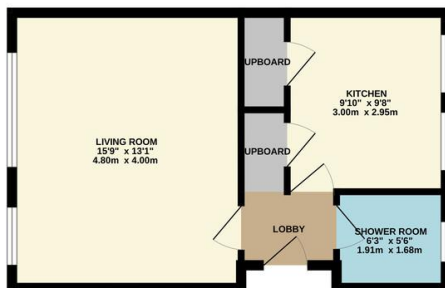
TO LET

3 Bed Semi-Detached House in Upton Drive, Wigston LE18 3WP
£1,100 pcm

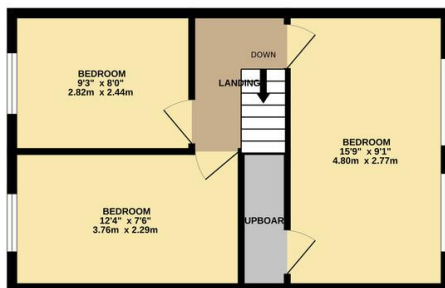
Recently renovated three bedroom semi-detached property on Upton Drive available to let. Redecorated throughout to include new paintwork and carpets, the property is in excellent condition and comprises lobby, kitchen, spacious living room and shower room on the ground floor, together with three bedrooms upstairs. The property also benefits from off road parking, garage and pleasant private garden to the rear. An excellent family home.



GROUND FLOOR
384 sq.ft. (35.7 sq.m.) approx.

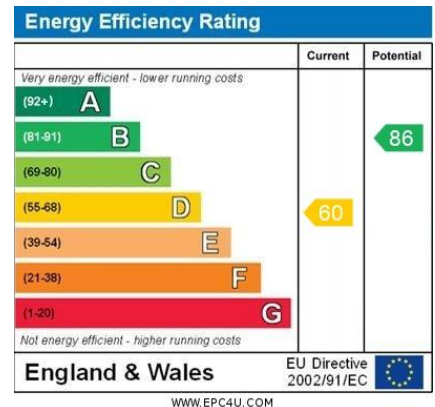


1ST FLOOR
391 sq.ft. (36.3 sq.m.) approx.



TOTAL FLOOR AREA : 775 sq.ft. (72.0 sq.m.) approx.
Whilst every attempt has been made to ensure the accuracy of the floorplan contained here, measurements of doors, windows, rooms and any other items are approximate and no responsibility is taken for any error, omission or mis-statement. This plan is for illustrative purposes only and should be used as such by any prospective purchaser. The services, systems and appliances shown have not been tested and no guarantee as to their operability or efficiency can be given.
Made with Metrepx ©2025

Agents Note: Whilst every care has been taken to prepare these sales particulars, they are for guidance purposes only. All measurements are approximate are for general guidance purposes only and whilst every care has been taken to ensure their accuracy, they should not be relied upon and potential buyers are advised to recheck the measurements.



- Semi Detached Home
- Three Bedrooms
- Recently Redecorated Throughout
- Spacious Living Room
- New Carpets Throughout
- Shower Room Downstairs
- Immaculate Condition
- Garage

