



FOR SALE

5 Bed Semi-Detached House in Neston Gardens, Leicester LE2 6RF
£230,000

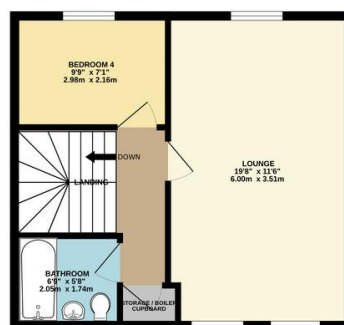
Located in a popular estate, this imposing five bedroom semi detached home offers versatile living across three storeys, ideal for a larger family. The property boasts a generous kitchen/diner, a spacious lounge, landscaped gardens, and a convenient ground floor W.C. With flexible accommodation to suit a range of lifestyles, this home is offered chain free. Contact Phillips George to arrange your viewing today.



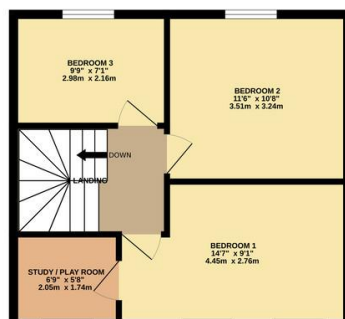
GROUND FLOOR
419 sq.ft. (39.0 sq.m.) approx.



1ST FLOOR
419 sq.ft. (39.0 sq.m.) approx.

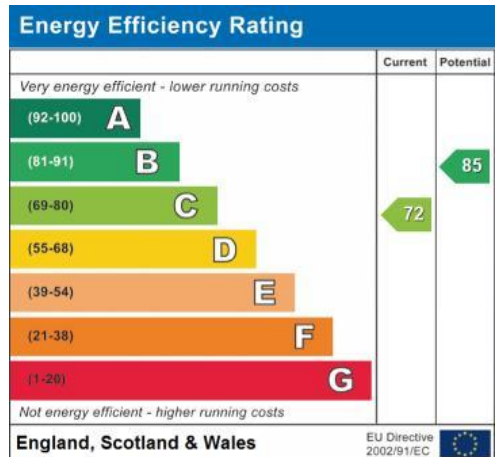


2ND FLOOR
419 sq.ft. (39.0 sq.m.) approx.



TOTAL FLOOR AREA: 1258 sq.ft. (116.9 sq.m.) approx.

Whilst every attempt has been made to ensure the accuracy of the floorplan contained here, measurements of doors, windows, rooms and any other items are approximate and no responsibility is taken for any error.



- Semi Detached
- Five Bedrooms
- Three Storey
- Ground Floor W.C
- Popular Location
- Multi Versatile Accommodation
- Cul De Sac
- No Upward Chain

Agents Note: Whilst every care has been taken to prepare these sales particulars, they are for guidance purposes only. All measurements are approximate are for general guidance purposes only and whilst every care has been taken to ensure their accuracy, they should not be relied upon and potential buyers are advised to recheck the measurements.

