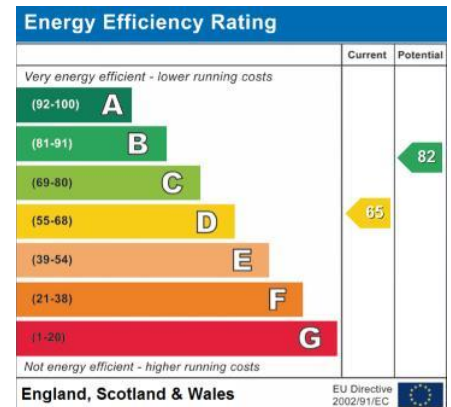
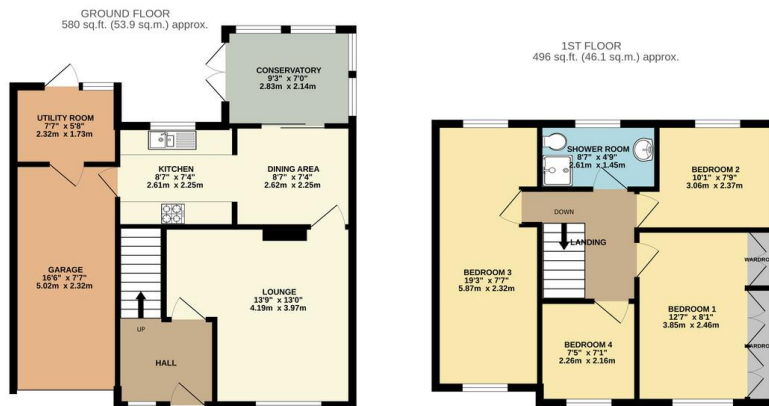




## FOR SALE

4 Bed Semi-Detached House in Skelton Drive, Leicester LE2 6JP  
£310,000

Located in the ever popular estate of West Knighton this extended four bedroom family home offers spacious living with a stunning conservatory, modern kitchen diner, and beautifully landscaped gardens. Complete with off road parking and a garage, it is perfect for family life. Contact Phillips George to arrange your viewing today.



- Extended Semi Detached
- Four Bedrooms
- Immaculate Presentation
- Kitchen / Diner
- Conservatory
- Utility Room
- Landscaped Gardens
- Off Road Parking

**Agents Note:** Whilst every care has been taken to prepare these sales particulars, they are for guidance purposes only. All measurements are approximate are for general guidance purposes only and whilst every care has been taken to ensure their accuracy, they should not be relied upon and potential buyers are advised to recheck the measurements.

